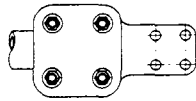


# POWER CONNECTORS

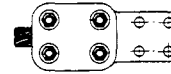
## TERMINAL LUGS PICTORIAL INDEX

### SECTION Be

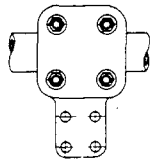
Be-Terminal



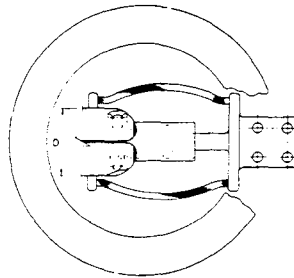
Type ETF, ETF-45, ETF-90 – Page Be-1



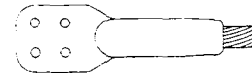
Type ECF, ECF-45, ECF-90 – Page Be-2



Type ETMF – Page Be-4



Type ETLF – Page Be-3



ECFC, ECFC-15, ECFC-45,  
ECFC-90 – Page Be-5-6

**ROYAL SWITCHGEAR MANUFACTURING CO.**

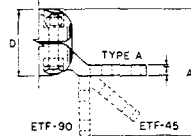
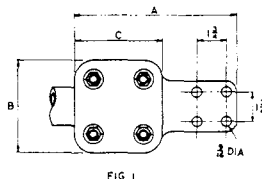
3995 Pine Lane SE • Bessemer, AL 35023 • (205) 426-4090 • FAX (205) 426-4095

# POWER CONNECTORS **Be-1**

## TERMINAL LUG TYPES ETF ETF-45 ETF-90

Be-Terminal

### TYPE ETF



| CAT. NO. | CONDUCTOR SIZE |           | FIG. NO. | DIMENSIONS (INCHES) |       |       |       |       | BOLT SIZE |
|----------|----------------|-----------|----------|---------------------|-------|-------|-------|-------|-----------|
|          | IPS RUN        | PAD       |          | A                   | B     | C     | D     | T     |           |
| 90212    | 2              | 3 x 3-1/4 | 1        | 8                   | 5-1/8 | 3-3/4 | 4     | 5/8   | 1/2       |
| 90213    | 2              | 4 x 4-1/4 | J        | 9                   | 5-1/8 | 3-3/4 | 4     | 1/2   | 1/2       |
| 90214    | 2-1/2          | 3 x 3-1/4 | 1        | 8-1/2               | 6     | 4-1/4 | 4-5/8 | 7/8   | 5/8       |
| 90215    | 2-1/2          | 4 x 4-1/4 | 1        | 9-1/2               | 6     | 4-1/4 | 4-5/8 | 5/8   | 5/8       |
| 90216    | 3              | 3 x 3-1/4 | 1        | 8-1/2               | 6-5/8 | 4-1/4 | 4-7/8 | 1     | 5/8       |
| 90217    | 3              | 4 x 4-1/4 | 1        | 9-1/2               | 6-5/8 | 4-1/4 | 4-7/8 | 3/4   | 5/8       |
| 90218    | 3-1/2          | 3 x 3-1/4 | 1        | 9                   | 7-1/8 | 4-3/4 | 5-3/8 | 1-1/4 | 5/8       |
| 90219    | 3-1/2          | 4 x 4-1/4 | 1        | 10                  | 7-1/8 | 4-3/4 | 5-3/8 | 7/8   | 5/8       |
| 90220    | 4              | 3 x 3-1/4 | 1        | 9                   | 7-5/8 | 4-3/4 | 6     | 1-1/4 | 5/8       |
| 90221    | 4              | 4 x 4-1/4 | 1        | 10                  | 7-5/8 | 4-3/4 | 6     | 1     | 5/8       |
| 90223    | 5              | 4 x 4-1/4 | 2        | 11                  | 8-3/4 | 5-3/4 | 7-1/8 | 1-1/4 | 5/8       |
| 90225    | 6              | 4 x 4-1/4 | 2        | 11-1/2              | 9-3/4 | 6-1/4 | 8-1/2 | 1-1/2 | 5/8       |

### TYPE ETF-45

|       |       |           |   |   |       |       |       |       |     |
|-------|-------|-----------|---|---|-------|-------|-------|-------|-----|
| 90226 | 2     | 3 x 3-1/4 | 1 | - | 5-1/8 | 3-3/4 | 4     | 5/8   | 1/2 |
| 90227 | 2     | 4 x 4-1/4 | 1 | - | 5-1/8 | 3-3/4 | 4     | 1/2   | 1/2 |
| 90228 | 2-1/2 | 3 x 3-1/4 | 1 | - | 6     | 4-1/4 | 4-5/8 | 7/8   | 5/8 |
| 90229 | 2-1/2 | 4 x 4-1/4 | 1 | - | 6     | 4-1/4 | 4-5/8 | 5/8   | 5/8 |
| 90230 | 3     | 3 x 3-1/4 | 1 | - | 6-5/8 | 4-1/4 | 4-7/8 | 1     | 5/8 |
| 90231 | 3     | 4 x 4-1/4 | 1 | - | 6-5/8 | 4-1/4 | 4-7/8 | 3/4   | 5/8 |
| 90232 | 3-1/2 | 3 x 3-1/4 | 1 | - | 7-1/8 | 4-3/4 | 5-3/8 | 1-1/4 | 5/8 |
| 90233 | 3-1/2 | 4 x 4-1/4 | 1 | - | 7-1/8 | 4-3/4 | 5-3/8 | 7/8   | 5/8 |
| 90234 | 4     | 3 x 3-1/4 | 1 | - | 7-5/8 | 4-3/4 | 6     | 1-1/4 | 5/8 |
| 90235 | 4     | 4 x 4-1/4 | 1 | - | 7-5/8 | 4-3/4 | 6     | 1     | 5/8 |
| 90237 | 5     | 4 x 4-1/4 | 2 | - | 8-3/4 | 5-3/4 | 7-1/8 | 1-1/4 | 5/8 |
| 90239 | 6     | 4 x 4-1/4 | 2 | - | 9-3/4 | 6-1/4 | 8-1/2 | 1-1/2 | 5/8 |

### TYPE ETF-90

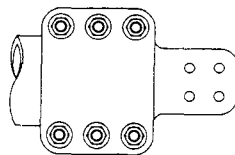
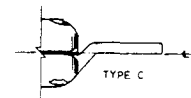


FIG 2



|       |       |           |   |        |       |       |       |       |     |
|-------|-------|-----------|---|--------|-------|-------|-------|-------|-----|
| 90240 | 2     | 3 x 3-1/4 | 1 | 7-1/2  | 5-1/8 | 3-3/4 | 4     | 5/8   | 1/2 |
| 90241 | 2     | 4 x 4-1/4 | 1 | 8-1/2  | 5-1/8 | 3-3/4 | 4     | 1/2   | 1/2 |
| 90242 | 2-1/2 | 3 x 3-1/4 | 1 | 8-1/8  | 6     | 4-1/4 | 4-5/8 | 7/8   | 5/8 |
| 90243 | 2-1/2 | 4 x 4-1/4 | 1 | 9-1/8  | 6     | 4-1/4 | 4-5/8 | 5/8   | 5/8 |
| 90244 | 3     | 3 x 3-1/4 | 1 | 8-3/8  | 6-5/8 | 4-1/4 | 4-7/8 | 1     | 5/8 |
| 90245 | 3     | 4 x 4-1/4 | 1 | 9-3/8  | 6-5/8 | 4-1/4 | 4-7/8 | 3/4   | 5/8 |
| 90246 | 3-1/2 | 3 x 3-1/4 | 1 | 8-7/8  | 7-1/8 | 4-3/4 | 5-3/8 | 1-1/4 | 5/8 |
| 90247 | 3-1/2 | 4 x 4-1/4 | 1 | 9-7/8  | 7-1/8 | 4-3/4 | 5-3/8 | 7/8   | 5/8 |
| 90248 | 4     | 3 x 3-1/4 | 1 | 9-1/2  | 7-5/8 | 4-3/4 | 6     | 1-1/4 | 5/8 |
| 90249 | 4     | 4 x 4-1/4 | 1 | 10-1/2 | 7-5/8 | 4-3/4 | 6     | 1     | 5/8 |
| 90251 | 5     | 4 x 4-1/4 | 2 | 11-5/8 | 8-3/4 | 5-3/4 | 7-1/8 | 1-1/4 | 5/8 |
| 90253 | 6     | 4 x 4-1/4 | 2 | 13     | 9-3/4 | 6-1/4 | 8-1/2 | 1-1/2 | 5/8 |

**Example for Ordering:** No. 90215 Royal Type ETF terminal lug for 2-1/2" IPS aluminum to 4 x 4-1/4 NEMA pad (Type A).

Customer to specify Type A, C pad. If not specified, Type "A" will be furnished.

**NOTE:** For Bolt Shields to be used on pad see Sec. He Page He-1 Type ACS.

## ROYAL SWITCHGEAR MANUFACTURING CO.

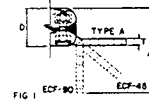
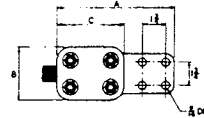
3995 Pine Lane SE • Bessemer, AL 35023 • (205) 426-4090 • FAX (205) 426-4095

# Be-2 POWER CONNECTORS

## TERMINAL LUG TYPES ECF, ECF-45, ECF-90

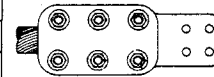
### TYPE ECF

| CAT. NO. | CONDUCTOR SIZE (MCM) |               |           | FIG. NO. | DIMENSIONS (INCHES) |       |       |       |       | BOLT SIZE |
|----------|----------------------|---------------|-----------|----------|---------------------|-------|-------|-------|-------|-----------|
|          | AL                   | ACSR          | PAD       |          | A                   | B     | C     | D     | T     |           |
| 90254    | 715.5-1033.5         | 636 - 954     | 3 x 3-1/4 | 1        | 8-1/4               | 4     | 4     | 2-7/8 | 7/16  | 1/2       |
| 90255    | 715.5-1033.5         | 636 - 954     | 4 x 4-1/4 | 1        | 9-1/4               | 4     | 4     | 2-7/8 | 3/8   | 1/2       |
| 90256    | 954-1431             | 795 -1272     | 3 x 3-1/4 | 1        | 8-1/2               | 4-1/4 | 4-1/4 | 3     | 1/2   | 1/2       |
| 90257    | 954-1431             | 795 -1272     | 4 x 4-1/4 | 1        | 9-1/2               | 4-1/4 | 4-1/4 | 3     | 3/8   | 1/2       |
| 90258    | 1272-1750            | 1113 -1590    | 3 x 3-1/4 | 1        | 8-3/4               | 4-3/8 | 4-1/2 | 3-1/4 | 9/16  | 1/2       |
| 90259    | 1272-1750            | 1113 -1590    | 4 x 4-1/4 | 1        | 9-3/4               | 4-3/8 | 4-1/2 | 3-1/4 | 7/16  | 1/2       |
| 90260    | 1530-2000            | 1,453"-1,630" | 3 x 3-1/4 | 1        | 9-1/4               | 4-7/8 | 5     | 3-3/4 | 9/16  | 5/8       |
| 90261    | 1530-2000            | 1,453"-1,630" | 4 x 4-1/4 | 1        | 10-1/4              | 4-7/8 | 5     | 3-3/4 | 7/16  | 5/8       |
| 90262    | 2000-2500            | 1,630"-1,823" | 3 x 3-1/4 | 1        | 9-1/2               | 5     | 5-1/4 | 4     | 5/8   | 5/8       |
| 90263    | 2000-2500            | 1,630"-1,823" | 4 x 4-1/4 | 1        | 10-1/2              | 5     | 5-1/4 | 4     | 1/2   | 5/8       |
| 90264    | 2500-3000            | 1,823"-1,998" | 3 x 3-1/4 | 1        | 9-3/4               | 5-1/8 | 5-1/2 | 4-1/4 | 11/16 | 5/8       |
| 90265    | 2500-3000            | 1,823"-1,998" | 4 x 4-1/4 | 1        | 10-3/4              | 5-1/8 | 5-1/2 | 4-1/4 | 1/2   | 5/8       |
| 90266    | 3000-3500            | 1,998"-2,158" | 3 x 3-1/4 | 2        | 10-1/4              | 5-3/8 | 6     | 4-1/2 | 11/16 | 5/8       |
| 90267    | 3000-3500            | 1,998"-2,158" | 4 x 4-1/4 | 2        | 11-1/4              | 5-3/8 | 6     | 4-1/2 | 1/2   | 5/8       |



### TYPE ECF-45

|       |              |               |           |   |   |       |       |       |       |     |
|-------|--------------|---------------|-----------|---|---|-------|-------|-------|-------|-----|
| 90268 | 715.5-1033.5 | 636 - 954     | 3 x 3-1/4 | 1 | - | 4     | 4     | 2-7/8 | 7/16  | 1/2 |
| 90269 | 715.5-1033.5 | 636 - 954     | 4 x 4-1/4 | 1 | - | 4     | 4     | 2-7/8 | 3/8   | 1/2 |
| 90270 | 954-1431     | 795 -1272     | 3 x 3-1/4 | 1 | - | 4-1/4 | 4-1/4 | 3     | 1/2   | 1/2 |
| 90271 | 954-1431     | 795 -1272     | 4 x 4-1/4 | 1 | - | 4-1/4 | 4-1/4 | 3     | 3/8   | 1/2 |
| 90272 | 1272-1750    | 1113 -1590    | 3 x 3-1/4 | 1 | - | 4-3/8 | 4-1/2 | 3-1/4 | 9/16  | 1/2 |
| 90273 | 1272-1750    | 1113 -1590    | 4 x 4-1/4 | 1 | - | 4-3/8 | 4-1/2 | 3-1/4 | 7/16  | 1/2 |
| 90274 | 1590-2000    | 1,453"-1,630" | 3 x 3-1/4 | 1 | - | 4-7/8 | 5     | 3-3/4 | 9/16  | 5/8 |
| 90275 | 1590-2000    | 1,453"-1,630" | 4 x 4-1/4 | 1 | - | 4-7/8 | 5     | 3-3/4 | 7/16  | 5/8 |
| 90276 | 2000-2500    | 1,630"-1,823" | 3 x 3-1/4 | 1 | - | 5     | 5-1/4 | 4     | 5/8   | 5/8 |
| 90277 | 2000-2500    | 1,630"-1,823" | 4 x 4-1/4 | 1 | - | 5     | 5-1/4 | 4     | 1/2   | 5/8 |
| 90278 | 2500-3000    | 1,823"-1,998" | 3 x 3-1/4 | 1 | - | 5-1/8 | 5-1/2 | 4-1/4 | 11/16 | 5/8 |
| 90279 | 2500-3000    | 1,823"-1,998" | 4 x 4-1/4 | 1 | - | 5-1/8 | 5-1/2 | 4-1/4 | 1/2   | 5/8 |
| 90280 | 3000-3500    | 1,998"-2,158" | 3 x 3-1/4 | 2 | - | 5-3/8 | 6     | 4-1/2 | 11/16 | 5/8 |
| 90281 | 3000-3500    | 1,998"-2,158" | 4 x 4-1/4 | 2 | - | 5-3/8 | 6     | 4-1/2 | 1/2   | 5/8 |



### TYPE ECF-90

|       |              |               |           |   |       |       |       |       |       |     |
|-------|--------------|---------------|-----------|---|-------|-------|-------|-------|-------|-----|
| 90282 | 715.5-1033.5 | 636 - 954     | 3 x 3-1/4 | 1 | 6-3/8 | 4     | 4     | 2-7/8 | 7/16  | 1/2 |
| 90283 | 715.5-1033.5 | 636 - 954     | 4 x 4-1/4 | 1 | 7-3/8 | 4     | 4     | 2-7/8 | 3/8   | 1/2 |
| 90284 | 954-1431     | 795 -1272     | 3 x 3-1/4 | 1 | 6-1/2 | 4-1/4 | 4-1/4 | 3     | 1/2   | 1/2 |
| 90285 | 954-1431     | 795 -1272     | 4 x 4-1/4 | 1 | 7-1/2 | 4-1/4 | 4-1/4 | 3     | 3/8   | 1/2 |
| 90286 | 1272-1750    | 1113 -1590    | 3 x 3-1/4 | 1 | 6-3/4 | 4-3/8 | 4-1/2 | 3-1/4 | 9/16  | 1/2 |
| 90287 | 1272-1750    | 1113 -1590    | 4 x 4-1/4 | 1 | 7-3/4 | 4-3/8 | 4-1/2 | 3-1/4 | 7/16  | 1/2 |
| 90288 | 1590-2000    | 1,453"-1,630" | 3 x 3-1/4 | 1 | 7-1/4 | 4-7/8 | 5     | 3-3/4 | 9/16  | 5/8 |
| 90289 | 1590-2000    | 1,453"-1,630" | 4 x 4-1/4 | 1 | 8-1/4 | 4-7/8 | 5     | 3-3/4 | 7/16  | 5/8 |
| 90290 | 2000-2500    | 1,630"-1,823" | 3 x 3-1/4 | 1 | 7-1/2 | 5     | 5-1/4 | 4     | 5/8   | 5/8 |
| 90291 | 2000-2500    | 1,630"-1,823" | 4 x 4-1/4 | 1 | 8-1/2 | 5     | 5-1/4 | 4     | 1/2   | 5/8 |
| 90292 | 2500-3000    | 1,823"-1,998" | 3 x 3-1/4 | 1 | 7-3/4 | 5-1/8 | 5-1/2 | 4-1/4 | 11/16 | 5/8 |
| 90293 | 2500-3000    | 1,823"-1,998" | 4 x 4-1/4 | 1 | 8-3/4 | 5-1/8 | 5-1/2 | 4-1/4 | 1/2   | 5/8 |
| 90294 | 3000-3500    | 1,998"-2,158" | 3 x 3-1/4 | 2 | 8     | 5-3/8 | 6     | 4-1/2 | 11/16 | 5/8 |
| 90295 | 3000-3500    | 1,998"-2,158" | 4 x 4-1/4 | 2 | 9     | 5-3/8 | 6     | 4-1/2 | 1/2   | 5/8 |

Example for Ordering: No. 90258 Royal Type ECF terminal lug for 1113-1590 MCM ACSR to 3 x 3-1/4 NEMA pad (Type A).

Customer to specify Type A, or C pad. If not specified, Type "A" will be furnished.

NOTE: For Bolt Shields to be used on pad see Sec. He Page He-1 Type ACS.

### CABLE DIA. EQUIVALENTS

| MCM          | Inches      |
|--------------|-------------|
| 715.5-1033.5 | .974-1.196  |
| 954-1431     | 1.126-1.382 |
| 1272-1750    | 1.297-1.545 |

## ROYAL SWITCHGEAR MANUFACTURING CO.

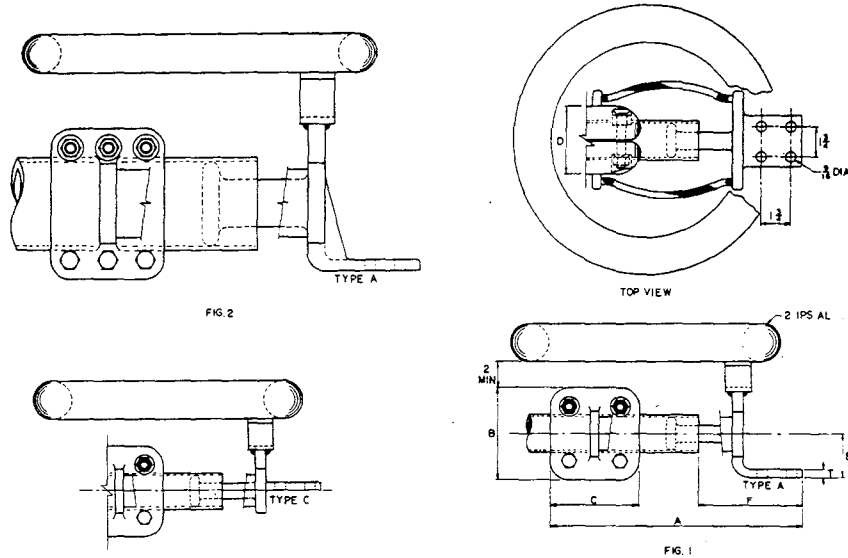
3995 Pine Lane SE • Bessemer, AL 35023 • (205) 426-4090 • FAX (205) 426-4095

# POWER CONNECTORS **Be-3**

## EXPANSION TERMINAL

### TYPE ETLF

Be-Terminal



| CAT. NO. | CONDUCTOR SIZE |           | FIG. NO. | DIMENSIONS (INCHES) |       |       |       |         |       |       |     | BOLT SIZE |
|----------|----------------|-----------|----------|---------------------|-------|-------|-------|---------|-------|-------|-----|-----------|
|          | IPS RUN        | PAD       |          | A                   | B     | C     | D     | E       | F     | T     |     |           |
| 90296    | 2              | 3 x 3-1/4 | 1        | 14-3/8              | 5-1/8 | 3-3/4 | 4     | 1-7/16  | 6-1/2 | 5/8   | 1/2 |           |
| 90297    | 2              | 4 x 4-1/4 | 1        | 15-3/8              | 5-1/8 | 3-3/4 | 4     | 1-7/16  | 7-1/2 | 1/2   | 1/2 |           |
| 90298    | 2-1/2          | 3 x 3-1/4 | 1        | 14-5/8              | 6     | 4-1/4 | 4-5/8 | 1-11/16 | 6-1/2 | 7/8   | 5/8 |           |
| 90299    | 2-1/2          | 4 x 4-1/4 | 1        | 15-5/8              | 6     | 4-1/4 | 4-5/8 | 1-11/16 | 7-1/2 | 5/8   | 5/8 |           |
| 90300    | 3              | 3 x 3-1/4 | 1        | 15-5/8              | 6-5/8 | 4-1/4 | 4-7/8 | 2       | 7     | 1     | 5/8 |           |
| 90301    | 3              | 4 x 4-1/4 | 1        | 16-5/8              | 6-5/8 | 4-1/4 | 4-7/8 | 2       | 8     | 3/4   | 5/8 |           |
| 90302    | 3-1/2          | 3 x 3-1/4 | 1        | 15-7/8              | 7-1/8 | 4-3/4 | 5-3/8 | 2-1/4   | 7     | 1-1/4 | 5/8 |           |
| 90303    | 3-1/2          | 4 x 4-1/4 | 1        | 16-7/8              | 7-1/8 | 4-3/4 | 5-3/8 | 2-1/4   | 8     | 7/8   | 5/8 |           |
| 90304    | 4              | 3 x 3-1/4 | 1        | 16-7/8              | 7-5/8 | 4-3/4 | 6     | 2-1/2   | 7-1/2 | 1-1/4 | 5/8 |           |
| 90305    | 4              | 4 x 4-1/4 | 1        | 17-7/8              | 7-5/8 | 4-3/4 | 6     | 2-1/2   | 8-1/2 | 1     | 5/8 |           |
| 90307    | 5              | 4 x 4-1/4 | 2        | 18-3/8              | 8-3/4 | 5-3/4 | 7-1/8 | 3-1/16  | 8-1/2 | 1-1/4 | 5/8 |           |
| 90309    | 6              | 4 x 4-1/4 | 2        | 18-5/8              | 9-3/4 | 6-1/4 | 8-1/2 | 3-9/16  | 8-1/2 | 1-1/2 | 5/8 |           |

Example for Ordering: No. 90297 Royal Type ETLF corona-free expansion terminal lug, for 2" IPS aluminum pipe to 4 x 4-1/4" NEMA pad (Type A).

#### NOTE:

- For operation above 500kv, special 4" IPS aluminum-tubing corona rings must be used. Add suffix -XV to catalog number.
- Customer to specify Type A, or C pad. If not specified, Type "A" will be furnished.
- Dimensions A & F are mean dimensions for installation purposes.
- Add suffix - EH for extra heavy pipe.
- For Bolt Shield to be used on pad see Sec. He Page He-1 Type ACS.

## ROYAL SWITCHGEAR MANUFACTURING CO.

3995 Pine Lane SE • Bessemer, AL 35023 • (205) 426-4090 • FAX (205) 426-4095

# Be-4 POWER CONNECTORS

## BAR CONNECTOR

### TYPE ETMF

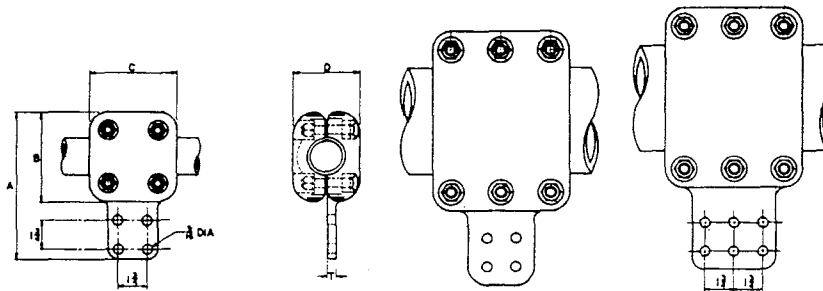


FIG. 1

FIG. 2

FIG. 3

| CAT. NO. | CONDUCTOR SIZE |           | FIG. NO. | DIMENSIONS (INCHES) |       |       |       |       |     | BOLT SIZE |
|----------|----------------|-----------|----------|---------------------|-------|-------|-------|-------|-----|-----------|
|          | IPS RUN        | PAD       |          | A                   | B     | C     | D     | T     |     |           |
| 90310    | 2              | 3 x 3-1/4 | 1        | 8-5/8               | 5-1/8 | 3-3/4 | 4     | 5/8   | 1/2 |           |
| 90311    | 2              | 4 x 4-1/4 | 1        | 9-5/8               | 5-1/8 | 3-3/4 | 4     | 1/2   | 1/2 |           |
| 90312    | 2-1/2          | 3 x 3-1/4 | 1        | 9-1/2               | 6     | 4-1/4 | 4-5/8 | 7/8   | 5/8 |           |
| 90313    | 2-1/2          | 4 x 4-1/4 | 1        | 10-1/2              | 6     | 4-1/4 | 4-5/8 | 5/8   | 5/8 |           |
| 90314    | 3              | 3 x 3-1/4 | 1        | 10-1/8              | 6-5/8 | 4-1/4 | 4-7/8 | 1     | 5/8 |           |
| 90315    | 3              | 4 x 4-1/4 | 1        | 11-1/8              | 6-5/8 | 4-1/4 | 4-7/8 | 3/4   | 5/8 |           |
| 90316    | 3-1/2          | 3 x 3-1/4 | 1        | 10-5/8              | 7-1/8 | 4-3/4 | 5-3/8 | 1-1/4 | 5/8 |           |
| 90317    | 3-1/2          | 4 x 4-1/4 | 1        | 11-5/8              | 7-1/8 | 4-3/4 | 5-3/8 | 7/8   | 5/8 |           |
| 90318    | 4              | 3 x 3-1/4 | 1        | 11-1/8              | 7-5/8 | 4-3/4 | 6     | 1-1/4 | 5/8 |           |
| 90319    | 4              | 4 x 4-1/4 | 1        | 12-1/8              | 7-5/8 | 4-3/4 | 6     | 1     | 5/8 |           |
| 90321    | 5              | 4 x 4-1/4 | 2        | 13-1/4              | 8-3/4 | 5-3/4 | 7-1/8 | 1-1/4 | 5/8 |           |
| 90322    | 5              | 5 x 4-1/4 | 3        | 13-1/4              | 8-3/4 | 5-3/4 | 7-1/8 | 1     | 5/8 |           |
| 90323    | 5              | 6 x 4-1/4 | 3        | 13-1/4              | 8-3/4 | 5-3/4 | 7-1/8 | 7/8   | 5/8 |           |
| 90325    | 6              | 4 x 4-1/4 | 2        | 14-1/4              | 9-3/4 | 6-1/4 | 8-1/2 | 1-1/2 | 5/8 |           |
| 90326    | 6              | 5 x 4-1/4 | 3        | 14-1/4              | 9-3/4 | 6-1/4 | 8-1/2 | 1-1/4 | 5/8 |           |
| 90327    | 6              | 6 x 4-1/4 | 3        | 14-1/4              | 9-3/4 | 6-1/4 | 8-1/2 | 1     | 5/8 |           |

Example for Ordering: No. 90322 Royal Type ETMF bar connector for 5" IPS aluminum run to 5 x 4-1/4" NEMA pad.

NOTE: For Bolt Shield to be used on pad see Sec. He Page He-1 Type ACS.

**ROYAL SWITCHGEAR MANUFACTURING CO.**

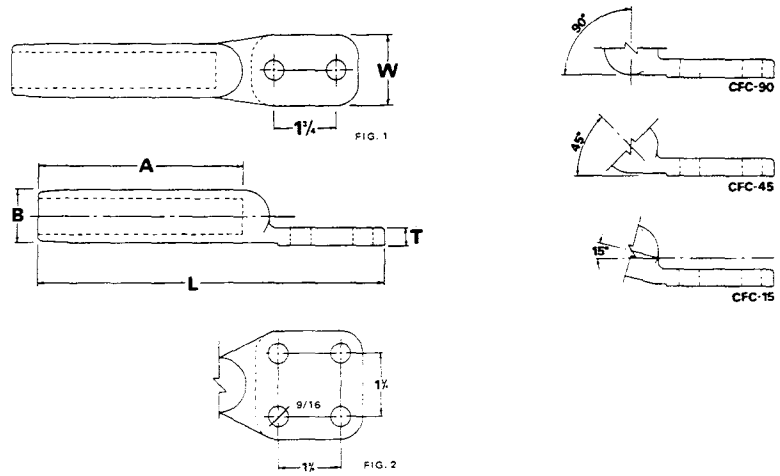
3995 Pine Lane SE • Bessemer, AL 35023 • (205) 426-4090 • FAX (205) 426-4095

# POWER CONNECTORS Be-5

## COMPRESSION TERMINAL LUG

### TYPE ECFC

Be-Terminal



| ACSR |     |     |     |     |     |     |    |     |    | ALUM |     |     |    |     | CAT. NO.     | FIG. NO. | MAX. DIM. |      |     |        |   | RECOMMENDED DIE |        |            |   |
|------|-----|-----|-----|-----|-----|-----|----|-----|----|------|-----|-----|----|-----|--------------|----------|-----------|------|-----|--------|---|-----------------|--------|------------|---|
| 18   | 24  | 26  | 30  | 30  | 36  | 40  | 54 | 54  | 54 | 18   | 37  | 61  | 91 | 127 |              |          | A         | B    | T   | L      | W | ALCOA           | BURNDY | NO. CRIMPS |   |
| 336  |     | 300 |     | 336 |     | 336 |    | 336 |    | 336  | 350 | 400 |    |     | ECFC-740-2N  | 1        | 5-7/8     | 1.25 | 1/2 | 9-3/4  | 2 | 20AH            | 317    | 426        | 2 |
|      |     | 336 |     | 336 |     | 336 |    | 336 |    | 336  | 350 | 397 |    |     | ECFC-740-3N  | 2        |           |      |     | 3      |   |                 |        |            |   |
| 397  | 397 | 397 | 336 | 397 |     | 477 |    |     |    | 477  | 450 | 477 |    |     | ECFC-814-2N  | 1        | 5-7/8     | 1.25 | 1/2 | 9-3/4  | 2 | 20AH            | 317    | 426        | 2 |
| 477  | 477 | 477 | 397 | 477 |     | 477 |    |     |    | 477  | 500 | 500 |    |     | ECFC-814-3N  | 2        |           |      |     | 3      |   |                 |        |            |   |
|      |     | 477 | 397 | 477 |     | 477 |    |     |    | 477  | 477 | 550 |    |     | ECFC-860-2N  | 1        | 5-3/4     | 1.50 | 1/2 | 9-3/4  | 2 | 24AH            | 469    | 608        | 2 |
|      |     | 477 | 397 | 477 |     | 477 |    |     |    | 477  | 500 | 556 |    |     | ECFC-860-3N  | 2        |           |      |     | 3      |   |                 |        |            |   |
| 556  | 556 | 556 | 477 | 556 |     | 556 |    |     |    | 556  | 600 | 600 |    |     | ECFC-927-2N  | 1        | 5-3/4     | 1.50 | 1/2 | 9-3/4  | 2 | 24AH            | 469    | 608        | 2 |
|      |     | 556 | 477 | 556 |     | 556 |    |     |    | 556  | 600 | 638 |    |     | ECFC-927-3N  | 2        |           |      |     | 3      |   |                 |        |            |   |
| 636  | 605 | 605 | 556 | 605 | 636 | 715 |    |     |    | 715  | 650 | 650 |    |     | ECFC-1019-2N | 1        | 6-1/4     | 1.68 | 1/2 | 10-1/4 | 2 | 27AH            | 342    |            | 2 |
| 666  | 636 | 636 | 556 | 636 | 715 | 715 |    |     |    | 715  | 650 | 650 |    |     | ECFC-1019-3N | 2        |           |      |     | 3      |   |                 |        |            |   |

FOR ADDITIONAL LISTINGS SEE NEXT PAGE

**ROYAL SWITCHGEAR MANUFACTURING CO.**

3995 Pine Lane SE • Bessemer, AL 35023 • (205) 426-4090 • FAX (205) 426-4095

# Be-6 POWER CONNECTORS

## COMPRESSION TERMINAL LUG TYPE ECFC

| ACSR<br>AWG or MCM |     |     |     |     |     |     | ALUM<br>AWG or MCM |      |      |     |     | CAT. NO.     | FIG. NO. | MAX. DIM. |       |       |        | RECOMMENDED DIE |       | NO. CRIMPS         |
|--------------------|-----|-----|-----|-----|-----|-----|--------------------|------|------|-----|-----|--------------|----------|-----------|-------|-------|--------|-----------------|-------|--------------------|
| 18                 | 24  | 26  | 30  | 35  | 46  | 54  | 19                 | 37   | 41   | 81  | 127 |              |          | A         | B     | T     | L      | W               | ALCOA |                    |
|                    | 795 | 715 | 795 | 715 | 795 | 715 |                    | 795  | 874  | 900 |     | ECFC-1111-2N | 1        |           |       |       |        |                 |       |                    |
|                    |     |     |     |     |     |     |                    | 874  | 900  |     |     | ECFC-1111-3N | 2        | 6         | 1.875 | 5/8   | 10-1/4 | 2               | 30AH  | 292 578<br>318 578 |
|                    |     |     |     |     |     |     |                    | 954  | 954  |     |     | ECFC-1196-2N | 1        |           |       |       |        |                 |       |                    |
|                    |     |     |     |     |     |     |                    | 1033 | 1000 |     |     | ECFC-1196-3N | 2        | 6         | 1.875 | 5/8   | 10-1/4 | 2               | 30AH  | 292 578<br>319 579 |
|                    |     |     |     |     |     |     |                    | 1113 | 1033 |     |     | ECFC-1262-3N | 2        |           |       |       |        |                 |       |                    |
|                    |     |     |     |     |     |     |                    | 1113 | 1192 |     |     | ECFC-1262-4N | 2        | 7         | 2.125 | 5/8   | 11-1/4 | 3               | 34AH  | 422 575<br>422 575 |
|                    |     |     |     |     |     |     |                    | 1192 | 1113 |     |     | ECFC-1314-3N | 2        |           |       |       |        |                 |       |                    |
|                    |     |     |     |     |     |     |                    | 1272 | 1250 |     |     | ECFC-1314-4N | 2        | 7         | 2.125 | 5/8   | 12-1/4 | 4               | 34AH  | 422 575<br>422 575 |
|                    |     |     |     |     |     |     |                    | 1351 | 1400 |     |     | ECFC-1412-3N | 2        |           |       |       |        |                 |       |                    |
|                    |     |     |     |     |     |     |                    | 1431 | 1500 |     |     | ECFC-1412-4N | 2        | 7-7/8     | 2.25  | 11/16 | 12-1/4 | 3               | 36AH  | 478 648<br>648 728 |
|                    |     |     |     |     |     |     |                    | 1510 | 1590 |     |     | ECFC-1466-3N | 2        | 7-13/16   | 2.375 | 11/16 | 12-1/4 | 3               | 38AH  | 684 729            |
|                    |     |     |     |     |     |     |                    | 1590 | 1590 |     |     | ECFC-1466-4N | 2        |           |       |       |        |                 |       |                    |
|                    |     |     |     |     |     |     |                    | 1700 | 1750 |     |     | ECFC-1548-3N | 2        | 8-3/4     | 2.5   | 3/4   | 13-1/4 | 3               | 40AH  | 729 735            |
|                    |     |     |     |     |     |     |                    | 1800 | 1800 |     |     | ECFC-1548-4N | 2        |           |       |       |        |                 |       |                    |
|                    |     |     |     |     |     |     |                    | 2000 | 1900 |     |     | ECFC-1681-3N | 2        | 10-7/16   | 2.63  | 3/4   | 15     | 3               | 42AH  |                    |
|                    |     |     |     |     |     |     |                    | 2000 | 2000 |     |     | ECFC-1681-4N | 2        |           |       |       |        |                 |       |                    |
|                    |     |     |     |     |     |     |                    |      |      |     |     | ECFC-1781-3N | 2        | 10-1/16   | 2.63  | 3/4   | 15     | 3               | 42AH  |                    |
|                    |     |     |     |     |     |     |                    |      |      |     |     | ECFC-1781-4N | 2        |           |       |       |        |                 |       |                    |
|                    |     |     |     |     |     |     |                    |      |      |     |     | ECFC-1722-3N | 2        | 10-3/8    | 2.75  | 3/4   | 15     | 3               | 44AH  |                    |
|                    |     |     |     |     |     |     |                    |      |      |     |     | ECFC-1722-4N | 2        |           |       |       |        |                 |       |                    |
|                    |     |     |     |     |     |     |                    |      |      |     |     | ECFC-1822-3N | 2        | 10-3/8    | 2.75  | 3/4   | 15     | 3               | 44AH  |                    |
|                    |     |     |     |     |     |     |                    |      |      |     |     | ECFC-1822-4N | 2        |           |       |       |        |                 |       |                    |
|                    |     |     |     |     |     |     |                    |      |      |     |     | ECFC-1996-3N | 2        | 10-1/4    | 3.0   | 3/4   | 16     | 4               | 48AH  |                    |
|                    |     |     |     |     |     |     |                    |      |      |     |     | ECFC-1996-4N | 2        |           |       |       |        |                 |       |                    |
|                    |     |     |     |     |     |     |                    |      |      |     |     | ECFC-2158-3N | 2        | 10-1/4    | 3.0   | 3/4   | 15     | 3               | 48AH  |                    |
|                    |     |     |     |     |     |     |                    |      |      |     |     | ECFC-2158-4N | 2        |           |       |       |        |                 |       |                    |

Example for Ordering: Royal ECFC 1111 3N Aluminum Compression Terminal Lug for 715 5 MCM 26:7 ACSR to 3 "x3" NEMA 4 hole pad, for use with Alcoa Die 30 AH  
Angle Connectors can be supplied by adding 45° or 90° to the catalog number. Example: ECFC 1111 3N 90°  
NOTE: For Bulk Shipments to be used on Pad see Sec. HE page He 1 Type ACS

**NOTE: Section Ce Reserved for  
Future Product Expansion**

**ROYAL SWITCHGEAR MANUFACTURING CO.**

3995 Pine Lane SE • Bessemer, AL 35023 • (205) 426-4090 • FAX (205) 426-4095