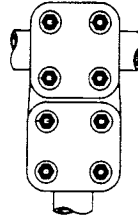


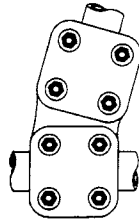
POWER CONNECTORS

TEE CONNECTORS PICTORIAL INDEX

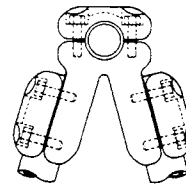
SECTION Ae



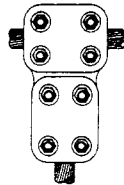
Type ETMT – Page Ae-1



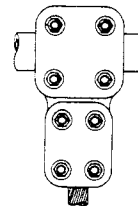
Type ETMTA – Page Ae-2



Type ETMTV – Page Ae-3



Type ECMC – Page Ae-4



Type ETMC – Page Ae-5

Ae-Tee Conn

ROYAL SWITCHGEAR MANUFACTURING CO.

3995 Pine Lane SE • Bessemer, AL 35023 • (205) 426-4090 • FAX (205) 426-4095

POWER CONNECTORS Ae-1

TEE CONNECTOR

TYPE ETMT

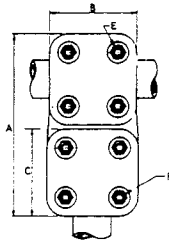


FIG 1



FIG 2

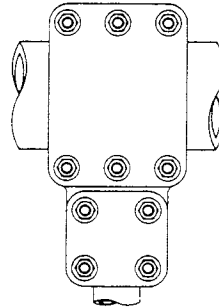


FIG 3

Ae-1 Tee Conn

CAT. NO.	IPS SIZE		FIG. NO.	DIMENSIONS (INCHES)					
	RUN	TAP		A	B	C	D	E	F
90000	2	1-1/2	1	9	3-3/4	3-3/4	4	1/2	1/2
90001	2	2	1	9	3-3/4	3-3/4	4	1/2	1/2
90002	2-1/2	2	1	9-7/8	4-1/4	3-3/4	4-5/8	5/8	1/2
90003	2-1/2	2-1/2	1	10-3/8	4-1/4	4-1/4	4-5/8	5/8	5/8
90004	3	2	1	10-1/2	4-1/4	3-3/4	4-7/8	5/8	1/2
90005	3	2-1/2	1	11	4-1/4	4-1/4	4-7/8	5/8	5/8
90006	3	3	1	11	4-1/4	4-1/4	4-7/8	5/8	5/8
90007	3-1/2	2	1	11	4-3/4	3-3/4	5-3/8	5/8	1/2
90008	3-1/2	2-1/2	1	11-1/2	4-3/4	4-1/4	5-3/8	5/8	5/8
90009	3-1/2	3	1	11-1/2	4-3/4	4-1/4	5-3/8	5/8	5/8
90010	3-1/2	3-1/2	1	12	4-3/4	4-3/4	5-3/8	5/8	5/8
90011	4	2	1	11-1/2	4-3/4	3-3/4	6	5/8	1/2
90012	4	2-1/2	1	12	4-3/4	4-1/4	6	5/8	5/8
90013	4	3	1	12	4-3/4	4-1/4	6	5/8	5/8
90014	4	3-1/2	1	12-1/2	4-3/4	4-3/4	6	5/8	5/8
90015	4	4	1	12-1/2	4-3/4	4-3/4	6	5/8	5/8
90016	5	2-1/2	2	13-1/8	5-3/4	4-1/4	7-1/8	5/8	5/8
90017	5	3	2	13-1/8	5-3/4	4-1/4	7-1/8	5/8	5/8
90018	5	3-1/2	2	13-5/8	5-3/4	4-3/4	7-1/8	5/8	5/8
90019	5	4	2	13-5/8	5-3/4	4-3/4	7-1/8	5/8	5/8
90020	5	5	3	14-5/8	5-3/4	5-3/4	7-1/8	5/8	5/8
90021	6	2-1/2	2	14-1/8	6-1/4	4-1/4	8-1/2	5/8	5/8
90022	6	3	2	14-1/8	6-1/4	4-1/4	8-1/2	5/8	5/8
90023	6	3-1/2	2	14-5/8	6-1/4	4-3/4	8-1/2	5/8	5/8
90024	6	4	2	14-5/8	6-1/4	4-3/4	8-1/2	5/8	5/8
90025	6	5	3	15-5/8	6-1/4	5-3/4	8-1/2	5/8	5/8
90026	6	6	3	16-1/8	6-1/4	6-1/4	8-1/2	5/8	5/8

Example for Ordering: #90009 Royal Type ETMT Tee connector for 3-1/2" IPS aluminum run to 3" IPS aluminum tap.

ROYAL SWITCHGEAR MANUFACTURING CO.

3995 Pine Lane SE • Bessemer, AL 35023 • (205) 426-4090 • FAX (205) 426-4095

Ae-2 POWER CONNECTORS

ANGLE TEE CONNECTOR

TYPE ETMTA

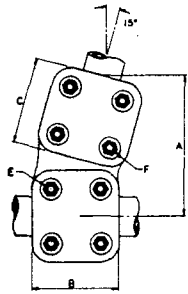


FIG. 1



FIG. 2

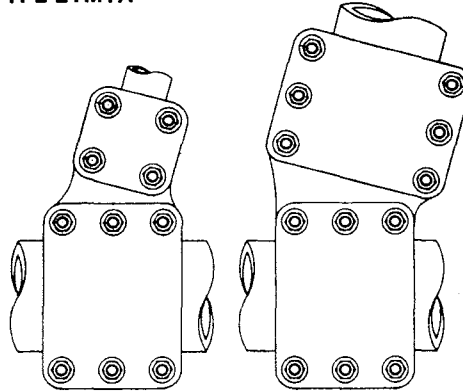


FIG. 3

CATALOG NO.	IPS SIZE		FIG. NO.	DIMENSIONS (INCHES)				BOLT SIZE		
	15°	RUN		TAP	A	B	C	D	E	F
90027		2	1-1/2	1	6-5/8	3-3/4	3-3/4	4	1/2	1/2
90028		2	2	1	6-5/8	3-3/4	3-3/4	4	1/2	1/2
90029		2-1/2	2	1	7-1/8	4-1/4	3-3/4	4-5/8	5/8	1/2
90030		2-1/2	2-1/2	1	7-5/8	4-1/4	4-1/4	4-5/8	5/8	5/8
90031		3	2	1	7-1/2	4-1/4	3-3/4	4-7/8	5/8	1/2
90032		3	2-1/2	1	8	4-1/4	4-1/4	4-7/8	5/8	5/8
90033		3	3	1	8	4-1/4	4-1/4	4-7/8	5/8	5/8
90034		3-1/2	2	1	7-3/4	4-3/4	3-3/4	5-3/8	5/8	1/2
90035		3-1/2	2-1/2	1	8-1/4	4-3/4	4-1/4	5-3/8	5/8	5/8
90036		3-1/2	3	1	8-1/4	4-3/4	4-1/4	5-3/8	5/8	5/8
90037		3-1/2	3-1/2	1	8-3/4	4-3/4	4-3/4	5-3/8	5/8	5/8
90038		4	2	1	8	4-3/4	3-3/4	6	5/8	1/2
90039		4	2-1/2	1	8-1/2	4-3/4	4-1/4	6	5/8	5/8
90040		4	3	1	8-1/2	4-3/4	4-1/4	6	5/8	5/8
90041		4	3-1/2	1	9	4-3/4	4-3/4	6	5/8	5/8
90042		4	4	1	9	4-3/4	4-3/4	6	5/8	5/8
90043		5	2-1/2	2	9-1/4	5-3/4	4-1/4	7-1/8	5/8	5/8
90044		5	3	2	9-1/4	5-3/4	4-1/4	7-1/8	5/8	5/8
90045		5	3-1/2	2	9-5/8	5-3/4	4-3/4	7-1/8	5/8	5/8
90046		5	4	2	9-5/8	5-3/4	4-3/4	7-1/8	5/8	5/8
90047		5	5	3	10-5/8	5-3/4	5-3/4	7-1/8	5/8	5/8
90048		6	2-1/2	2	9-3/4	6-1/4	4-1/4	8-1/2	5/8	5/8
90049		6	3	2	9-3/4	6-1/4	4-1/4	8-1/2	5/8	5/8
90050		6	3-1/2	2	10-1/4	6-1/4	4-3/4	8-1/2	5/8	5/8
90051		6	4	2	10-1/4	6-1/4	4-3/4	8-1/2	5/8	5/8
90052		6	5	3	11-1/4	6-1/4	5-3/4	8-1/2	5/8	5/8
90053		6	6	3	11-3/4	6-1/4	6-1/4	8-1/2	5/8	5/8

Example for Ordering: No. 90029 Royal Type ETMTA Angle Tee Connector for 2-1/2" IPS aluminum run to 2" IPS aluminum tap at 15°

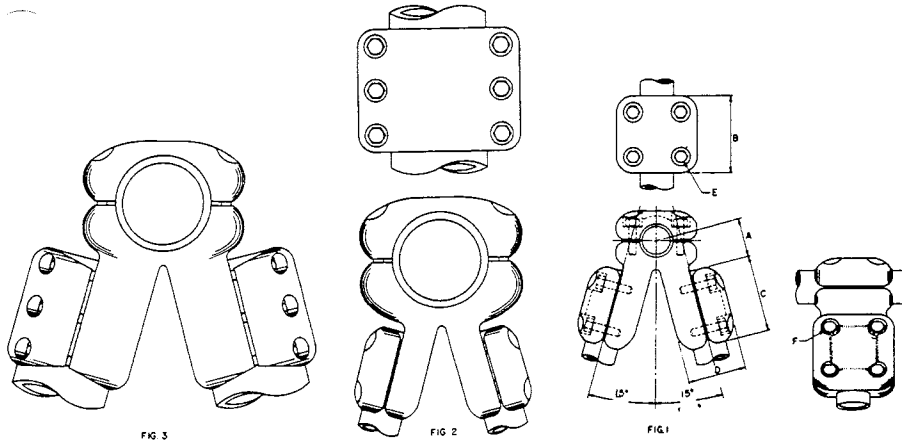
ROYAL SWITCHGEAR MANUFACTURING CO.

3995 Pine Lane SE • Bessemer, AL 35023 • (205) 426-4090 • FAX (205) 426-4095

POWER CONNECTORS Ae-3

V-TAP CONNECTOR

TYPE ETMTV



CATALOG NO.	IPS SIZE		FIG. NO.	DIMENSIONS (INCHES)						BOLT SIZE	
	RUN	TAP		A	B	C	D	E	F		
	15°										
90081	2	1-1/2	1	2	3-3/4	3-3/4	4	1/2	1/2		
90082	2	2	1	2	3-3/4	3-3/4	4	1/2	1/2		
90083	2-1/2	2	1	2-3/8	4-1/4	3-3/4	4-5/8	5/8	1/2		
90084	2-1/2	2-1/2	1	2-3/8	4-1/4	4-1/4	4-5/8	5/8	5/8		
90085	3	2	1	2-1/2	4-1/4	3-3/4	4-7/8	5/8	1/2		
90086	3	2-1/2	1	2-1/2	4-1/4	4-1/4	4-7/8	5/8	5/8		
90087	3	3	1	2-1/2	4-1/4	4-1/4	4-7/8	5/8	5/8		
90088	3-1/2	2	1	2-3/4	4-3/4	3-3/4	5-3/8	5/8	1/2		
90089	3-1/2	2-1/2	1	2-3/4	4-3/4	4-1/4	5-3/8	5/8	5/8		
90090	3-1/2	3	1	2-3/4	4-3/4	4-1/4	5-3/8	5/8	5/8		
90091	3-1/2	3-1/2	1	2-3/4	4-3/4	4-3/4	5-3/8	5/8	5/8		
90092	4	2	1	3	4-3/4	3-3/4	6	5/8	1/2		
90093	4	2-1/2	1	3	4-3/4	4-1/4	6	5/8	5/8		
90094	4	3	1	3	4-3/4	4-1/4	6	5/8	5/8		
90095	4	3-1/2	1	3	4-3/4	4-3/4	6	5/8	5/8		
90096	4	4	1	3	4-3/4	4-3/4	6	5/8	5/8		
90097	5	2-1/2	2	3-5/8	5-3/4	4-1/4	7-1/8	5/8	5/8		
90098	5	3	2	3-5/8	5-3/4	4-1/4	7-1/8	5/8	5/8		
90099	5	3-1/2	2	3-5/8	5-3/4	4-3/4	7-1/8	5/8	5/8		
90100	5	4	2	3-5/8	5-3/4	4-3/4	7-1/8	5/8	5/8		
90101	5	5	3	3-5/8	5-3/4	5-3/4	7-1/8	5/8	5/8		
90102	6	2-1/2	2	4-1/4	6-1/4	4-1/4	8-1/2	5/8	5/8		
90103	6	3	2	4-1/4	6-1/4	4-1/4	8-1/2	5/8	5/8		
90104	6	3-1/2	2	4-1/4	6-1/4	4-3/4	8-1/2	5/8	5/8		
90105	6	4	2	4-1/4	6-1/4	4-3/4	8-1/2	5/8	5/8		
90106	6	5	3	4-1/4	6-1/4	5-3/4	8-1/2	5/8	5/8		
90107	6	6	3	4-1/4	6-1/4	6-1/4	8-1/2	5/8	5/8		

Example for Ordering: No. 90095 Royal Type ETMTV V-tap connector for 4" IPS aluminum run to two 3-1/2" IPS aluminum taps at 15°

Ae-3 Tap Conn

ROYAL SWITCHGEAR MANUFACTURING CO.

3995 Pine Lane SE • Bessemer, AL 35023 • (205) 426-4090 • FAX (205) 426-4095

Ae-4 POWER CONNECTORS

TEE CONNECTOR TYPE ECMC

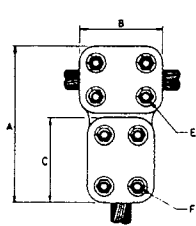


FIG 1



FIG 2

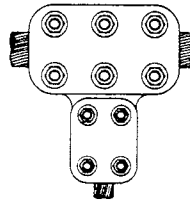


FIG 3

CAT. NO.	CABLE SIZE (MCM)				FIG. NO.	DIMENSIONS (INCHES)						BOLT SIZE	
	RUN		TAP			A	B	C	D	E	F		
	AL	ACSR	AL	ACSR									
90135	715.5-1033.5	636 - 954	715.5-1033.5	636 - 954	1	8-1/8	4	4	2-7/8	1/2	1/2		
90136	954-1431	795 -1272	715.5-1033.5	636 - 954	1	8-3/8	4-1/4	4	3	1/2	1/2		
90137	954-1431	795 -1272	954-1431	795 -1272	1	8-5/8	4-1/4	4-1/4	3	1/2	1/2		
90138	1272-1750	1113 -1590	715.5-1033.5	636 - 954	1	8-5/8	4-1/2	4	3-1/4	1/2	1/2		
90139	1272-1750	1113 -1590	954-1431	795 -1272	1	8-7/8	4-1/2	4-1/4	3-1/4	1/2	1/2		
90140	1272-1750	1113 -1590	1272-1750	1113 -1590	1	9	4-1/2	4-1/2	3-1/4	1/2	1/2		
90141	1590-2000	1.453"-1.630"	715.5-1033.5	636 - 954	1	9-1/8	5	4	3-3/4	5/8	1/2		
90142	1590-2000	1.453"-1.630"	954-1431	795 -1272	1	9-3/8	5	4-1/4	3-3/4	5/8	1/2		
90143	1590-2000	1.453"-1.630"	1272-1750	1113 -1590	1	9-1/2	5	4-1/2	3-3/4	5/8	1/2		
90144	1590-2000	1.453"-1.630"	1590-2000	1.453"-1.630"	1	10	5	5	3-3/4	5/8	5/8		
90145	2000-2500	1.630"-1.823"	715.5-1033.5	636 - 954	1	9-3/8	5-1/4	4	4	5/8	1/2		
90146	2000-2500	1.630"-1.823"	954-1431	795 -1272	1	9-5/8	5-1/4	4-1/4	4	5/8	1/2		
90147	2000-2500	1.630"-1.823"	1272-1750	1113 -1590	1	9-3/4	5-1/4	4-1/2	4	5/8	1/2		
90148	2000-2500	1.630"-1.823"	1590-2000	1.453"-1.630"	1	10	5-1/4	5	4	5/8	5/8		
90149	2000-2500	1.630"-1.823"	2000-2500	1.630"-1.823"	1	10-1/8	5-1/4	5-1/4	4	5/8	5/8		
90150	2500-3000	1.823"-1.998"	715.5-1033.5	636 - 954	1	9-5/8	5-1/2	4	4-1/4	5/8	1/2		
90151	2500-3000	1.823"-1.998"	954-1431	795 -1272	1	9-7/8	5-1/2	4-1/4	4-1/4	5/8	1/2		
90152	2500-3000	1.823"-1.998"	1272-1750	1113 -1590	1	10	5-1/2	4-1/2	4-1/4	5/8	1/2		
90153	2500-3000	1.823"-1.998"	1590-2000	1.453"-1.630"	1	10-1/2	5-1/2	5	4-1/4	5/8	5/8		
90154	2500-3000	1.823"-1.998"	2000-2500	1.630"-1.823"	1	10-5/8	5-1/2	5-1/4	4-1/4	5/8	5/8		
90155	2500-3000	1.823"-1.998"	2500-3000	1.823"-1.998"	1	10-3/4	5-1/2	5-1/2	4-1/4	5/8	5/8		
90156	3000-3500	1.998"-2.158"	715.5-1033.5	636 - 954	2	10-1/8	6	4	4-1/2	5/8	1/2		
90157	3000-3500	1.998"-2.158"	954-1431	795 -1272	2	10-3/8	6	4-1/4	4-1/2	5/8	1/2		
90158	3000-3500	1.998"-2.158"	1272-1750	1113 -1590	2	10-1/2	6	4-1/2	4-1/2	5/8	1/2		
90159	3000-3500	1.998"-2.158"	1590-2000	1.453"-1.630"	2	11	6	5	4-1/2	5/8	5/8		
90160	3000-3500	1.998"-2.158"	2000-2500	1.630"-1.823"	2	11-1/8	6	5-1/4	4-1/2	5/8	5/8		
90161	3000-3500	1.998"-2.158"	2500-3000	1.823"-1.998"	2	11-1/4	6	5-1/2	4-1/2	5/8	5/8		
90162	3000-3500	1.998"-2.158"	3000-3500	1.998"-2.158"	3	11-1/2	6	6	4-1/2	5/8	5/8		

Example for Ordering: #90146 Royal Type ECMC Tee connector for 2000-2500 MCM aluminum run to 795-1272 MCM ACSR tap.

CABLE DIA. EQUIVALENTS

MCM	Inches
715.5-1033.5	.974-1.196
954-1431	1.126-1.382
1272-1750	1.297-1.545

ROYAL SWITCHGEAR MANUFACTURING CO.

3995 Pine Lane SE • Bessemer, AL 35023 • (205) 426-4090 • FAX (205) 426-4095

POWER CONNECTORS Ae-5

TYPE ETMC

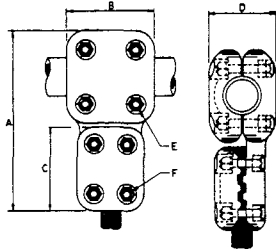


FIG. 1

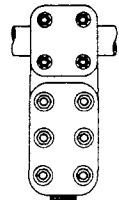


FIG. 2

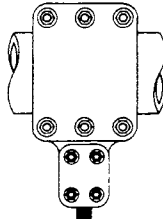


FIG. 3

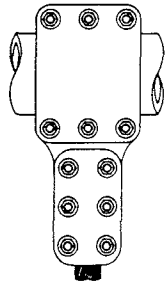


FIG. 4

CAT. NO.	IPS RUN	CONDUCTOR SIZE		FIG. NO.	DIMENSIONS (INCHES)				BOLT SIZE	
		CABLE TAP (MCM)			A	B	C	D	E	F
		AL	ACSR							
90163	2	715.5-1033.5	636 - 954	1	9-1/4	3-3/4	4	4	1/2	1/2
90164	2	954-1431	795 - 1272	1	9-1/2	3-3/4	4-1/4	4	1/2	1/2
90165	2	1272-1750	1113 - 1590	1	9-3/4	3-3/4	4-1/2	4	1/2	1/2
90166	2	1590-2000	1.453"-1.630"	1	10-1/4	3-3/4	5	4	1/2	5/8
90167	2	2000-2500	1.630"-1.823"	1	10-1/2	3-3/4	5-1/4	4	1/2	5/8
90168	2	2500-3000	1.823"-1.998"	1	10-3/4	3-3/4	5-1/2	4-3/8	1/2	5/8
90169	2	3000-3500	1.998"-2.158"	2	11-1/4	3-3/4	6	4-1/2	1/2	5/8
90170	2-1/2	715.5-1033.5	636 - 954	1	10-1/8	4-1/4	4	4-5/8	5/8	1/2
90171	2-1/2	954-1431	795 - 1272	1	10-3/8	4-1/4	4-1/4	4-5/8	5/8	1/2
90172	2-1/2	1272-1750	1113 - 1590	1	10-5/8	4-1/4	4-1/2	4-5/8	5/8	1/2
90173	2-1/2	1590-2000	1.453"-1.630"	1	11-1/8	4-1/4	5	4-5/8	5/8	5/8
90174	2-1/2	2000-2500	1.630"-1.823"	1	11-3/8	4-1/4	5-1/4	4-5/8	5/8	5/8
90175	2-1/2	2500-3000	1.823"-1.998"	1	11-5/8	4-1/4	5-1/2	4-5/8	5/8	5/8
90176	2-1/2	3000-3500	1.998"-2.158"	2	12-1/8	4-1/4	6	4-5/8	5/8	5/8
90177	3	715.5-1033.5	636 - 954	1	10-3/4	4-1/4	4	4-7/8	5/8	1/2
90178	3	954-1431	795 - 1272	1	11	4-1/4	4-1/4	4-7/8	5/8	1/2
90179	3	1272-1750	1113 - 1590	1	11-1/4	4-1/4	4-1/2	4-7/8	5/8	1/2
90180	3	1590-2000	1.453"-1.630"	1	11-3/4	4-1/4	5	4-7/8	5/8	5/8
90181	3	2000-2500	1.630"-1.823"	1	12	4-1/4	5-1/4	4-7/8	5/8	5/8
90182	3	2500-3000	1.823"-1.998"	1	12-1/4	4-1/4	5-1/2	4-7/8	5/8	5/8
90183	3	3000-3500	1.998"-2.158"	2	12-3/4	4-1/4	6	4-7/8	5/8	5/8
90184	3-1/2	715.5-1033.5	636 - 954	1	11-1/4	4-3/4	4	5-3/8	5/8	1/2
90185	3-1/2	954-1431	795 - 1272	1	11-1/2	4-3/4	4-1/4	5-3/8	5/8	1/2
90186	3-1/2	1272-1750	1113 - 1590	1	11-3/4	4-3/4	4-1/2	5-3/8	5/8	1/2
90187	3-1/2	1590-2000	1.453"-1.630"	1	12-1/4	4-3/4	5	5-3/8	5/8	5/8
90188	3-1/2	2000-2500	1.630"-1.823"	1	12-1/2	4-3/4	5-1/4	5-3/8	5/8	5/8
90189	3-1/2	2500-3000	1.823"-1.998"	1	12-3/4	4-3/4	5-1/2	5-3/8	5/8	5/8
90190	3-1/2	3000-3500	1.998"-2.158"	2	13-1/4	4-3/4	6	5-3/8	5/8	5/8
90191	4	715.5-1033.5	636 - 954	1	11-3/4	4-3/4	4	6	5/8	1/2
90192	4	954-1431	795 - 1272	1	12	4-3/4	4-1/4	6	5/8	1/2
90193	4	1272-1750	1113 - 1590	1	12-1/4	4-3/4	4-1/2	6	5/8	1/2
90194	4	1590-2000	1.453"-1.630"	1	12-3/4	4-3/4	5	6	5/8	5/8
90195	4	2000-2500	1.630"-1.823"	1	13	4-3/4	5-1/4	6	5/8	5/8
90196	4	2500-3000	1.823"-1.998"	1	13-1/4	4-3/4	5-1/2	6	5/8	5/8
90197	4	3000-3500	1.998"-2.158"	2	13-3/4	4-3/4	6	6	5/8	5/8
90198	5	715.5-1033.5	636 - 954	3	12-7/8	5-3/4	4	7-1/8	5/8	1/2
90199	5	954-1431	795 - 1272	3	13-1/8	5-3/4	4-1/4	7-1/8	5/8	1/2
90200	5	1272-1750	1113 - 1590	3	13-3/8	5-3/4	4-1/2	7-1/8	5/8	1/2
90201	5	1590-2000	1.453"-1.630"	3	13-7/8	5-3/4	5	7-1/8	5/8	5/8
90202	5	2000-2500	1.630"-1.823"	3	14-1/8	5-3/4	5-1/4	7-1/8	5/8	5/8
90203	5	2500-3000	1.823"-1.998"	3	14-3/8	5-3/4	5-1/2	7-1/8	5/8	5/8
90204	5	3000-3500	1.998"-2.158"	4	14-7/8	5-3/4	6	7-1/8	5/8	5/8
90205	6	715.5-1033.5	636 - 954	3	13-7/8	6-1/4	4	8-1/2	5/8	1/2
90206	6	954-1431	795 - 1272	3	14-1/8	6-1/4	4-1/4	8-1/2	5/8	1/2
90207	6	1272-1750	1113 - 1590	3	14-3/8	6-1/4	4-1/2	8-1/2	5/8	1/2
90208	6	1590-2000	1.453"-1.630"	3	14-7/8	6-1/4	5	8-1/2	5/8	5/8
90209	6	2000-2500	1.630"-1.823"	3	15-1/8	6-1/4	5-1/4	8-1/2	5/8	5/8
90210	6	2500-3000	1.823"-1.998"	3	15-3/8	6-1/4	5-1/2	8-1/2	5/8	5/8
90211	6	3000-3500	1.998"-2.158"	4	15-7/8	6-1/4	6	8-1/2	5/8	5/8

Example for Ordering: #90185 Royal Type ETMC Tee connector for 3-1/2" IPS aluminum run to 795-1272 MCM ACSR tap.

CABLE DIA. EQUIVALENTS

MCM	Inches
715.5-1033.5	.974-1.196
954-1431	1.126-1.382
1272-1750	1.297-1.545

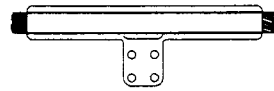
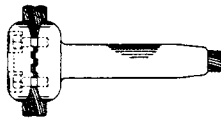
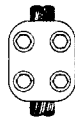
Ae-5 Conn

ROYAL SWITCHGEAR MANUFACTURING CO.

3995 Pine Lane SE • Bessemer, AL 35023 • (205) 426-4090 • FAX (205) 426-4095

Ae-6 POWER CONNECTORS

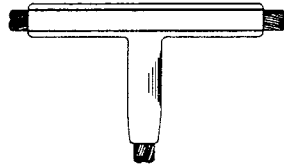
The connectors illustrated below are available on special order. For information, details, and prices, consult the factory or your Royal sales representative. Please describe your application, giving operating voltage and other pertinent details.



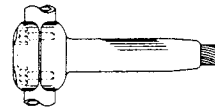
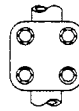
TYPE ECKF
Compression Tee Connector to Flat Pad



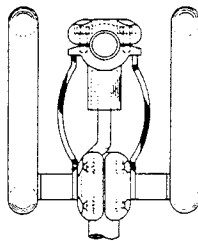
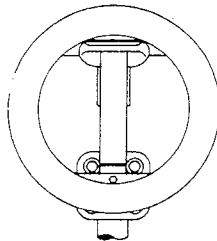
TYPE ECMCC
Bolted Compression Tee Connector



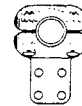
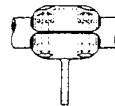
TYPE ECKC
Compression Tee Connector



TYPE ETMCC
Bolted Compression Tee Connector



TYPE ETMLT
Expansion Tee Connector



TYPE ETMFX
Bar Connector

ROYAL SWITCHGEAR MANUFACTURING CO.

3995 Pine Lane SE • Bessemer, AL 35023 • (205) 426-4090 • FAX (205) 426-4095