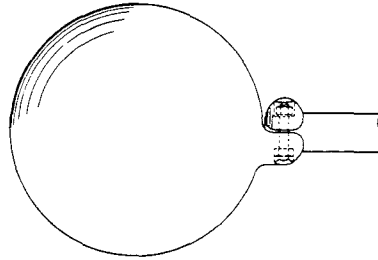


POWER CONNECTORS

SECTION He PICTORIAL INDEX

SECTION He

He-Miscellaneous



Type EAOBT – Page He-1

ACS-1



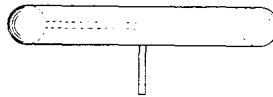
ACS-2



ACS-3



Type ACS – Page He-1



Corona Rings – Page He-2

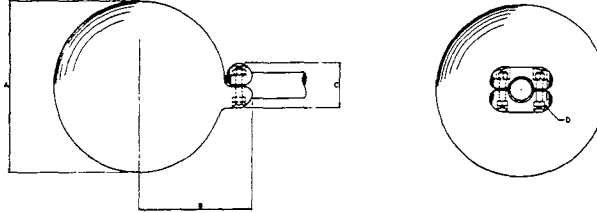
ROYAL SWITCHGEAR MANUFACTURING CO.

3995 Pine Lane SE • Bessemer, AL 35023 • (205) 426-4090 • FAX (205) 426-4095

POWER CONNECTORS He-1

CORONA END BELL TYPE EAOBT

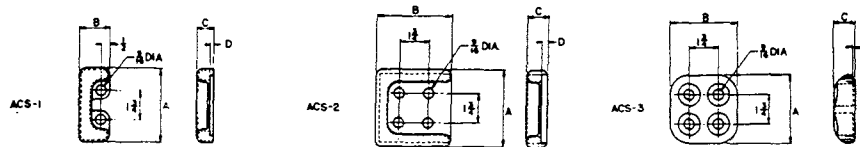
He-Miscellaneous



CATALOG NO.			IPS	DIMENSIONS (INCHES)							
345KV	500KV	765KV		A			B			C	D
			345KV	500KV	765KV	345KV	500KV	765KV			
91286	91216	91223	2	7-1/2	13	16	5-3/4	8-1/2	10	4	1/2
91287	91217	91224	2-1/2	7-1/2	13	16	6	8-3/4	12-1/4	4-5/8	5/8
91288	91218	91225	3	7-1/2	13	16	6	8-3/4	12-1/4	4-7/8	5/8
91289	91219	91226	3-1/2	7-1/2	13	16	6	8-3/4	12-1/4	5-3/8	5/8
91290	91220	91227	4	7-1/2	13	16	6	8-3/4	12-1/4	6	5/8
91291	91221	91228	5	10	13	16	7-1/4	8-3/4	12-1/4	7-1/8	5/8
91292	91222	91229	6	10	13	16	7-1/4	8-3/4	12-1/4	8-1/2	5/8

Example for Ordering: No. 91216 Royal Type EAOBT corona end bell for 2" IPS aluminum.

CORONA BOLT SHIELD TYPES ACS-1 ACS-2 ACS-3



TYPE	CATALOG NO.	PAD SIZE	DIMENSIONS (INCHES)			
			A	B	C	D
ACS-1	91245	4 x 4-1/4	4-3/8	1-13/16	1	7/32
ACS-2	91246	4 x 4-1/4	4-9/16	4-17/32	1-1/4	3/8
ACS-3	91247	4 x 4-1/4	4	4	1-1/4	1/8
ACS-3	91301	3 x 3-1/4	3	3	1-1/4	1/8

NOTES:

- The ACS Series corona bolt shields can be used on 3 x 3-1/4 pads provided adequate clearance is available.
- All connectors in this catalog requiring pad mounting, except for expansion-type connectors, have been designed to accept the Type ACS-3 corona bolt shield, including those with 3 x 3-1/4 pads.

Example for Ordering: #91245 Royal Type ACS-1 corona bolt shield.

ROYAL SWITCHGEAR MANUFACTURING CO.

3995 Pine Lane SE • Bessemer, AL 35023 • (205) 426-4090 • FAX (205) 426-4095

He-2 POWER CONNECTORS

CORONA RINGS

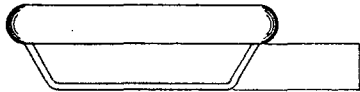
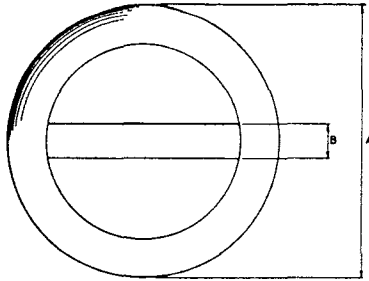


FIG. 1

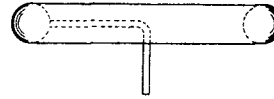


FIG. 2

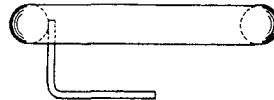


FIG. 3

2" IPS

CATALOG NO.	DIMENSIONS (INCHES)		
	A	B	C
91230	16		
91231	21	Customer to Specify	Customer to Specify
91232	22	to	
91233	24	Specify	Customer to Specify
91234	30	2" Min. to	
91235	31-1/2	to	
91236	33	5" Max.	
91237	36		

4" IPS

CATALOG NO.	DIMENSIONS (INCHES)		
	A	B	C
91238	21		
91239	22	Customer to Specify	Customer to Specify
91240	24	to	
91241	30	Specify	Customer to Specify
91242	31-1/2	2" Min. to	
91243	33	to	
91244	36	5" Max.	

NOTES:

1. It is recommended that bus systems rated in excess of 500 kv utilize corona rings of the 4" IPS aluminum tubing design.
2. Holes in pad optional. Specify requirements when ordering.
3. When ordering, state which configuration (Fig. 1, Fig. 2, or Fig. 3) is required.

Example for Ordering: #91234 Royal corona ring, Fig. 1— B = 2", C = 3". NEMA 2-hole drilling on centers.

ROYAL SWITCHGEAR MANUFACTURING CO.

3995 Pine Lane SE • Bessemer, AL 35023 • (205) 426-4090 • FAX (205) 426-4095