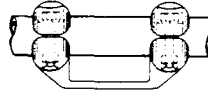


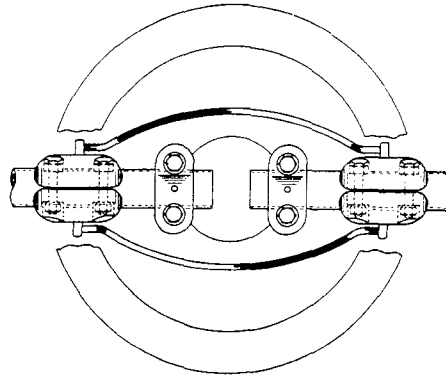
# POWER CONNECTORS

## BUS SUPPORT FITTINGS PICTORIAL INDEX

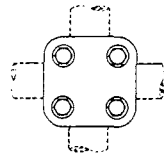
### SECTION Fe



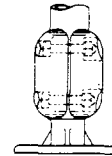
Type EG-5 – Page Fe-1  
NEMA HEIGHT



Type E TTLZ-5 – Page Fe-2  
NEMA HEIGHT



Type EAT-5 – Page Fe-3



Type EVT-5 – Page Fe-4

Fe-Bus Support

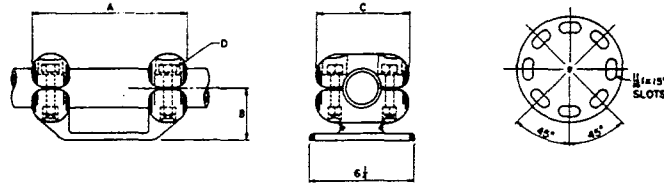
**ROYAL SWITCHGEAR MANUFACTURING CO.**

3995 Pine Lane SE • Bessemer, AL 35023 • (205) 426-4090 • FAX (205) 426-4095

# POWER CONNECTORS **Fe-1**

## BUS SUPPORT FITTING

TYPE EG-5 (Nema Height)



| CAT. NO. | IPS   | BOLT CIRCLE | DIMENSIONS (INCHES) |       |        |     |
|----------|-------|-------------|---------------------|-------|--------|-----|
|          |       |             | A                   | B     | C      | D   |
| 90769    | 2     | 5           | 9-1/4               | 2-3/4 | 7-1/4  | 1/2 |
| 90770    | 2-1/2 | 5           | 11-1/4              | 3-1/8 | 7-1/4  | 5/8 |
| 90771    | 3     | 5           | 11-1/4              | 3-5/8 | 7-1/4  | 5/8 |
| 90772    | 3-1/2 | 5           | 11-1/4              | 4     | 7-3/4  | 5/8 |
| 90773    | 4     | 5           | 11-1/4              | 4-1/2 | 8-1/8  | 5/8 |
| 90774    | 5     | 5           | 11-1/4              | 5     | 9-1/2  | 5/8 |
| 90775    | 6     | 5           | 11-1/4              | 5-1/2 | 10-1/2 | 5/8 |

**NOTES:**

- Supplied with Cap Screws for Upright Mounting unless otherwise specified. (Galv.)
- For Base MTG on Cap and Pin Insulator add Suffix-B for Bolts, Nuts and Lockwashers. (Galv.) Example: 90773-B
- Caps are reversible for tight or slip fit.
- Anti-chatter Springs available by adding Suffix-AC. Example: 90773-AC
- One Wrench Installation.

| RECOMMENDED TIGHTENING TORQUE                                 |               |
|---|---------------|
| No. 2024 Alum. Bolts With Alumilite Finish & No-Oxide Coating |               |
| BOLT DIA.   | FT. LB TORQUE |
| 1/2   | 30            |
| 5/8   | 50            |

Fe-Bus Support

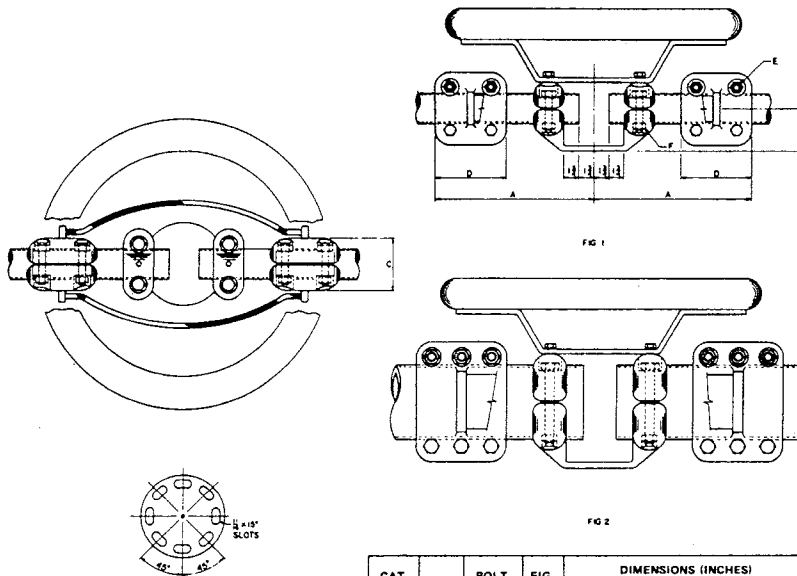
**ROYAL SWITCHGEAR MANUFACTURING CO.**

3995 Pine Lane SE • Bessemer, AL 35023 • (205) 426-4090 • FAX (205) 426-4095

# Fe-2 POWER CONNECTORS

## EXPANSION BUS SUPPORT COUPLER

TYPE E TTLZ (Nema Height)



| RECOMMENDED TIGHTENING TORQUE                                 |               |
|---|---------------|
| No. 2024 Alum. Bolts With Alumilite Finish & No-Oxide Coating |               |
| BOLT DIA.   | FT. LB TORQUE |
| 1/2   | 30            |
| 5/8   | 50            |

| CAT. NO. | IPS   | BOLT CIRCLE | FIG. NO. | DIMENSIONS (INCHES) |       |       |       |     |     |
|----------|-------|-------------|----------|---------------------|-------|-------|-------|-----|-----|
|          |       |             |          | A                   | B     | C     | D     | E   | F   |
| 90727    | 2     | 5           | 1        | 11                  | 2-3/4 | 4     | 3-3/4 | 1/2 | 1/2 |
| 90728    | 2-1/2 | 5           | 1        | 11-3/4              | 3-1/8 | 4-5/8 | 4-1/4 | 5/8 | 5/8 |
| 90729    | 3     | 5           | 1        | 11-3/4              | 3-5/8 | 4-7/8 | 4-1/4 | 5/8 | 5/8 |
| 90730    | 3-1/2 | 5           | 1        | 12-1/4              | 4     | 5-3/8 | 4-3/4 | 5/8 | 5/8 |
| 90731    | 4     | 5           | 1        | 12-1/4              | 4-1/2 | 6     | 4-3/4 | 5/8 | 5/8 |
| 90732    | 5     | 5           | 2        | 13-1/4              | 5     | 7-1/8 | 5-3/4 | 5/8 | 5/8 |
| 90733    | 6     | 5           | 2        | 13-3/4              | 5-1/2 | 8-1/2 | 6-1/4 | 5/8 | 5/8 |

### NOTES:

- For operation above 550 kv, special 4" IPS aluminum-tubing corona rings must be used. Add Suffix-XV to catalog numbers.
- "A" dimension is mean dimension for installation purposes.
- Supplies with Cap Screws for Upright Mounting unless otherwise specified. (Galv.)
- For Base MTG on Cap and Pin Insulator add Suffix-B for Bolts, Nuts and Lockwashers. (Galv.) Example: 90728-B
- Anti-chatter Springs available by adding Suffix-AC. Example: 90728-AC
- One Wrench Installation.

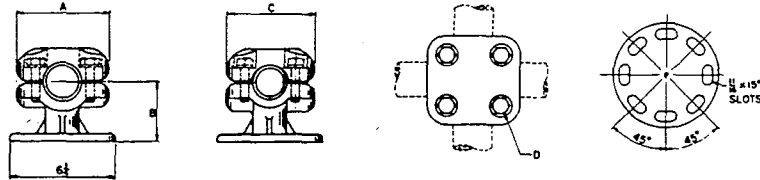
**ROYAL SWITCHGEAR MANUFACTURING CO.**

3995 Pine Lane SE • Bessemer, AL 35023 • (205) 426-4090 • FAX (205) 426-4095

# POWER CONNECTORS **Fe-3**

## BUS SUPPORT

### TYPE EAT-5



| CAT. NO. | CONDUCTOR SIZE |      |             |               | DIMENSIONS (INCHES) |       |       |     |
|----------|----------------|------|-------------|---------------|---------------------|-------|-------|-----|
|          | IPS            | B.C. | CABLE - MCM |               | A                   | B     | C     | D   |
|          |                |      | AL          | ACSR          |                     |       |       |     |
| 90724    | 1/2 - 1        | 5    | 715.5-1750  | 636 -1590     | 4-3/8               | 3-1/2 | 3-5/8 | 1/2 |
| 90725    | 1-1/4 - 1-1/2  | 5    | 2000-3000   | 1.630"-1.998" | 4-3/4               | 3-3/4 | 4-3/8 | 1/2 |
| 90726    | 1-1/2 - 2      | 5    | 3000-3500   | 1.998"-2.158" | 5-1/8               | 4     | 4-3/4 | 1/2 |

**NOTES:**

- Supplied with Cap Screws for Upright Mounting unless otherwise specified. (Galv.)
- For Base MTG on Cap and Pin Insulator add Suffix-B for Bolts, Nuts and Lockwashers. (Galv.) Example: 90725-B
- One Wrench Installation.

| RECOMMENDED TIGHTENING TORQUE                                 |               |
|---|---------------|
| No. 2024 Alum. Bolts With Alumilite Finish & No-Oxide Coating |               |
| BOLT DIA.   | FT. LB TORQUE |
| 1/2   | 30            |
| 5/8   | 50            |

Fe-Bus Support

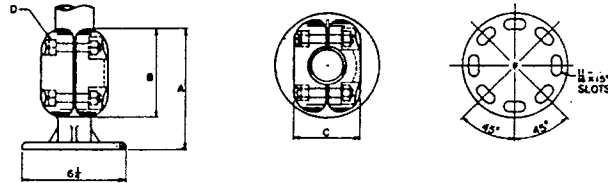
**ROYAL SWITCHGEAR MANUFACTURING CO.**

3995 Pine Lane SE • Bessemer, AL 35023 • (205) 426-4090 • FAX (205) 426-4095

# Fe-4 POWER CONNECTORS

## VERTICAL BUS SUPPORT FITTING

### TYPE EVT-5



| CAT. NO. | IPS   | BOLT CIRCLE | DIMENSIONS (INCHES) |       |       |     |
|----------|-------|-------------|---------------------|-------|-------|-----|
|          |       |             | A                   | B     | C     | D   |
| 90734    | 2     | 5           | 5-1/2               | 3-1/2 | 4     | 1/2 |
| 90735    | 2-1/2 | 5           | 6                   | 4     | 4-5/8 | 5/8 |
| 90736    | 3     | 5           | 6                   | 4     | 4-7/8 | 5/8 |
| 90737    | 3-1/2 | 5           | 6                   | 4     | 5-3/8 | 5/8 |
| 90738    | 4     | 5           | 6                   | 4     | 6     | 5/8 |
| 90739    | 5     | 5           | 6-3/4               | 4-3/4 | 7-1/8 | 5/8 |
| 90740    | 6     | 5           | 6-3/4               | 4-3/4 | 8-1/2 | 5/8 |

#### NOTES:

- Supplied with Cap Screws for Upright Mounting unless otherwise specified. (Galv.)
- For Base MTG on Cap and Pin Insulator add Suffix-B for Bolts, Nuts and Lockwashers. (Galv.) Example: 90734-B
- Caps are reversible for tight or slip fit.
- One Wrench Installation.

| RECOMMENDED TIGHTENING TORQUE                                 |               |
|---|---------------|
| No. 2024 Alum. Bolts With Alumilite Finish & No-Oxide Coating |               |
| BOLT DIA.   | FT. LB TORQUE |
| 1/2   | 30            |
| 5/8   | 50            |

**ROYAL SWITCHGEAR MANUFACTURING CO.**

3995 Pine Lane SE • Bessemer, AL 35023 • (205) 426-4090 • FAX (205) 426-4095