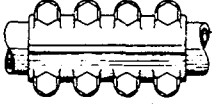

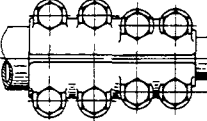
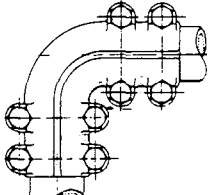
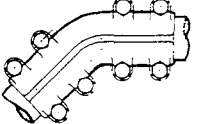
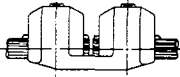
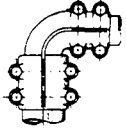

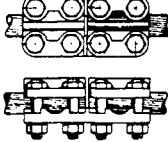
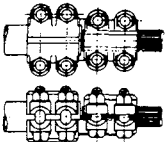
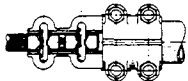


# POWER CONNECTORS

## COUPLER PICTORIAL INDEX

### SECTION Db

 <p>Type RS Page Db-1</p>	 <p>Type UCC Page Db-1</p>	 <p>Type RR Page Db-2</p>
 <p>Type RE-90 Page Db-3</p>	 <p>Type RE-45 Page Db-3</p>	 <p>Type CTS Page Db-3</p>
 <p>Type RER Page Db-4</p>	 <p>Type BXC Page Db-5</p>	 <p>Type LM Page Db-5</p>
 <p>Type MRC Page Db-6</p>	 <p>Type UCE Page Db-7</p>	

Db-Coupler

**ROYAL SWITCHGEAR MANUFACTURING CO.**

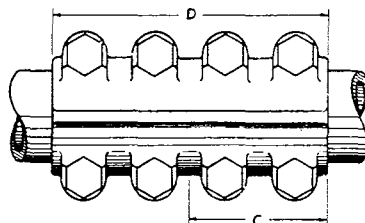
3995 Pine Lane SE • Bessemer, AL 35023 • (205) 426-4090 • FAX (205) 426-4095

# POWER CONNECTORS



## STRAIGHT COUPLER

### TYPE RS



IPS Size	Catalog No.	Max. Dim. in Inches	
		C	D
3/8	1915	1 1/2	3
1/2	1251	1 1/2	3
3/4	1252	1 5/8	3 1/4
1	1253	2	4
1 1/4	1254	2 5/8	5 1/4
1 1/2	1255	3	6
2	1256	3 5/8	7 1/4
2 1/2	1257	4 1/2	9
3	1258	5	10
3 1/2	1916	5 1/2	11
4	1917	6 1/4	12 1/2

Example for ordering: - Royal Type RR Straight Couplers for 2" IPS Tubing.

Silicon Bronze bolts, nuts and lockwashers are standard.

Bolt heads are nested between ears on the casting which prevents the bolt head from turning, and permits one wrench installation.

Certified dimension prints will be furnished on request.

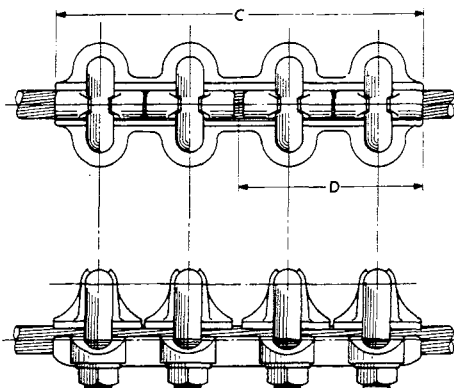
Special or unlisted sizes readily furnished.

NOTE: 1/2" bolts are furnished as STANDARD for 1/2" IPS tubing and larger, and 500 MCM cable and larger.

NOTE: This connector will meet or exceed NEMA requirements for Class CF-2 Pub. SG-1.

## STRAIGHT CABLE CONNECTOR

### TYPE UCC



Individual keepers assembled captive on "U" bolts provide highest contact pressure.

Cable Size				Cat. No.	Max. Dimensions in Inches	
Min.	Max.	Min.	Max.		C	D
#6	2/0	#6	2/0	1630	5 1/4	2 5/8
#6	2/0	#1	4/0	1631	5 1/4	2 5/8
#6	2/0	4/0	300	1632	5 1/4	2 5/8
#1	4/0	#1	4/0	1633	5 1/4	2 5/8
#1	4/0	4/0	300	1634	5 1/4	2 5/8
#1	4/0	300	500	1635	5 1/2	2 7/8
4/0	300	4/0	300	1636	5 1/2	2 3/4
4/0	300	300	500	1637	5 1/2	2 3/4
4/0	300	500	800	1638	5 3/4	3
300	500	300	500	1639	5 3/4	2 7/8
300	500	500	800	1640	6	3 1/8
300	500	750	1,000	1641	6 1/4	3 3/8
500	800	500	800	1642	6 3/4	3 3/8
500	800	750	1,000	1643	7	3 5/8
500	800	1,000	1,500	1644	7 1/2	4 1/8
500	800	1,500	2,000	1645	8	4 5/8
750	1,000	750	1,000	1646	8	4
750	1,000	1,000	1,500	1647	8	4
750	1,000	1,500	2,000	1648	8 1/2	4 1/2
1,000	1,500	1,000	1,500	1649	9	4 1/2
1,000	1,500	1,500	2,000	1650	9 1/4	4 3/4
1,500	2,000	1,500	2,000	1651	9 1/4	4 3/4

Example for ordering: - #1645 Royal Type UCC straight cable connector 800 to 2,000 MCM cable.

Silicon Bronze bolts, nuts and lockwashers are standard.

Certified dimension prints will be furnished on request.

Special or unlisted sizes readily furnished.

NOTE: 1/2" bolts are furnished as STANDARD for 1/2" IPS tubing and larger, and 500 MCM cable and larger.

NOTE: This connector will meet or exceed NEMA requirements for Class CF-2 Pub. SG-1.

DB-Coupler

## ROYAL SWITCHGEAR MANUFACTURING CO.

3995 Pine Lane SE • Bessemer, AL 35023 • (205) 426-4090 • FAX (205) 426-4095

# Db-2 POWER CONNECTORS

## REDUCER COUPLER

### TYPE RR

IPS Tube		Catalog No.	Max. Dim. in inches	
A	B		C	D
1/2	3/8	1652	1 1/2	3
3/4	1/2	1653	2	4
1	1/2	1654	2	4
1	3/4	1655	2	4
1 1/4	1/2	1656	2	4
1 1/4	3/4	1657	2	4
1 1/4	1	1658	2	4
1 1/2	1/2	1659	2	4
1 1/2	3/4	1660	2	4
1 1/2	1	1661	2	4
1 1/2	1 1/4	1662	2 3/4	5 1/4
2	1/2	1663	2	4
2	3/4	1664	2	4
2	1	1665	2	4
2	1 1/4	1666	2 3/4	5 1/4
2	1 1/2	1667	2 3/4	5 1/4
2 1/2	1/2	1668	2	4
2 1/2	3/4	1669	2	4
2 1/2	1	1670	2	4
2 1/2	1 1/4	1671	2 3/4	5 1/4
2 1/2	1 1/2	1672	2 3/4	5 1/4
2 1/2	2	1673	2 3/4	5 1/4
3	3/4	1674	2	4
3	1	1675	2 3/4	5 1/4
3	1 1/4	1676	2 3/4	5 1/4
3	1 1/2	1677	2 3/4	5 1/4
3	2	1678	2 3/4	5 1/4
3	2 1/2	1679	2 3/4	5 1/4
3 1/2	1	1680	2 3/4	5 1/4
3 1/2	1 1/4	1681	2 3/4	5 1/4
3 1/2	1 1/2	1682	2 3/4	5 1/4
3 1/2	2	1683	2 3/4	5 1/4
3 1/2	2 1/2	1684	2 3/4	5 1/4
3 1/2	3	1685	3 1/4	6 1/2
4	1	1686	2 3/4	5 1/4
4	1 1/2	1687	2 3/4	5 1/4
4	2	1688	2 3/4	5 1/4
4	2 1/2	1689	2 3/4	5 1/4
4	3	1810	3 1/4	6 1/2
4	3 1/2	1811	3 1/4	6 1/2

Example for ordering: - #1675 Royal Type RR reducer couplers 3" to 1" IPS tubing.

Silicon Bronze bolts, nuts and lockwashers are standard.

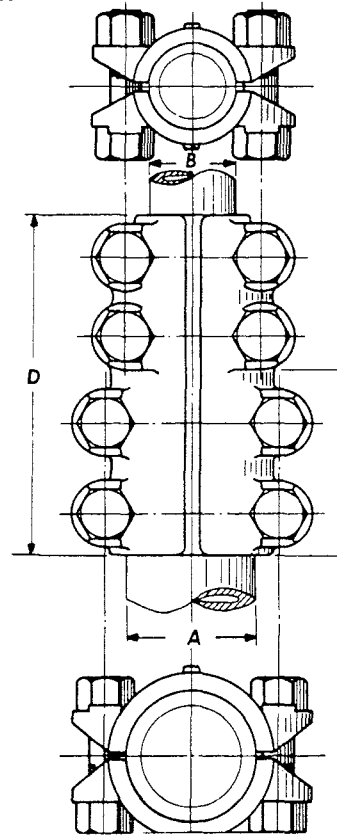
Bolt heads are nested between ears on the casting which prevents the bolt head from turning, and permits one wrench installation.

Certified dimension prints will be furnished on request.

Special or unlisted sizes readily furnished.

NOTE: 1/2" bolts are furnished as STANDARD for 1/2" IPS tubing and larger, and 500 MCM cable and larger.

NOTE: This connector will meet or exceed NEMA requirements for Class CF-2 Pub. SG-1.



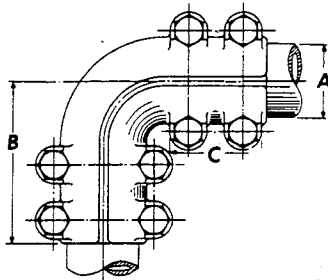
## ROYAL SWITCHGEAR MANUFACTURING CO.

3995 Pine Lane SE • Bessemer, AL 35023 • (205) 426-4090 • FAX (205) 426-4095

# POWER CONNECTORS Db-3

## 90° ELBOW

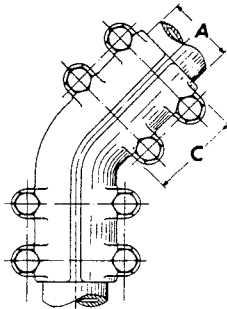
### TYPE RE-90



IPS Size	Cat. No.	Dimensions in Inches		
		A	B	C
3/8	1278	.675	2 3/8	1 1/2
1/2	1279	.840	2 1/2	1 1/2
3/4	1280	1.050	2 7/8	1 3/4
1	1281	1.315	3 1/4	2
1 1/4	1282	1.660	3 7/8	2 1/2
1 1/2	1283	1.900	4	2 3/4
2	1284	2.375	5	3
2 1/2	1285	2.875	5 3/4	3 1/2
3	1286	3.500	7 1/8	4 1/2

## 45° ELBOW

### TYPE RE-45



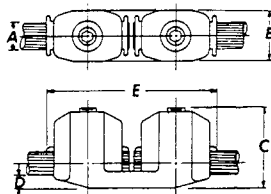
IPS Size	Cat. No.	Dimensions in Inches	
		A	C
3/8	1287	.675	1 1/2
1/2	1288	.840	1 1/2
3/4	1289	1.050	1 3/4
1	1290	1.315	2
1 1/4	1291	1.660	2 1/2
1 1/2	1292	1.900	2 3/4
2	1293	2.375	3
2 1/2	1294	2.875	3 1/2
3	1295	3.500	4 1/2

Example for ordering: - #1281 Royal Type RE90 Elbow.  
1" IPS tubing.

Elbow fittings for angles other than shown will be furnished when requested. Larger sizes available.

## STRAIGHT COUPLER

### TYPE CTS



Catalog No.	Conductor Range	Dimensions in Inches					Packed Weight
		A	B	C	D	E	
1965	#6 TO 2/0 SOL.	.4190 MAX.	13/16	1 7/16	1/4	2 5/8	.6
1966	1/0 SOL. TO 350 MCM	.6818 MAX.	1 1/8	1 7/8	5/16	3 1/8	.8
1967	250 MCM TO 500 MCM	.8154 MAX.	1 1/4	2 3/16	5/16	4	1.0
1968	400 MCM TO 750 MCM	.9990 MAX.	1 9/16	2 5/16	3/8	4 1/2	1.4
1969	600 MCM TO 1000 MCM	1.1529 MAX.	1 3/4	2 3/4	3/8	6	2.3

Example for Ordering: - #1968 Royal Type CTS Straight Coupler 400-750 MCM Cable.

The CTS Coupler is a combination that can be used as a reducer because of the conductor range.

The smooth, easy contour permits a neat taping job.

Db-Coupler

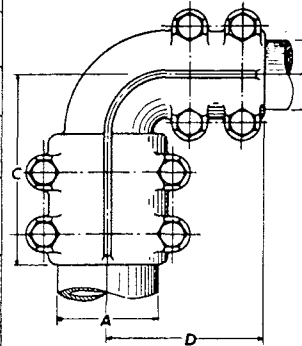
## ROYAL SWITCHGEAR MANUFACTURING CO.

3995 Pine Lane SE • Bessemer, AL 35023 • (205) 426-4090 • FAX (205) 426-4095

# Db-4 POWER CONNECTORS

## REDUCER ELBOW TYPE RER

Catalog No.	IPS Tube		Max. Dimensions in Inches	
	A	B	C	D
18057	3/4	1/2	1 1/2	2 1/4
18058	1	1/2	1 1/2	2 7/8
18059	1	3/4	1 3/4	3 1/8
18060	1 1/4	1/2	1 1/2	2 7/8
18061	1 1/4	3/4	1 3/4	3 1/8
18062	1 1/4	1	2	3 5/8
18063	1 1/2	1/2	1 1/2	3 1/8
18064	1 1/2	3/4	1 3/4	3 5/8
18065	1 1/2	1	2	3 7/8
18066	1 1/2	1 1/4	2 1/2	4 1/8
18067	2	1/2	1 1/2	3 5/8
18068	2	3/4	1 3/4	3 7/8
18069	2	1	2	4 1/2
18070	2	1 1/4	2 1/2	5
18071	2	1 1/2	2 3/4	5 1/4
18072	2 1/2	1/2	1 1/2	3 7/8
18073	2 1/2	3/4	1 3/4	4 1/8
18074	2 1/2	1	2	4 3/8
18075	2 1/2	1 1/4	2 1/2	4 7/8
18076	2 1/2	1 1/2	2 3/4	5 1/8
18077	2 1/2	2	3	5 1/2
18078	3	3/4	1 3/4	4 1/4
18079	3	1	2	4 5/8
18080	3	1 1/4	2 1/2	5 1/8
18081	3	1 1/2	2 3/4	5 5/8
18082	3	2	3	5 7/8
18083	3	2 1/2	3 1/2	6 1/2
18084	4	1 1/4	2 1/2	5 1/2
18085	4	1 1/2	2 3/4	5 3/4
18086	4	2	3	6
18087	4	2 1/2	3 1/2	6 1/2
18088	4	3	4	7
18089	4	3 1/2	4	7



Example for Ordering: - #18070 Royal Type RER-90 Reducer Elbow 1-1/4" to 1-1/2" IPS Tube.

Silicon Bronze bolts, nuts and lockwashers are standard. Bolt heads are nested between ears on the casting which prevents the bolt head from turning, and permits one wrench installation.

Certified dimension prints will be furnished on request.

Special or unlisted sizes readily furnished.

NOTE: 1/2" bolts are furnished as STANDARD for 1/2" IPS tubing and larger, and 500 MCM cable and larger.

NOTE: This connector will meet or exceed NEMA requirements for Class CF-2 Pub. SG-1.

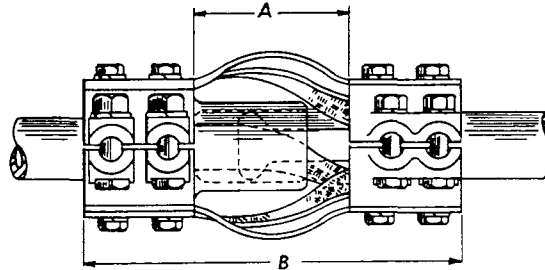
### ROYAL SWITCHGEAR MANUFACTURING CO.

3995 Pine Lane SE • Bessemer, AL 35023 • (205) 426-4090 • FAX (205) 426-4095

# POWER CONNECTORS Db-5

## EXPANSION COUPLER

### TYPE BXC



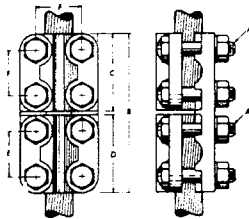
IPS TUBE	With Alignment Guide		Without Alignment Guide		Dimensions in Inches	
	Catalog Number	Catalog Number	Catalog Number	Catalog Number	A Min.	B
1/2	6371	6380	6380	6380	2	5 1/4
3/4	6372	6381	6381	6381	2 1/2	6 1/2
1	6373	6382	6382	6382	2 1/2	7
1 1/4	6374	6383	6383	6383	3 1/2	10 1/2
1 1/2	6375	6384	6384	6384	4	11
2	6376	6385	6385	6385	6	12
2 1/2	6377	6386	6386	6386	6 1/2	15 1/4
3	6378	6387	6387	6387	7	17 1/2
4	6379	6388	6388	6388	7 1/2	19 1/4

Example for ordering: - #6376 Royal Type BXC Expansion Coupler 2" IPS Tubing with alignment guide.

## STRAIGHT COUPLER

### TYPE LM

Type LM is a wide application Connector for Tube - Cable - Flat Surface. Can be used as a Tee, Coupler or 90° take off.



Cat. No.	Run		Tap		Max. Dimensions in Inches					
	Cable	IPS	Cable	IPS	A	B	C	D	E	F
18309	#6-850	1/4-3/4	#6-850	1/4-3/4	1/2	6 1/8	3	3	1 3/4	1 3/4
18310	4/0-1500	1/2-1	#6-850	1/4-3/4	1/2	6 3/8	3 1/4	3	2	1 3/4
18311	4/0-1500	1/2-1	4/0-1500	1/2-1	1/2	6 5/8	3 1/4	3 1/4	2	2
18312	850-2000	3/4-1 1/2	#6-850	1/4-3/4	1/2	7 1/8	4	3	2 3/4	1 3/4
18313	850-2000	3/4-1 1/2	4/0-1500	1/2-1	1/2	7 3/8	4	3 1/4	2 3/4	2
18314	850-2000	3/4-1 1/2	850-2000	3/4-1 1/2	1/2	8 1/8	4	4	2 3/4	2 3/4

Example for Ordering: - #15227 Royal Type LM Tee Connector 1-1/4" IPS Run to 750 MCM Tap.

Silicon Bronze bolts, nuts and lockwashers are standard.  
Certified dimension prints will be furnished on request.  
Special or unlisted sizes readily furnished.

NOTE: 1/2" bolts are furnished as STANDARD for 1/2" IPS tubing and larger, and 500 MCM

Db-Coupler

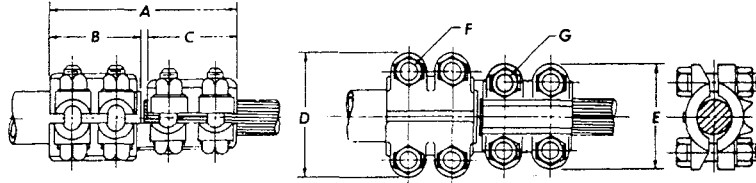
## ROYAL SWITCHGEAR MANUFACTURING CO.

3995 Pine Lane SE • Bessemer, AL 35023 • (205) 426-4090 • FAX (205) 426-4095

# Db-6 POWER CONNECTORS

## END CONNECTOR

### TYPE MRC



Catalog No.	Conductor Size		Dimensions in Inches						
	Run	Tap	A	B	C	D	E	F	G
18040	1/2 IPS	#6.250	5 1/4	2 3/8	2 3/4	2 5/32	2 1/8	3/8	3/8
18041	1/2 IPS	1/0.500	6 1/4	2 3/8	3 3/4	2 5/32	2 1/2	3/8	1/2
18090	3/4 IPS	#6.250	5 1/4	2 3/8	2 3/4	2 3/4	2 1/8	1/2	3/8
18091	3/4 IPS	1/0.500	6 1/4	2 3/8	3 3/4	2 3/4	2 1/2	1/2	1/2
18092	1 IPS	#6.250	5 1/4	2 3/8	2 3/4	3	2 1/8	1/2	3/8
18093	1 IPS	1/0.500	6 1/4	2 3/8	3 3/4	3	2 1/2	1/2	1/2
18094	1 IPS	4/0.1000	7	2 3/8	4 1/2	3	2 7/8	1/2	1/2
18095	1 1/4 IPS	#6.250	5 3/8	2 1/2	2 3/4	3 3/8	2 1/8	1/2	3/8
18096	1 1/4 IPS	1/0.500	5 3/8	2 1/2	3 3/4	3 3/8	2 1/2	1/2	1/2
18097	1 1/4 IPS	4/0.1000	7 1/8	2 1/2	4 1/2	3 3/8	2 7/8	1/2	1/2
18098	1 1/2 IPS	#6.250	5 5/8	2 3/4	2 3/4	3 19/32	2 1/8	1/2	3/8
18099	1 1/2 IPS	1/0.500	5 5/8	2 3/4	3 3/4	3 19/32	2 1/2	1/2	1/2
18100	1 1/2 IPS	4/0.1000	7 3/8	2 3/4	4 1/2	3 19/32	2 7/8	1/2	1/2
18101	2 IPS	1/0.500	6 7/8	3	3 3/4	4 1/8	2 1/2	1/2	1/2
18102	2 IPS	4/0.1000	7 5/8	3	4 1/2	4 1/8	2 7/8	1/2	1/2
18103	2 IPS	500.2000	7 5/8	3	4 1/2	4 1/8	3 1/4	1/2	1/2
18104	2 1/2 IPS	1/0.500	7 1/8	3 1/4	3 3/4	4 5/8	2 1/2	1/2	1/2
18105	2 1/2 IPS	4/0.1000	7 7/8	3 1/4	4 1/2	4 5/8	2 7/8	1/2	1/2
18106	2 1/2 IPS	500.2000	7 7/8	3 1/4	4 1/2	4 5/8	3 1/4	1/2	1/2
18107	3 IPS	1/0.500	7 3/8	3 1/2	3 3/4	5 3/8	2 1/2	5/8	1/2
18108	3 IPS	4/0.1000	8 1/8	3 1/2	4 1/2	5 3/8	2 7/8	5/8	1/2
18109	3 IPS	500.2000	8 1/8	3 1/2	4 1/2	5 3/8	3 1/4	5/8	1/2
18110	3 1/2 IPS	1/0.500	7 7/8	4	3 3/4	6 7/8	2 1/2	5/8	1/2
18111	3 1/2 IPS	4/0.1000	8 5/8	4	4 1/2	6 1/8	2 7/8	5/8	1/2
18112	3 1/2 IPS	500.2000	8 5/8	4	4 1/2	6 1/8	3 1/4	5/8	1/2
18113	4 IPS	1/0.500	7 7/8	4	3 3/4	6 5/8	2 1/2	5/8	1/2
18114	4 IPS	4/0.1000	8 5/8	4	4 1/2	6 5/8	2 7/8	5/8	1/2
18115	4 IPS	500.2000	8 5/8	4	4 1/2	6 5/8	3 1/4	5/8	1/2

Example for Ordering: - #18105 Royal Type MRC End Connector 2-1/2" IPS Run, 4/0-1000 MCM Tap.

Silicon Bronze bolts, nuts and lockwashers are standard.

Bolt heads are nested between ears on the casting which prevents the bolt head from turning, and permits one wrench installation.

Certified dimension prints will be furnished on request.

Special or unlisted sizes readily furnished.

NOTE: 1/2" bolts are furnished as STANDARD for 1/2" IPS tubing and larger, and 500 MCM cable and larger.

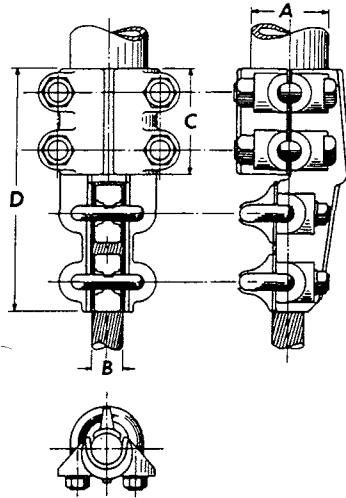
**ROYAL SWITCHGEAR MANUFACTURING CO.**

3995 Pine Lane SE • Bessemer, AL 35023 • (205) 426-4090 • FAX (205) 426-4095

# POWER CONNECTORS Db-7

## END CONNECTOR

### TYPE UCE



Individual keepers assembled captive on "U" bolts provide highest contact pressure.

IPS Run	Cable Size Tap		Cat. No.	Max. Dimensions in inches			
	Min.	Max.		A	B	C	D
1/2	#6	2/0	1583	.840	.420	1 1/2	4
1/2	#1	4/0	1584	.840	.533	1 1/2	4
1/2	1/0	300,000	1585	.840	.631	1 1/2	4
3/4	#6	2/0	1586	1.050	.420	1 1/2	4 1/4
3/4	#1	4/0	1587	1.050	.533	1 3/4	4 1/4
3/4	1/0	300,000	1588	1.050	.631	1 3/4	4 1/4
3/4	300,000	500,000	1589	1.050	.815	1 3/4	4 1/2
1	#6	2/0	1590	1.315	.420	1 3/4	4 1/4
1	#1	4/0	1591	1.315	.533	1 3/4	4 1/4
1	1/0	300,000	1592	1.315	.631	1 3/4	4 1/2
1	300,000	500,000	1593	1.315	.815	2	5 1/4
1	500,000	800,000	1594	1.315	1.031	2	5 3/4
1 1/4	#6	2/0	1595	1.660	.420	1 3/4	4 1/4
1 1/4	#1	4/0	1596	1.660	.533	1 3/4	4 1/4
1 1/4	1/0	300,000	1597	1.660	.631	1 3/4	4 1/2
1 1/4	300,000	500,000	1598	1.660	.815	2 1/4	5 1/2
1 1/4	500,000	800,000	1599	1.660	1.031	3 1/4	7
1 1/4	750,000	1,000,000	1600	1.660	1.153	3 1/4	7 1/2
1 1/2	#1	4/0	1601	1.900	.533	2	4 1/2
1 1/2	1/0	300,000	1602	1.900	.631	2	4 1/2
1 1/2	300,000	500,000	1603	1.900	.815	2	5 3/4
1 1/2	500,000	800,000	1604	1.900	1.031	3 1/4	7
1 1/2	750,000	1,000,000	1605	1.900	1.153	3 1/4	7 1/2
2	#1	4/0	1606	2.375	.533	2 1/4	4 3/4
2	1/0	300,000	1607	2.375	.631	2 1/4	4 3/4
2	300,000	500,000	1608	2.375	.815	2 1/2	6 1/4
2	500,000	800,000	1609	2.375	1.031	3 1/2	7 1/2
2	750,000	1,000,000	1610	2.375	1.153	3 1/2	7 1/2
2	1,000,000	1,500,000	1611	2.375	1.413	3 1/2	7 1/2
2 1/2	#1	4/0	1612	2.875	.533	2 1/4	4 3/4
2 1/2	1/0	300,000	1613	2.875	.631	2 1/4	4 3/4
2 1/2	300,000	500,000	1614	2.875	.815	2 1/2	6 1/4
2 1/2	500,000	800,000	1615	2.875	1.031	3 1/2	7 1/2
2 1/2	750,000	1,000,000	1616	2.875	1.153	3 1/2	7 1/2
2 1/2	1,000,000	1,500,000	1617	2.875	1.413	3 1/2	7 1/2
3	1/0	300,000	1618	3.500	.631	2 1/2	5
3	300,000	500,000	1619	3.500	.815	2 1/2	5
3	500,000	800,000	1620	3.500	1.031	2 1/2	5
3	750,000	1,000,000	1621	3.500	1.153	3 1/2	7 1/2
3	1,000,000	1,500,000	1622	3.500	1.413	3 1/2	7 1/2
3	1,500,000	2,000,000	1623	3.500	1.632	3 1/2	7 1/2
3 1/2	1/0	300,000	1624	4.000	.631	2 1/2	5
3 1/2	300,000	500,000	1625	4.000	.815	2 1/2	5
3 1/2	500,000	800,000	1626	4.000	1.031	2 1/2	5
3 1/2	750,000	1,000,000	1627	4.000	1.153	3 1/2	7 1/2
3 1/2	1,000,000	1,500,000	1628	4.000	1.413	4	8
3 1/2	1,500,000	2,000,000	1629	4.000	1.632	4	8

Example for ordering: - #1613 Royal Type UCE end connector 2 1/2" IPS tubing run, 1/0 to 300 MCM cable tap.

Silicon Bronze bolts, nuts and lockwashers are standard.

Bolt heads are nested between ears on the casting which prevents the bolt head from turning, and permits one wrench installation.

Certified dimension prints will be furnished on request.

Special or unlisted sizes readily furnished.

NOTE: 1/2" bolts are furnished as STANDARD for 1/2" IPS tubing and larger, and 500 MCM cable and larger.

NOTE: This connector will meet or exceed NEMA requirements for Class CF-2 Pub. SG-1.

Db-Coupler

## ROYAL SWITCHGEAR MANUFACTURING CO.

3995 Pine Lane SE • Bessemer, AL 35023 • (205) 426-4090 • FAX (205) 426-4095