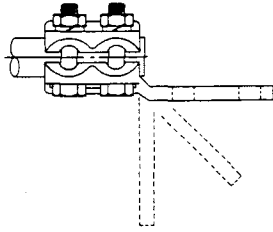


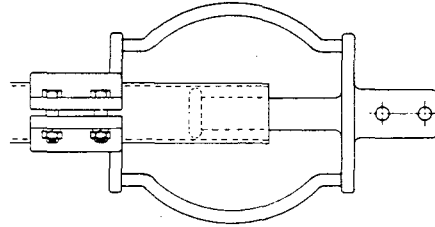
POWER CONNECTORS

TERMINAL LUGS PICTORIAL INDEX

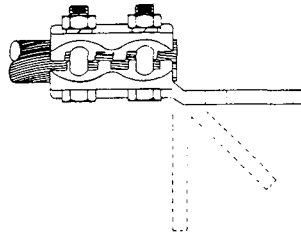
SECTION Ba



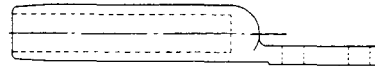
TYPE TF, TF-45, & TF-90 (Page Ba-1)



TYPE TLF (Page Ba-2)



TYPE CFR, CFR-45 & CFR-90 (Page Ba-3)



TYPE CFC, CFC-90, CFC-45 & CFC-15
(Page Ba-4)

Ba-Terminal

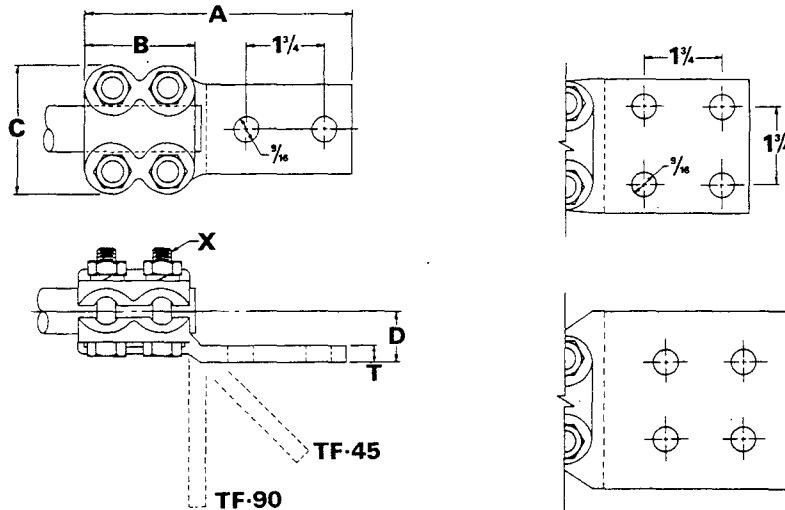
ROYAL SWITCHGEAR MANUFACTURING CO.

3995 Pine Lane SE • Bessemer, AL 35023 • (205) 426-4090 • FAX (205) 426-4095

POWER CONNECTORS Ba-1

TERMINAL LUG

TYPE TF



CAT. NO.	IPS SIZE	PAD SIZE	DIMENSIONS IN INCHES						X	
			A	B	C	D	T	NO.	SIZE	
TF-07-2N	3/4	2 x 3-1/4	6	2-1/2	2-7/8	1-1/16	3/8	4	1/2	
TF-07-3N	3/4	3 x 3-1/4	6	2-1/2	2-7/8	1-1/16	3/8	4	1/2	
TF-10-2N	1	2 x 3-1/4	6	2-1/2	3-3/8	1-3/16	7/16	4	1/2	
TF-10-3N	1	3 x 3-1/4	6	2-1/2	3-3/8	1-3/16	3/8	4	1/2	
TF-12-2N	1-1/4	2 x 3-1/4	6-1/2	3	3-3/4	1-9/16	5/8	4	1/2	
TF-12-3N	1-1/4	3 x 3-1/4	6-1/2	3	3-3/4	1-7/16	1/2	4	1/2	
TF-15-2N	1-1/2	2 x 3-1/4	6-1/2	3	4	1-13/16	3/4	4	1/2	
TF-15-3N	1-1/2	3 x 3-1/4	6-1/2	3	4	1-9/16	1/2	4	1/2	
TF-20-2N	2	2 x 3-1/4	6-1/2	3	4-1/2	2-3/16	7/8	4	1/2	
TF-20-3N	2	3 x 3-1/4	6-1/2	3	4-1/2	1-15/16	5/8	4	1/2	
TF-20-4N	2	4 x 4-1/4	7-1/2	3	4-1/2	1-13/16	1/2	4	1/2	
TF-25-3N	2-1/2	3 x 3-1/4	6-1/2	3	5	2-7/16	7/8	4	1/2	
TF-25-4N	2-1/2	4 x 4-1/4	7-1/2	3	5	2-3/16	5/8	4	1/2	
TF-30-3N	3	3 x 3-1/4	7	3-1/2	6	2-7/8	1	4	5/8	
TF-30-4N	3	4 x 4-1/4	8	3-1/2	6	2-5/8	3/4	4	5/8	
TF-35-3N	3-1/2	3 x 3-1/4	7-1/2	4	6-3/4	3-3/8	1-1/4	4	5/8	
TF-35-4N	3-1/2	4 x 4-1/4	8-1/2	4	6-3/4	3	7/8	4	5/8	
TF-40-3N	4	3 x 3-1/4	7-1/2	4	7-1/4	3-5/8	1-1/4	4	5/8	
TF-40-4N	4	4 x 4-1/4	8-1/2	4	7-1/4	3-3/8	1	4	5/8	
TF-50-4N	5	4 x 4-1/4	9-3/4	5-1/4	8-1/2	4-1/8	1-1/4	6	5/8	
TF-60-4N	6	4 x 4-1/4	9-3/4	5-1/4	9-5/8	4-15/16	1-1/2	6	5/8	

Example for Ordering: Royal TF-35-4N Aluminum Terminal Lug for 3-1/2" IPS Aluminum Tubing, 4"x4-1/4" NEMA 4 hole pad.

Angle Connectors can be supplied by adding -45° or -90° to the catalog number; Example: TF-35-4N-90°.

Center Formed Pads may be obtained by adding -C to the catalog number; Example: TF-35-4N-C.

Ba-1 Terminal

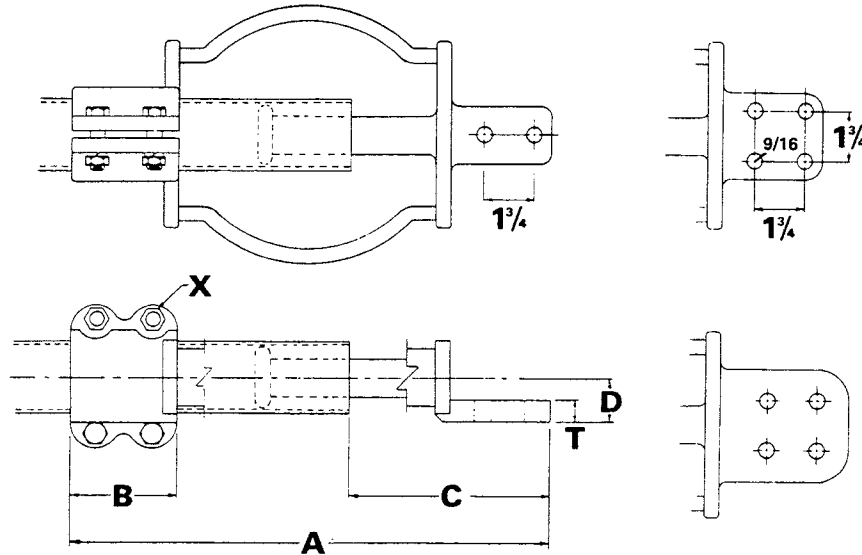
ROYAL SWITCHGEAR MANUFACTURING CO.

3995 Pine Lane SE • Bessemer, AL 35023 • (205) 426-4090 • FAX (205) 426-4095

Ba-2 POWER CONNECTORS

EXPANSION TERMINAL LUG

TYPE TLF



CAT. NO.	IPS SIZE	PAD SIZE	DIMENSIONS IN INCHES						X	
			A	B	C	D	T	NO.	SIZE	
TLF-07-2N	3/4	2 x 3-1/4	13	3-1/4	6-1/2	3/4	3/8	4	1/2	
TLF-07-3N	3/4	3 x 3-1/4	13	3-1/4	6-1/2	3/4	3/8	4	1/2	
TLF-10-2N	1	2 x 3-1/4	13	3-1/4	6-1/2	1	7/16	4	1/2	
TLF-10-3N	1	3 x 3-1/4	13	3-1/4	6-1/2	1	3/8	4	1/2	
TLF-12-2N	1-1/4	2 x 3-1/4	13-1/2	3-3/4	6-1/2	1-1/8	5/8	4	1/2	
TLF-12-3N	1-1/4	3 x 3-1/4	13-1/2	3-3/4	6-1/2	1-1/8	1/2	4	1/2	
TLF-15-2N	1-1/2	2 x 3-1/4	13-1/2	3-3/4	6-1/2	1-1/4	3/4	4	1/2	
TLF-15-3N	1-1/2	3 x 3-1/4	13-1/2	3-3/4	6-1/2	1-1/4	1/2	4	1/2	
TLF-20-2N	2	2 x 3-1/4	13-1/2	3-3/4	6-1/2	1-7/16	7/8	4	1/2	
TLF-20-3N	2	3 x 3-1/4	13-1/2	3-3/4	6-1/2	1-7/16	5/8	4	1/2	
TLF-20-4N	2	4 x 4-1/4	14-1/2	3-3/4	7-1/2	1-7/16	1/2	4	1/2	
TLF-25-3N	2-1/2	3 x 3-1/4	13-1/2	3-3/4	6-1/2	1-11/16	7/8	4	1/2	
TLF-25-4N	2-1/2	4 x 4-1/4	14-1/2	3-3/4	7-1/2	1-11/16	5/8	4	1/2	
TLF-30-3N	3	3 x 3-1/4	13-3/4	4	6-1/2	2	1	4	5/8	
TLF-30-4N	3	4 x 4-1/4	14-3/4	4	7-1/2	2	3/4	4	5/8	
TLF-35-3N	3-1/2	3 x 3-1/4	13-3/4	4	6-1/2	2-1/4	1-1/4	4	5/8	
TLF-35-4N	3-1/2	4 x 4-1/4	14-3/4	4	7-1/2	2-1/4	7/8	4	5/8	
TLF-40-3N	4	3 x 3-1/4	13-3/4	4	6-1/2	2-1/2	1-1/4	4	5/8	
TLF-40-4N	4	4 x 4-1/4	14-3/4	4	7-1/2	2-1/2	1	4	5/8	
TLF-50-4N	5	4 x 4-1/4	16	5-1/4	7-1/2	3-1/16	1-1/4	6	5/8	
TLF-60-4N	6	4 x 4-1/4	16	5-1/4	7-1/2	3-9/16	1-1/2	6	5/8	

Example for Ordering: Royal TLF-10-2N Aluminum Expansion Terminal Lug for 1" IPS Aluminum Tubing to 2"x3-1/4" NEMA 2 hole pad.
Center Formed Pads may be obtained by adding -C to the catalog number; Example: TLF-10-2N-C.

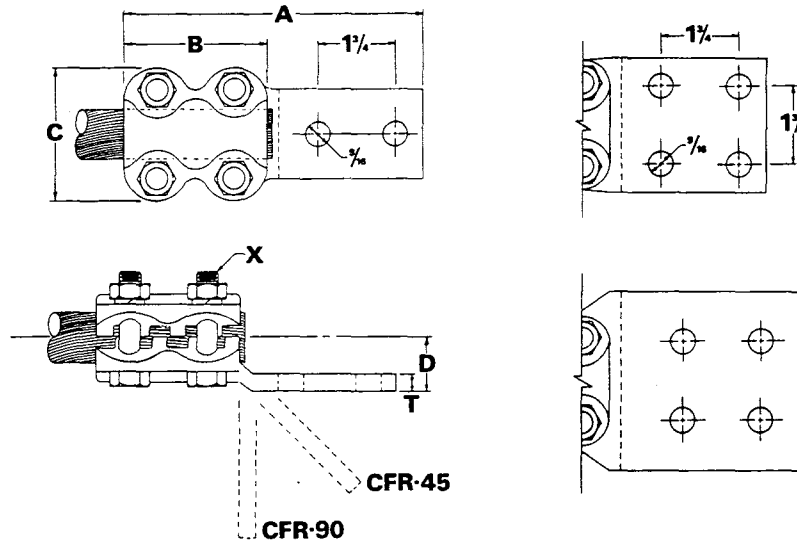
ROYAL SWITCHGEAR MANUFACTURING CO.

3995 Pine Lane SE • Bessemer, AL 35023 • (205) 426-4090 • FAX (205) 426-4095

POWER CONNECTORS Ba-3

TERMINAL LUG

TYPE CFR



CAT. NO.	CONDUCTOR SIZE		PAD SIZE	DIMENSIONS IN INCHES					X	
	ALUM	ACSR		A	B	C	D	T	NO.	SIZE
CFR-06-2N	6-250	6-4/0	2 x 3-1/4	6	2-1/2	2-1/4	1	3/8	4	1/2
CFR-08-2N	250-400	4/0-336	2 x 3-1/4	6	2-1/2	2-1/2	1-1/16	3/8	4	1/2
CFR-08-3N	250-400	4/0-336	3 x 3-1/4	6	2-1/2	2-1/2	1-1/16	3/8	4	1/2
CFR-09-2N	350-600	336-477	2 x 3-1/4	6-3/4	3-1/4	2-5/8	1-1/16	3/8	4	1/2
CFR-09-3N	350-600	336-477	3 x 3-1/4	6-3/4	3-1/4	2-5/8	1-1/16	3/8	4	1/2
CFR-11-2N	600-900	556-715	2 x 3-1/4	6-3/4	3-1/4	2-7/8	1-1/16	7/16	4	1/2
CFR-11-3N	600-900	556-715	3 x 3-1/4	6-3/4	3-1/4	2-7/8	1-1/16	3/8	4	1/2
CFR-13-2N	715-1033	636-954	2 x 3-1/4	6-3/4	3-1/4	3	1-3/16	7/16	4	1/2
CFR-13-3N	715-1033	636-954	3 x 3-1/4	6-3/4	3-1/4	3	1-3/16	7/16	4	1/2
CFR-13-4N	715-1033	636-954	4 x 4-1/4	7-3/4	3-1/4	3	1-3/16	3/8	4	1/2
CFR-14-3N	954-1431	795-1272	3 x 3-1/4	7	3-1/2	3-1/4	1-5/16	1/2	4	1/2
CFR-14-4N	954-1431	795-1272	4 x 4-1/4	8	3-1/2	3-1/4	1-5/16	3/8	4	1/2
CFR-16-3N	1272-1750	1113-1590	3 x 3-1/4	7	3-1/2	3-5/8	1-1/2	9/16	4	5/8
CFR-16-4N	1272-1750	1113-1590	4 x 4-1/4	8	3-1/2	3-5/8	1-1/2	7/16	4	5/8
CFR-17-3N	1590-2000	1.453- 1.630 Dia.	3 x 3-1/4	7	3-1/2	3-7/8	1-9/16	9/16	4	5/8
CFR-17-4N	1590-2000	1.453- 1.630 Dia.	4 x 4-1/4	8	3-1/2	3-7/8	1-9/16	7/16	4	5/8
CFR-18-3N	2000-2500	1.630- 1.823 Dia.	3 x 3-1/4	7	3-1/2	4	1-5/8	5/8	4	5/8
CFR-18-4N	2000-2500	1.630- 1.823 Dia.	4 x 4-1/4	8	3-1/2	4	1-5/8	1/2	4	5/8

Example for Ordering: Royal CFR-11-3N Aluminum Terminal Lug for 600-900 MCM Aluminum or 556-715 ACSR Cable, 3"x3-1/4" NEMA 4 hole pad.

Angle Connectors can be supplied by adding -45° or -90° to the catalog number; Example: CFR-11-3N-45°.

Ba-Terminal

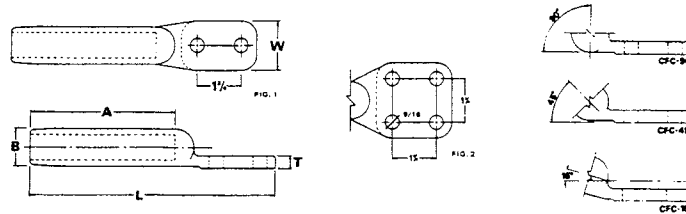
ROYAL SWITCHGEAR MANUFACTURING CO.

3995 Pine Lane SE • Bessemer, AL 35023 • (205) 426-4090 • FAX (205) 426-4095

Ba-4 POWER CONNECTORS

COMPRESSION TERMINAL LUG

TYPE CFC



ACSR AWG or MCM										ALUM AWG or MCM				CAT. NO.	FIG. NO.	MAX. DIM.				RECOMMENDED DIE			NO.
18	24	36	30	36	48	64	84	18	37	37	61	61	127			A	B	T	L	ALCOA	BURNBY	CRIMPE	
336		300		336				336	350	350	400			CFC-740-2N	1	5-7/8	1.25	1/2	9-3/4	2	317		
		336		336				336	350	350	400			CFC-740-3N	2				3	20AH	426	2	
397	397	397	336		477			477	450	477	500			CFC-814-2N	1	5-7/8	1.25	1/2	9-3/4	2	317		
477		397	336		477			477	450	477	500			CFC-814-3N	2				3	20AH	426	2	
		477	477		477			477	477	550	550			CFC-880-2N	1	5-3/4	1.50	1/2	9-3/4	2	24AH	468	
		477	477		477			477	477	550	550			CFC-880-3N	2				3	24AH	608	2	
556	556	556	477		556			600	600	600	600			CFC-927-2N	1	5-3/4	1.50	1/2	9-3/4	2	24AH	468	
		556	477		556			600	600	600	600			CFC-927-3N	2				3	24AH	608	2	
636	605	625	556	605	636			715	650	650	650			CFC-1019-2N	1	6-1/4	1.68	1/2	10-1/4	2	27AH	342	
636	636	636	636	636	636			715	700	700	750			CFC-1019-3N	2				3	27AH	342	2	
666	666	666	666	666	666			715	715	715	715			CFC-1019-3N	2				3	27AH	342	2	
	795	795	715	795	795	715		795	795	795	795		900	CFC-1111-2N	1	6	1.875	5/8	10-1/4	2	30AH	282	578
		795	715	795	795	795		795	795	795	795		900	CFC-1111-3N	2				3	30AH	319	578	
			795	854	900	874		954	954	954	954		1000	CFC-1196-2N	1	6	1.875	5/8	10-1/4	2	292	578	
			795	854	900	874		954	954	954	954		1000	CFC-1196-3N	2				3	30AH	319	578	
				1033	1033			1113	1100	1100	1100			CFC-1262-2N	2	7	2.125	5/8	11-1/4	3	34AH	422	
				1033	1033			1113	1100	1100	1100			CFC-1262-4N	2				4	34AH	575	4	
				1192	1113			1272	1200	1200	1200			CFC-1314-2N	2	7	2.125	5/8	11-1/4	3	34AH	422	
				1192	1113			1272	1200	1200	1200			CFC-1314-4N	2				4	34AH	575	4	
				1272	1192			1351	1400	1400	1400			CFC-1412-2N	2	7-7/8	2.25	11/16	12-1/4	3	36AH	478	
				1272	1192			1351	1400	1400	1400			CFC-1412-4N	2				4	36AH	648	4	
				1431	1251			1510	1500	1500	1500		1600	CFC-1466-2N	2	7-13/16	2.375	11/16	12-1/4	3	38AH	728	
				1431	1251			1510	1500	1500	1500		1600	CFC-1466-4N	2				4	38AH	684	4	
				1590	1510			1700	1700	1700	1700			CFC-1548-2N	2	8-3/4	2.5	3/4	13-1/4	3	40AH	728	
				1590	1510			1700	1700	1700	1700			CFC-1548-4N	2				4	40AH	728	4	
				1780	1780			1900	1900	1900	1900		2000	CFC-1681-2N	2	10-7/16	2.63	3/4	15	3	42AH		4
				1780	1780			1900	1900	1900	1900		2000	CFC-1681-4N	2				4	42AH		4	
				2167	2167			2300	2300	2300	2300		2400	CFC-1781-2N	2	10-7/16	2.63	3/4	15	3	42AH		4
				2167	2167			2300	2300	2300	2300		2400	CFC-1781-4N	2				4	42AH		4	
				2156	2156			2300	2300	2300	2300		2400	CFC-1722-2N	2	10-3/8	2.75	3/4	15	3	44AH		4
				2156	2156			2300	2300	2300	2300		2400	CFC-1722-4N	2				4	44AH		4	
				2167	2167			2500	2500	2500	2500		2600	CFC-1822-2N	2	10-3/8	2.75	3/4	15	3	44AH		4
				2167	2167			2500	2500	2500	2500		2600	CFC-1822-4N	2				4	44AH		4	
				2515	2515			2500	2500	2500	2500		2600	CFC-1996-2N	2	10-1/4	3.0	3/4	15	3	48AH		4
				2515	2515			2500	2500	2500	2500		2600	CFC-1996-4N	2				4	48AH		4	
								3000	3000	3000	3000		3000	CFC-2158-2N	2	10-1/4	3.0	3/4	15	3	48AH		4
								3000	3000	3000	3000		3000	CFC-2158-4N	2				4	48AH		4	

Example for Ordering: Royal CFC-1111-2N Aluminum Compression Terminal Lug for 715 MCM 26/7 ACSR to 3" x 3" NEMA 4 hole pad, for use with Alcoa Die 30 AH Angle Connectors can be supplied by adding -45° or -90° to the catalog number. Example: CFC-1111-2N-90°

ROYAL SWITCHGEAR MANUFACTURING CO.

3995 Pine Lane SE • Bessemer, AL 35023 • (205) 426-4090 • FAX (205) 426-4095