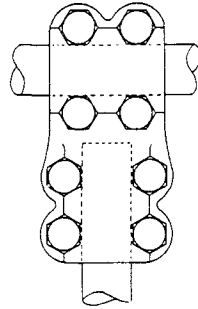


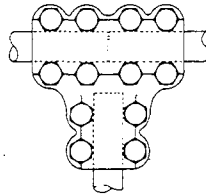
POWER CONNECTORS

TEE CONNECTORS PICTORIAL INDEX

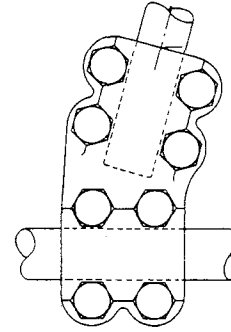
SECTION Aa



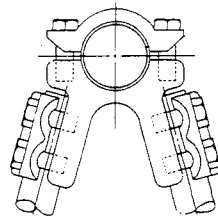
TYPE TMT (Page Aa-1)



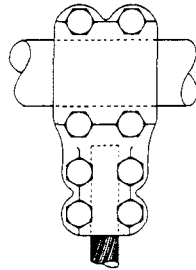
TYPE TTMT (Page Aa-2)



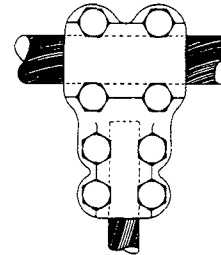
TYPE TMTA (Page Aa-3)



TYPE TMTV (Page Aa-4)



TYPE TMCR (Page Aa-5,6)



TYPE CMCR (Page Aa-7,8)

Aa-108 Conn

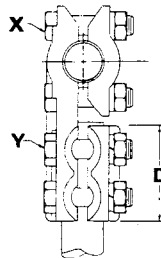
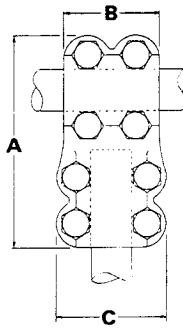
ROYAL SWITCHGEAR MANUFACTURING CO.

3995 Pine Lane SE • Bessemer, AL 35023 • (205) 426-4090 • FAX (205) 426-4095

POWER CONNECTORS

Aa-1

TEE CONNECTOR TYPE TMT



CAT. NO.	IPS SIZE		DIMENSIONS IN INCHES				X		Y	
	RUN	TAP	A	B	C	D	NO.	DIA.	NO.	DIA.
TMT-0707	3/4	3/4	5-5/8	2-1/2	2-7/8	2-1/2	4	1/2	4	1/2
TMT-1007	1	3/4	6-1/8	2-1/2	2-7/8	2-1/2	4	1/2	4	1/2
TMT-1010	1	1	6-1/8	2-1/2	3-3/8	2-1/2	4	1/2	4	1/2
TMT-1207	1-1/4	3/4	6-1/2	3	2-7/8	2-1/2	4	1/2	4	1/2
TMT-1210	1-1/4	1	6-1/2	3	3-3/8	2-1/2	4	1/2	4	1/2
TMT-1212	1-1/4	1-1/4	7	3	3-3/4	3	4	1/2	4	1/2
TMT-1507	1-1/2	3/4	6-3/4	3	2-7/8	2-1/2	4	1/2	4	1/2
TMT-1510	1-1/2	1	6-3/4	3	3-3/8	2-1/2	4	1/2	4	1/2
TMT-1512	1-1/2	1-1/4	7-1/4	3	3-3/4	3	4	1/2	4	1/2
TMT-1515	1-1/2	1-1/2	7-1/4	3	4	3	4	1/2	4	1/2
TMT-2010	2	1	7-1/4	3	3-3/8	2-1/2	4	1/2	4	1/2
TMT-2012	2	1-1/4	7-3/4	3	3-3/4	3	4	1/2	4	1/2
TMT-2015	2	1-1/2	7-3/4	3	4	3	4	1/2	4	1/2
TMT-2020	2	2	7-3/4	3	4-1/2	3	4	1/2	4	1/2
TMT-2510	2-1/2	1	7-3/4	3	3-3/8	2-1/2	4	1/2	4	1/2
TMT-2512	2-1/2	1-1/4	8-1/4	3	3-3/4	3	4	1/2	4	1/2
TMT-2515	2-1/2	1-1/2	8-1/4	3	4	3	4	1/2	4	1/2
TMT-2520	2-1/2	2	8-1/4	3	4-1/2	3	4	1/2	4	1/2
TMT-2525	2-1/2	2-1/2	8-1/4	3	5	3	4	1/2	4	1/2
TMT-3010	3	1	8-3/4	3-1/2	3-3/8	2-1/2	4	5/8	4	1/2
TMT-3012	3	1-1/4	9-1/4	3-1/2	3-3/4	3	4	5/8	4	1/2
TMT-3015	3	1-1/2	9-1/4	3-1/2	4	3	4	5/8	4	1/2
TMT-3020	3	2	9-1/4	3-1/2	4-1/2	3	4	5/8	4	1/2
TMT-3025	3	2-1/2	9-1/4	3-1/2	5	3	4	5/8	4	1/2
TMT-3030	3	3	9-3/4	3-1/2	6	3-1/2	4	5/8	4	5/8
TMT-3515	3-1/2	1-1/2	10	4	4	3	4	5/8	4	1/2
TMT-3520	3-1/2	2	10	4	4-1/2	3	4	5/8	4	1/2
TMT-3525	3-1/2	2-1/2	10	4	5	3	4	5/8	4	1/2
TMT-3530	3-1/2	3	10-1/2	4	6	3-1/2	4	5/8	4	5/8
TMT-3535	3-1/2	3-1/2	11	4	6-3/4	4	4	5/8	4	5/8
TMT-4020	4	2	10-1/2	4	4-1/2	3	4	5/8	4	1/2
TMT-4025	4	2-1/2	10-1/2	4	5	3	4	5/8	4	1/2
TMT-4030	4	3	11	4	6	3-1/2	4	5/8	4	5/8
TMT-4035	4	3-1/2	11-1/2	4	6-3/4	4	4	5/8	4	5/8
TMT-4040	4	4	11-1/2	4	7-1/4	4	4	5/8	4	5/8
TMT-5020	5	2	11-3/4	5-1/4	4-1/2	3	6	5/8	4	1/2
TMT-5025	5	2-1/2	11-3/4	5-1/4	5	3	6	5/8	4	1/2
TMT-5030	5	3	12-1/4	5-1/4	6	3-1/2	6	5/8	4	5/8
TMT-5035	5	3-1/2	12-3/4	5-1/4	6-3/4	4	6	5/8	4	5/8
TMT-5040	5	4	12-3/4	5-1/4	7-1/4	4	6	5/8	4	5/8
TMT-5050	5	5	14	5-1/4	8-1/2	5-1/4	6	5/8	6	5/8
TMT-6025	6	2-1/2	12-7/8	5-1/4	5	3	6	5/8	4	1/2
TMT-6030	6	3	13-3/8	5-1/4	6	3-1/2	6	5/8	4	5/8
TMT-6035	6	3-1/2	13-7/8	5-1/4	6-3/4	4	6	5/8	4	5/8
TMT-6040	6	4	13-7/8	5-1/4	7-1/4	4	6	5/8	4	5/8
TMT-6050	6	5	15-1/8	5-1/4	8-1/2	5-1/4	6	5/8	6	5/8
TMT-6060	6	6	15-1/8	5-1/4	9-5/8	5-1/4	6	5/8	6	5/8

Aa Tee Conn

Example for Ordering: Royal TMT-2020 Aluminum Tee Connector for 2" IPS Aluminum Tubing Run and Tap.

ROYAL SWITCHGEAR MANUFACTURING CO.

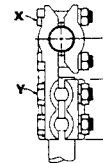
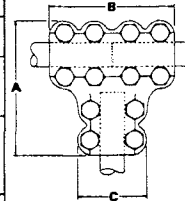
3995 Pine Lane SE • Bessemer, AL 35023 • (205) 426-4090 • FAX (205) 426-4095

Aa-2 POWER CONNECTORS

TEE COUPLER

TYPE TTMT

CAT. NO.	IPS SIZE		DIMENSIONS IN INCHES				X		Y	
	RUN	TAP	A	B	C	D	NO.	DIA.	NO.	DIA.
TTMT-0707	3/4	3/4	5-5/8	5-1/4	2-7/8	2-1/2	8	1/2	4	1/2
TTMT-1007	1	3/4	6-1/8	5-1/4	2-7/8	2-1/2	8	1/2	4	1/2
TTMT-1010	1	1	6-1/8	5-1/4	3-3/8	2-1/2	8	1/2	4	1/2
TTMT-1207	1-1/4	3/4	6-1/2	6-1/4	2-7/8	2-1/2	8	1/2	4	1/2
TTMT-1210	1-1/4	1	6-1/2	6-1/4	3-3/8	2-1/2	8	1/2	4	1/2
TTMT-1212	1-1/4	1-1/4	7	6-1/4	3-3/4	3	8	1/2	4	1/2
TTMT-1507	1-1/2	3/4	6-3/4	6-1/4	2-7/8	2-1/2	8	1/2	4	1/2
TTMT-1510	1-1/2	1	6-3/4	6-1/4	3-3/8	2-1/2	8	1/2	4	1/2
TTMT-1512	1-1/2	1-1/4	7-1/4	6-1/4	3-3/4	3	8	1/2	4	1/2
TTMT-1515	1-1/2	1-1/2	7-1/4	6-1/4	4	3	8	1/2	4	1/2
TTMT-2010	2	1	7-1/4	6-1/4	3-3/8	2-1/2	8	1/2	4	1/2
TTMT-2012	2	1-1/4	7-3/4	6-1/4	3-3/4	3	8	1/2	4	1/2
TTMT-2015	2	1-1/2	7-3/4	6-1/4	4	3	8	1/2	4	1/2
TTMT-2020	2	2	7-3/4	6-1/4	4-1/2	3	8	1/2	4	1/2
TTMT-2510	2-1/2	1	7-3/4	6-1/4	3-3/8	2-1/2	8	1/2	4	1/2
TTMT-2512	2-1/2	1-1/4	8-1/4	6-1/4	3-3/4	3	8	1/2	4	1/2
TTMT-2515	2-1/2	1-1/2	8-1/4	6-1/4	4	3	8	1/2	4	1/2
TTMT-2520	2-1/2	2	8-1/4	6-1/4	4-1/2	3	8	1/2	4	1/2
TTMT-2525	2-1/2	2-1/2	8-1/4	6-1/4	5	3	8	1/2	4	1/2
TTMT-3010	3	1	8-3/4	7-1/4	3-3/8	2-1/2	8	5/8	4	1/2
TTMT-3012	3	1-1/4	9-1/4	7-1/4	3-3/4	3	8	5/8	4	1/2
TTMT-3015	3	1-1/2	9-1/4	7-1/4	4	3	8	5/8	4	1/2
TTMT-3020	3	2	9-1/4	7-1/4	4-1/2	3	8	5/8	4	1/2
TTMT-3025	3	2-1/2	9-1/4	7-1/4	5	3	8	5/8	4	1/2
TTMT-3030	3	3	9-3/4	7-1/4	6	3-1/2	8	5/8	4	5/8
TTMT-3515	3-1/2	1-1/2	10	8-1/4	4	3	8	5/8	4	1/2
TTMT-3520	3-1/2	2	10	8-1/4	4-1/2	3	8	5/8	4	1/2
TTMT-3525	3-1/2	2-1/2	10	8-1/4	5	3	8	5/8	4	1/2
TTMT-3530	3-1/2	3	10-1/2	8-1/4	6	3-1/2	8	5/8	4	5/8
TTMT-3535	3-1/2	3-1/2	11	8-1/4	6-3/4	4	8	5/8	4	5/8
TTMT-4020	4	2	10-1/2	8-1/4	4-1/2	3	8	5/8	4	1/2
TTMT-4025	4	2-1/2	10-1/2	8-1/4	5	3	8	5/8	4	1/2
TTMT-4030	4	3	11	8-1/4	6	3-1/2	8	5/8	4	5/8
TTMT-4035	4	3-1/2	11-1/2	8-1/4	6-3/4	4	8	5/8	4	5/8
TTMT-4040	4	4	11-1/2	8-1/4	7-1/4	4	8	5/8	4	5/8
TTMT-5020	5	2	11-3/4	10-3/4	4-1/2	3	8	5/8	4	1/2
TTMT-5025	5	2-1/2	11-3/4	10-3/4	5	3	12	5/8	4	1/2
TTMT-5030	5	3	12-1/4	10-3/4	6	3-1/2	12	5/8	4	5/8
TTMT-5035	5	3-1/2	12-3/4	10-3/4	6-3/4	4	12	5/8	4	5/8
TTMT-5040	5	4	12-3/4	10-3/4	7-1/4	4	12	5/8	4	5/8
TTMT-5050	5	5	14	10-3/4	8-1/2	5-1/4	12	5/8	6	5/8
TTMT-6025	6	2-1/2	12-7/8	10-3/4	5	3	12	5/8	4	1/2
TTMT-6030	6	3	13-3/8	10-3/4	6	3-1/2	12	5/8	4	5/8
TTMT-6035	6	3-1/2	13-7/8	10-3/4	6-3/4	4	12	5/8	4	5/8
TTMT-6040	6	4	13-7/8	10-3/4	7-1/4	4	12	5/8	4	5/8
TTMT-6050	6	5	15-1/8	10-3/4	8-1/2	5-1/4	12	5/8	6	5/8
TTMT-6060	6	6	15-1/8	10-3/4	9-5/8	5-1/4	12	5/8	6	5/8



Example for Ordering: Royal TTMT-3020 Aluminum Tee Coupler for 3" IPS Aluminum Tubing Run to 2" IPS Aluminum Tubing Tap.

ROYAL SWITCHGEAR MANUFACTURING CO.

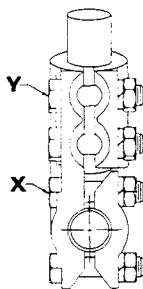
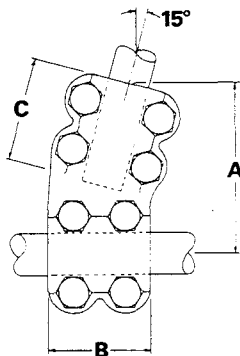
3995 Pine Lane SE • Bessemer, AL 35023 • (205) 426-4090 • FAX (205) 426-4095

POWER CONNECTORS

Aa-3

ANGLE TEE CONNECTOR

TYPE TMTA



CAT. NO.	IPS SIZE		DIMENSIONS IN INCHES			X		Y	
	RUN	TAP	A	B	C	NO.	DIA.	NO.	DIA.
TMTA-0707-15	3/4	3/4	4-3/16	2-1/2	2-1/2	4	1/2	4	1/2
TMTA-1007-15	1	3/4	4-7/16	2-1/2	2-1/2	4	1/2	4	1/2
TMTA-1010-15	1	1	4-7/16	2-1/2	2-1/2	4	1/2	4	1/2
TMTA-1207-15	1-1/4	3/4	4-5/8	3	2-1/2	4	1/2	4	1/2
TMTA-1210-15	1-1/4	1	4-5/8	3	2-1/2	4	1/2	4	1/2
TMTA-1212-15	1-1/4	1-1/4	5-1/8	3	3	4	1/2	4	1/2
TMTA-1507-15	1-1/2	3/4	4-3/4	3	2-1/2	4	1/2	4	1/2
TMTA-1510-15	1-1/2	1	4-3/4	3	2-1/2	4	1/2	4	1/2
TMTA-1512-15	1-1/2	1-1/4	5-1/4	3	3	4	1/2	4	1/2
TMTA-1515-15	1-1/2	1-1/2	5-1/4	3	3	4	1/2	4	1/2
TMTA-2010-15	2	1	5	3	2-1/2	4	1/2	4	1/2
TMTA-2012-15	2	1-1/4	5-1/2	3	3	4	1/2	4	1/2
TMTA-2015-15	2	1-1/2	5-1/2	3	3	4	1/2	4	1/2
TMTA-2020-15	2	2	5-1/2	3	3	4	1/2	4	1/2
TMTA-2510-15	2-1/2	1	5-1/4	3	2-1/2	4	1/2	4	1/2
TMTA-2512-15	2-1/2	1-1/4	5-3/4	3	3	4	1/2	4	1/2
TMTA-2515-15	2-1/2	1-1/2	5-3/4	3	3	4	1/2	4	1/2
TMTA-2520-15	2-1/2	2	5-3/4	3	3	4	1/2	4	1/2
TMTA-2525-15	2-1/2	2-1/2	5-3/4	3	3	4	1/2	4	1/2
TMTA-3010-15	3	1	5-13/16	3-1/2	2-1/2	4	5/8	4	1/2
TMTA-3012-15	3	1-1/4	6-5/16	3-1/2	3	4	5/8	4	1/2
TMTA-3015-15	3	1-1/2	6-5/16	3-1/2	3	4	5/8	4	1/2
TMTA-3020-15	3	2	6-5/16	3-1/2	3	4	5/8	4	1/2
TMTA-3025-15	3	2-1/2	6-5/16	3-1/2	3	4	5/8	4	1/2
TMTA-3030-15	3	3	6-13/16	3-1/2	3-1/2	4	5/8	4	5/8
TMTA-3515-15	3-1/2	1-1/2	6-3/4	4	3	4	5/8	4	1/2
TMTA-3520-15	3-1/2	2	6-3/4	4	3	4	5/8	4	1/2
TMTA-3525-15	3-1/2	2-1/2	6-3/4	4	3	4	5/8	4	1/2
TMTA-3530-15	3-1/2	3	7-1/4	4	3-1/2	4	5/8	4	5/8
TMTA-3535-15	3-1/2	3-1/2	7-3/4	4	4	4	5/8	4	5/8
TMTA-4020-15	4	2	7	4	3	4	5/8	4	1/2
TMTA-4025-15	4	2-1/2	7	4	3	4	5/8	4	1/2
TMTA-4030-15	4	3	7-1/2	4	3-1/2	4	5/8	4	5/8
TMTA-4035-15	4	3-1/2	8	4	4	4	5/8	4	5/8
TMTA-4040-15	4	4	8	4	4	4	5/8	4	5/8
TMTA-5020-15	5	2	7-13/16	5-1/4	3	6	5/8	4	1/2
TMTA-5025-15	5	2-1/2	7-13/16	5-1/4	3	6	5/8	4	1/2
TMTA-5030-15	5	3	8-5/16	5-1/4	3-1/2	6	5/8	4	5/8
TMTA-5035-15	5	3-1/2	8-3/4	5-1/4	4	6	5/8	4	5/8
TMTA-5040-15	5	4	8-3/4	5-1/4	4	6	5/8	4	5/8
TMTA-5050-15	5	5	10	5-1/4	5-1/4	6	5/8	6	5/8
TMTA-6025-15	6	2-1/2	8-3/8	5-1/4	3	6	5/8	4	1/2
TMTA-6030-15	6	3	8-7/8	5-1/4	3-1/2	6	5/8	4	5/8
TMTA-6035-15	6	3-1/2	9-5/16	5-1/4	4	6	5/8	4	5/8
TMTA-6040-15	6	4	9-5/16	5-1/4	4	6	5/8	4	5/8
TMTA-6050-15	6	5	10-9/16	5-1/4	5-1/4	6	5/8	6	5/8
TMTA-6060-15	6	6	10-9/16	5-1/4	5-1/4	6	5/8	6	5/8

Aa-Tee Conn

Example for Ordering: Royal TMTA-5030-15 Aluminum Angle Tee Connector, 15°, for 5" IPS Aluminum Tubing Run to 3" IPS Aluminum Tubing Tap.

ROYAL SWITCHGEAR MANUFACTURING CO.

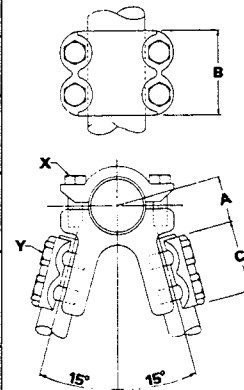
3995 Pine Lane SE • Bessemer, AL 35023 • (205) 426-4090 • FAX (205) 426-4095

Aa-4 POWER CONNECTORS

“V” TAP CONNECTOR

TYPE TMTV

CAT. NO.	IPS SIZE		DIMENSIONS IN INCHES			X		Y	
	RUN	TAP	A	B	C	NO.	DIA.	NO.	DIA.
TMTV-0707-15	3/4	3/4	1	2-1/2	2-1/2	4	1/2	4	1/2
TMTV-1007-15	1	3/4	1-1/16	2-1/2	2-1/2	4	1/2	4	1/2
TMTV-1010-15	1	1	1-1/16	2-1/2	2-1/2	4	1/2	4	1/2
TMTV-1207-15	1-1/4	3/4	1-1/4	3	2-1/2	4	1/2	4	1/2
TMTV-1210-15	1-1/4	1	1-1/4	3	2-1/2	4	1/2	4	1/2
TMTV-1212-15	1-1/4	1-1/4	1-1/4	3	3	4	1/2	4	1/2
TMTV-1507-15	1-1/2	3/4	1-3/8	3	2-1/2	4	1/2	4	1/2
TMTV-1510-15	1-1/2	1	1-3/8	3	2-1/2	4	1/2	4	1/2
TMTV-1512-15	1-1/2	1-1/4	1-3/8	3	3	4	1/2	4	1/2
TMTV-1515-15	1-1/2	1-1/2	1-3/8	3	3	4	1/2	4	1/2
TMTV-2010-15	2	1	1-11/16	3	2-1/2	4	1/2	4	1/2
TMTV-2012-15	2	1-1/4	1-11/16	3	3	4	1/2	4	1/2
TMTV-2015-15	2	1-1/2	1-11/16	3	3	4	1/2	4	1/2
TMTV-2020-15	2	2	1-11/16	3	3	4	1/2	4	1/2
TMTV-2510-15	2-1/2	1	1-15/16	3	2-1/2	4	1/2	4	1/2
TMTV-2512-15	2-1/2	1-1/4	1-15/16	3	3	4	1/2	4	1/2
TMTV-2515-15	2-1/2	1-1/2	1-15/16	3	3	4	1/2	4	1/2
TMTV-2520-15	2-1/2	2	1-15/16	3	3	4	1/2	4	1/2
TMTV-2525-15	2-1/2	2-1/2	1-15/16	3	3	4	1/2	4	1/2
TMTV-3010-15	3	1	2-5/16	3-1/2	2-1/2	4	5/8	4	1/2
TMTV-3012-15	3	1-1/4	2-5/16	3-1/2	3	4	5/8	4	1/2
TMTV-3015-15	3	1-1/2	2-5/16	3-1/2	3	4	5/8	4	1/2
TMTV-3020-15	3	2	2-5/16	3-1/2	3	4	5/8	4	1/2
TMTV-3025-15	3	2-1/2	2-5/16	3-1/2	3	4	5/8	4	1/2
TMTV-3030-15	3	3	2-5/16	3-1/2	3-1/2	4	5/8	4	5/8
TMTV-3515-15	3-1/2	1-1/2	2-9/16	4	3	4	5/8	4	1/2
TMTV-3520-15	3-1/2	2	2-9/16	4	3	4	5/8	4	1/2
TMTV-3525-15	3-1/2	2-1/2	2-9/16	4	3	4	5/8	4	1/2
TMTV-3530-15	3-1/2	3	2-9/16	4	3-1/2	4	5/8	4	5/8
TMTV-3535-15	3-1/2	3-1/2	2-9/16	4	4	4	5/8	4	5/8
TMTV-4020-15	4	2	2-7/8	4	3	4	5/8	4	1/2
TMTV-4025-15	4	2-1/2	2-7/8	4	3	4	5/8	4	1/2
TMTV-4030-15	4	3	2-7/8	4	3-1/2	4	5/8	4	5/8
TMTV-4035-15	4	3-1/2	2-7/8	4	4	4	5/8	4	5/8
TMTV-4040-15	4	4	2-7/8	4	4	4	5/8	4	5/8
TMTV-5020-15	5	2	3-3/8	5-1/4	3	6	5/8	4	1/2
TMTV-5025-15	5	2-1/2	3-3/8	5-1/4	3	6	5/8	4	1/2
TMTV-5030-15	5	3	3-3/8	5-1/4	3-1/2	6	5/8	4	5/8
TMTV-5035-15	5	3-1/2	3-3/8	5-1/4	4	6	5/8	4	5/8
TMTV-5040-15	5	4	3-3/8	5-1/4	4	6	5/8	4	5/8
TMTV-5050-15	5	5	3-3/8	5-1/4	5-1/4	6	5/8	6	5/8
TMTV-6025-15	6	2-1/2	3-15/16	5-1/4	3	6	5/8	4	1/2
TMTV-6030-15	6	3	3-15/16	5-1/4	3-1/2	6	5/8	4	5/8
TMTV-6035-15	6	3-1/2	3-15/16	5-1/4	4	6	5/8	4	5/8
TMTV-6040-15	6	4	3-15/16	5-1/4	4	6	5/8	4	5/8
TMTV-6050-15	6	5	3-15/16	5-1/4	5-1/4	6	5/8	6	5/8
TMTV-6060-15	6	6	3-15/16	5-1/4	5-1/4	6	5/8	6	5/8



Example for Ordering: Royal TMTV-5030-15 Aluminum Vee Tap Connector, 15°, for 5" IPS Aluminum Tubing Run to 3" IPS Aluminum Tubing Tap.

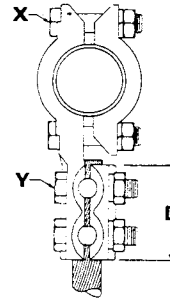
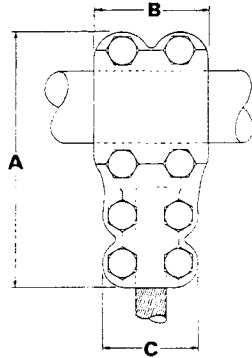
ROYAL SWITCHGEAR MANUFACTURING CO.

3995 Pine Lane SE • Bessemer, AL 35023 • (205) 426-4090 • FAX (205) 426-4095

POWER CONNECTORS **Aa-5**

TEE CONNECTOR

TYPE TMCR



Aa-1 Tee Conn

CAT. NO.	CONDUCTOR SIZE			DIMENSIONS IN INCHES				X		Y	
	RUN IPS	TAP		A	B	C	D	NO.	DIA.	NO.	DIA.
		AL	ACSR								
TMCR-0706	3/4	6-250	6-4/0	5-5/8	2-1/2	2-1/4	2-1/2	4	1/2	4	1/2
TMCR-0708	3/4	250-400	4/0-336	5-5/8	2-1/2	2-1/2	2-1/2	4	1/2	4	1/2
TMCR-0709	3/4	350-600	336-477	6-3/8	2-1/2	2-5/8	3-1/4	4	1/2	4	1/2
TMCR-1006	1	6-250	6-4/0	6-1/8	2-1/2	2-1/4	2-1/2	4	1/2	4	1/2
TMCR-1008	1	250-400	4/0-336	6-1/8	2-1/2	2-1/2	2-1/2	4	1/2	4	1/2
TMCR-1009	1	350-600	336-477	6-7/8	2-1/2	2-5/8	3-1/4	4	1/2	4	1/2
TMCR-1011	1	600-900	556-715	6-7/8	2-1/2	2-7/8	3-1/4	4	1/2	4	1/2
TMCR-1206	1-1/4	6-250	6-4/0	6-1/2	3	2-1/4	2-1/2	4	1/2	4	1/2
TMCR-1208	1-1/4	250-400	4/0-336	6-1/2	3	2-1/2	2-1/2	4	1/2	4	1/2
TMCR-1209	1-1/4	350-600	336-477	7-1/4	3	2-5/8	3-1/4	4	1/2	4	1/2
TMCR-1211	1-1/4	600-900	556-715	7-1/4	3	2-7/8	3-1/4	4	1/2	4	1/2
TMCR-1213	1-1/4	715-1033	636-954	7-1/4	3	3	3-1/4	4	1/2	4	1/2
TMCR-1506	1-1/2	6-250	6-4/0	6-3/4	3	2-1/4	2-1/2	4	1/2	4	1/2
TMCR-1508	1-1/2	250-400	4/0-336	6-3/4	3	2-1/2	2-1/2	4	1/2	4	1/2
TMCR-1509	1-1/2	350-600	336-477	7-1/2	3	2-5/8	3-1/4	4	1/2	4	1/2
TMCR-1511	1-1/2	600-900	556-715	7-1/2	3	2-7/8	3-1/4	4	1/2	4	1/2
TMCR-1513	1-1/2	715-1033	636-954	7-1/2	3	3	3-1/4	4	1/2	4	1/2
TMCR-1514	1-1/2	954-1431	795-1272	7-3/4	3	3-1/4	3-1/2	4	1/2	4	1/2
TMCR-2006	2	6-250	6-4/0	7-1/4	3	2-1/4	2-1/2	4	1/2	4	1/2
TMCR-2008	2	250-400	4/0-336	7-1/4	3	2-1/2	2-1/2	4	1/2	4	1/2
TMCR-2009	2	350-600	336-477	8	3	2-5/8	3-1/4	4	1/2	4	1/2
TMCR-2011	2	600-900	556-715	8	3	2-7/8	3-1/4	4	1/2	4	1/2
TMCR-2013	2	715-1033	636-954	8	3	3	3-1/4	4	1/2	4	1/2
TMCR-2014	2	954-1431	795-1272	8-1/4	3	3-1/4	3-1/2	4	1/2	4	1/2
TMCR-2016	2	1272-1750	1113-1590	8-1/4	3	3-5/8	3-1/2	4	1/2	4	5/8
TMCR-2509	2-1/2	350-600	336-477	8-1/2	3	2-5/8	3-1/4	4	1/2	4	1/2
TMCR-2511	2-1/2	600-900	556-715	8-1/2	3	2-7/8	3-1/4	4	1/2	4	1/2
TMCR-2513	2-1/2	715-1033	636-954	8-1/2	3	3	3-1/4	4	1/2	4	1/2
TMCR-2514	2-1/2	954-1431	795-1272	8-3/4	3	3-1/4	3-1/2	4	1/2	4	1/2
TMCR-2516	2-1/2	1272-1750	1113-1590	8-3/4	3	3-5/8	3-1/2	4	1/2	4	5/8

Example for Ordering: Royal TMCR-1508 Aluminum Tee Connector for 1-1/2" IPS Aluminum Tubing Run to 250-400 MCM Aluminum Cable or 4/0-336 MCM ACSR Tap.

ROYAL SWITCHGEAR MANUFACTURING CO.

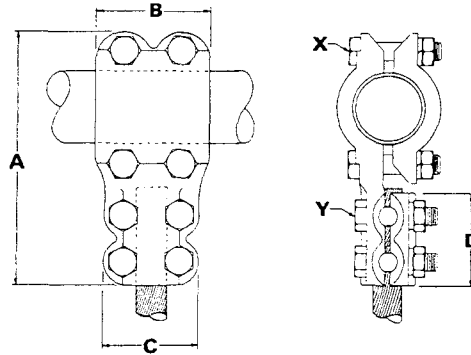
3995 Pine Lane SE • Bessemer, AL 35023 • (205) 426-4090 • FAX (205) 426-4095

Aa-6

POWER CONNECTORS

TEE CONNECTOR

TYPE TMCR



CAT. NO.	RUN IPS	CONDUCTOR SIZE		DIMENSIONS IN INCHES				X		Y	
		TAP		A	B	C	D	NO.	DIA.	NO.	DIA.
		AL	ACSR								
TMCR-3009	3	350-600	336-477	9-1/2	3-1/2	2-5/8	3-1/4	4	5/8	4	1/2
TMCR-3011	3	600-900	556-715	9-1/2	3-1/2	2-7/8	3-1/4	4	5/8	4	1/2
TMCR-3013	3	715-1033	636-954	9-1/2	3-1/2	3	3-1/4	4	5/8	4	1/2
TMCR-3014	3	954-1431	795-1272	9-3/4	3-1/2	3-1/4	3-1/2	4	5/8	4	1/2
TMCR-3016	3	1272-1750	1113-1590	9-3/4	3-1/2	3-5/8	3-1/2	4	5/8	4	5/8
TMCR-3511	3-1/2	600-900	556-715	10-1/4	4	2-7/8	3-1/4	4	5/8	4	1/2
TMCR-3513	3-1/2	715-1033	636-954	10-1/4	4	3	3-1/4	4	5/8	4	1/2
TMCR-3514	3-1/2	954-1431	795-1272	10-1/2	4	3-1/4	3-1/2	4	5/8	4	1/2
TMCR-3516	3-1/2	1272-1750	1113-1590	10-1/2	4	3-5/8	3-1/2	4	5/8	4	5/8
TMCR-3517	3-1/2	1590-2000	1.453 - 1.630 Dia.	10-1/2	4	3-7/8	3-1/2	4	5/8	4	5/8
TMCR-4011	4	600-900	556-715	10-3/4	4	2-7/8	3-1/4	4	5/8	4	1/2
TMCR-4013	4	715-1033	636-954	10-3/4	4	3	3-1/4	4	5/8	4	1/2
TMCR-4014	4	954-1431	795-1272	11	4	3-1/4	3-1/2	4	5/8	4	1/2
TMCR-4016	4	1272-1750	1113-1590	11	4	3-5/8	3-1/2	4	5/8	4	5/8
TMCR-4017	4	1590-2000	1.453 - 1.630 Dia.	11	4	3-7/8	3-1/2	4	5/8	4	5/8
TMCR-4018	4	2000-2500	1.630 - 1.823 Dia.	11	4	4	3-1/2	4	5/8	4	5/8
TMCR-5011	5	600-900	556-715	12	5-1/4	2-7/8	3-1/4	6	5/8	4	1/2
TMCR-5013	5	715-1033	636-954	12	5-1/4	3	3-1/4	6	5/8	4	1/2
TMCR-5014	5	954-1431	795-1272	12-1/4	5-1/4	3-1/4	3-1/2	6	5/8	4	1/2
TMCR-5016	5	1272-1750	1113-1590	12-1/4	5-1/4	3-5/8	3-1/2	6	5/8	4	5/8
TMCR-5017	5	1590-2000	1.453 - 1.630 Dia.	12-1/4	5-1/4	3-7/8	3-1/2	6	5/8	4	5/8
TMCR-5018	5	2000-2500	1.630 - 1.823 Dia.	12-1/4	5-1/4	4	3-1/2	6	5/8	4	5/8
TMCR-6011	6	600-900	556-715	13-1/8	5-1/4	2-7/8	3-1/4	6	5/8	4	1/2
TMCR-6013	6	715-1033	636-954	13-1/8	5-1/4	3	3-1/4	6	5/8	4	1/2
TMCR-6014	6	954-1431	795-1272	13-3/8	5-1/4	3-1/4	3-1/2	6	5/8	4	1/2
TMCR-6016	6	1272-1750	1113-1590	13-3/8	5-1/4	3-5/8	3-1/2	6	5/8	4	5/8
TMCR-6017	6	1590-2000	1.453 - 1.630 Dia.	13-3/8	5-1/4	3-7/8	3-1/2	6	5/8	4	5/8
TMCR-6018	6	2000-2500	1.630 - 1.823 Dia.	13-3/8	5-1/4	4	3-1/2	6	5/8	4	5/8

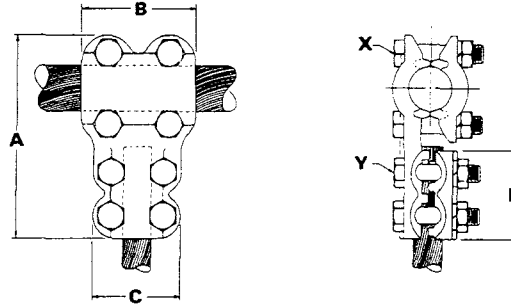
Example for Ordering: Royal TMCR-1508 Aluminum Tee Connector for 1-1/2" IPS Aluminum Tubing Run to 250-400 MCM Aluminum Cable or 4/0-336 MCM ACSR Tap.

ROYAL SWITCHGEAR MANUFACTURING CO.

3995 Pine Lane SE • Bessemer, AL 35023 • (205) 426-4090 • FAX (205) 426-4095

POWER CONNECTORS **Aa-7**

TEE CONNECTOR TYPE CMCR



CAT. NO.	CONDUCTOR SIZE				DIMENSIONS IN INCHES				X		Y	
	RUN		TAP		A	B	C	D	NO.	DIA.	NO.	DIA.
	AL	ACSR	AL	ACSR								
CMCR-0606	6-250	6-4/0	6-250	6-4/0	5	2-1/2	2-1/4	2-1/2	4	1/2	4	1/2
CMCR-0806	250-400	4/0-336	6-250	6-4/0	5-1/4	2-1/2	2-1/4	2-1/2	4	1/2	4	1/2
CMCR-0808	250-400	4/0-336	250-400	4/0-336	5-1/4	2-1/2	2-1/2	2-1/2	4	1/2	4	1/2
CMCR-0906	350-600	336-477	6-250	6-4/0	5-3/8	3-1/4	2-1/4	2-1/2	4	1/2	4	1/2
CMCR-0908	350-600	336-477	250-400	4/0-336	5-3/8	3-1/4	2-1/2	2-1/2	4	1/2	4	1/2
CMCR-0909	350-600	336-477	350-600	336-477	6-1/8	3-1/4	2-5/8	3-1/4	4	1/2	4	1/2
CMCR-1106	600-900	556-7175	6-250	6-4/0	5-5/8	3-1/4	2-1/4	2-1/2	4	1/2	4	1/2
CMCR-1108	600-900	556-7175	250-400	4/0-336	5-5/8	3-1/4	2-1/2	2-1/2	4	1/2	4	1/2
CMCR-1109	600-900	556-7175	350-600	336-477	6-3/8	3-1/4	2-5/8	3-1/4	4	1/2	4	1/2
CMCR-1111	600-900	556-7175	600-900	556-715	6-3/8	3-1/4	2-7/8	3-1/4	4	1/2	4	1/2
CMCR-1306	715-1033	636-954	6-250	6-4/0	5-3/4	3-1/4	2-1/4	2-1/2	4	1/2	4	1/2
CMCR-1308	715-1033	636-954	250-400	4/0-336	5-3/4	3-1/4	2-1/2	2-1/2	4	1/2	4	1/2
CMCR-1309	715-1033	636-954	350-600	336-477	6-1/2	3-1/4	2-5/8	3-1/4	4	1/2	4	1/2
CMCR-1311	715-1033	636-954	600-900	556-715	6-1/2	3-1/4	2-7/8	3-1/4	4	1/2	4	1/2
CMCR-1313	715-1033	636-954	715-1033	636-954	6-1/2	3-1/4	3	3-1/4	4	1/2	4	1/2
CMCR-1408	954-1431	795-1272	250-400	4/0-336	6	3-1/2	2-1/2	2-1/2	4	1/2	4	1/2
CMCR-1409	954-1431	795-1272	350-600	336-477	6-3/4	3-1/2	2-5/8	3-1/4	4	1/2	4	1/2
CMCR-1411	954-1431	795-1272	600-900	556-715	6-3/4	3-1/2	2-7/8	3-1/4	4	1/2	4	1/2
CMCR-1413	954-1431	795-1272	715-1033	636-954	6-3/4	3-1/2	3	3-1/4	4	1/2	4	1/2
CMCR-1414	954-1431	795-1272	954-1431	795-1272	7	3-1/2	3-1/4	3-1/2	4	1/2	4	1/2
CMCR-1609	1272-1750	1113-1590	350-600	336-477	7-1/8	3-1/2	2-5/8	3-1/4	4	5/8	4	1/2
CMCR-1611	1272-1750	1113-1590	600-900	556-715	7-1/8	3-1/2	2-7/8	3-1/4	4	5/8	4	1/2
CMCR-1613	1272-1750	1113-1590	715-1033	636-954	7-1/8	3-1/2	3	3-1/4	4	5/8	4	1/2
CMCR-1614	1272-1750	1113-1590	954-1431	795-1272	7-3/8	3-1/2	3-1/4	3-1/2	4	5/8	4	1/2
CMCR-1616	1272-1750	1113-1590	1272-1750	1113-1590	7-3/8	3-1/2	3-5/8	3-1/2	4	5/8	4	5/8

Example for Ordering: Royal CMCR-1414 Aluminum Tee Connector for 954-1431 MCM Aluminum or 795-1272 MCM ACSR Run and Tap.

Aa-Tee Conn

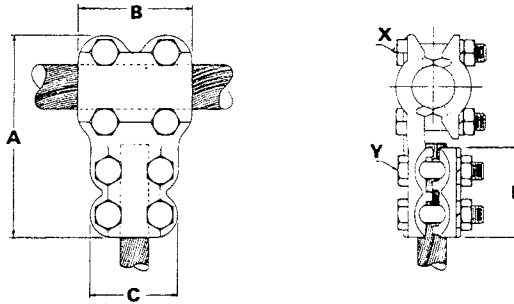
ROYAL SWITCHGEAR MANUFACTURING CO.

3995 Pine Lane SE • Bessemer, AL 35023 • (205) 426-4090 • FAX (205) 426-4095

Aa-8 POWER CONNECTORS

TEE CONNECTOR

TYPE CMCR



CAT. NO.	CONDUCTOR SIZE				DIMENSIONS IN INCHES				X		Y	
	RUN		TAP		A	B	C	D	NO.	DIA.	NO.	DIA.
	AL	ACSR	AL	ACSR								
CMCR-1709	1590-2000	1.453 - 1.630 Dia.	350-600	336-477	7-3/8	3-1/2	2-5/8	3-1/4	4	5/8	4	1/2
CMCR-1711	1590-2000	1.453 - 1.630 Dia.	600-900	556-715	7-3/8	3-1/2	2-7/8	3-1/4	4	5/8	4	1/2
CMCR-1713	1590-2000	1.453 - 1.630 Dia.	715-1033	636-954	7-3/8	3-1/2	3	3-1/4	4	5/8	4	1/2
CMCR-1714	1590-2000	1.453 - 1.630 Dia.	954-1431	795-1272	7-5/8	3-1/2	3-1/4	3-1/2	4	5/8	4	1/2
CMCR-1716	1590-2000	1.453 - 1.630 Dia.	1272-1750	1113-1590	7-5/8	3-1/2	3-5/8	3-1/2	4	5/8	4	5/8
CMCR-1717	1590-2000	1.453 - 1.630 Dia.	1590-2000	1.453 - 1.630 Dia.	7-5/8	3-1/2	3-7/8	3-1/2	4	5/8	4	5/8
CMCR-1811	2000-2500	1.630 - 1.823 Dia.	600-900	556-715	7-1/2	3-1/2	2-7/8	3-1/4	4	5/8	4	1/2
CMCR-1813	2000-2500	1.630 - 1.823 Dia.	715-1033	636-954	7-1/2	3-1/2	3	3-2/4	4	5/8	4	1/2
CMCR-1814	2000-2500	1.630 - 1.823 Dia.	954-1431	795-1272	7-3/4	3-1/2	3-1/4	3-1/2	4	5/8	4	1/2
CMCR-1816	2000-2500	1.630 - 1.823 Dia.	1272-1750	1113-1590	7-3/4	3-1/2	3-5/8	3-1/2	4	5/8	4	5/8
CMCR-1817	2000-2500	1.630 - 1.823 Dia.	1590-2000	1.453 - 1.630 Dia.	7-3/4	3-1/2	3-7/8	3-1/2	4	5/8	4	5/8
CMCR-1818	2000-2500	1.630 - 1.823 Dia.	2000-2500	1.630 - 1.823 Dia.	7-3/4	3-1/2	4	3-1/2	4	5/8	4	5/8

Example for Ordering: Royal CMCR-1414 Aluminum Tee Connector for 954-1431 MCM Aluminum or 795-1272 MCM ACSR Run and Tap.

ROYAL SWITCHGEAR MANUFACTURING CO.

3995 Pine Lane SE • Bessemer, AL 35023 • (205) 426-4090 • FAX (205) 426-4095