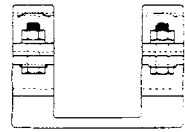


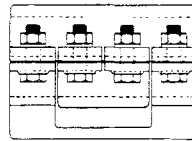
POWER CONNECTORS

BUS SUPPORT FITTINGS PICTORIAL INDEX

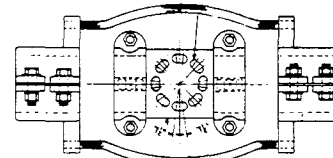
SECTION Fa



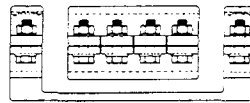
TYPE G (Page Fa-1)



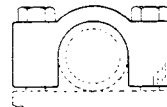
TYPE GC (Page Fa-2)



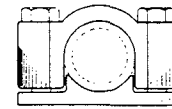
TYPE GCE (Page Fa-3)



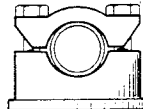
TYPE GCS (Page Fa-4)



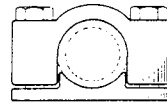
TYPE TC-31 & TC-51 (Page Fa-5)



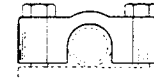
TYPE TR-31 & TR-51 (Page Fa-6)



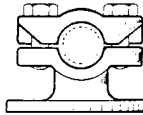
TYPE AP-3 & AP-5 (Page Fa-7)



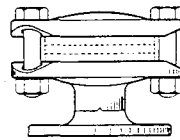
TYPE TC-32 & TC-52 (Page Fa-9)



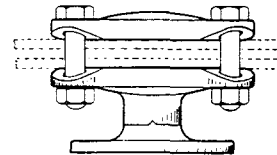
TYPE TR-32 & TR-52 (Page Fa-6)



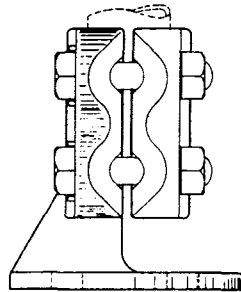
TYPE AT-3 & AT-5 (Page Fa-7)



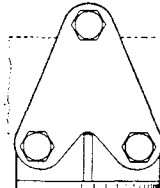
TYPE AFA-3 & AFA-5 (Page Fa-9)



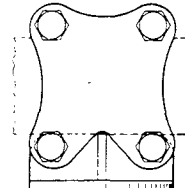
TYPE AFH-3 & AFH-5 (Page Fa-9)



TYPE VT-3 & VT-5 (Page Fa-8)



TYPE VFA-3 & VFA-5 (Page Fa-10)



TYPE VFH-3 & VFH-5 (Page Fa-10)

Fa-Bus Support

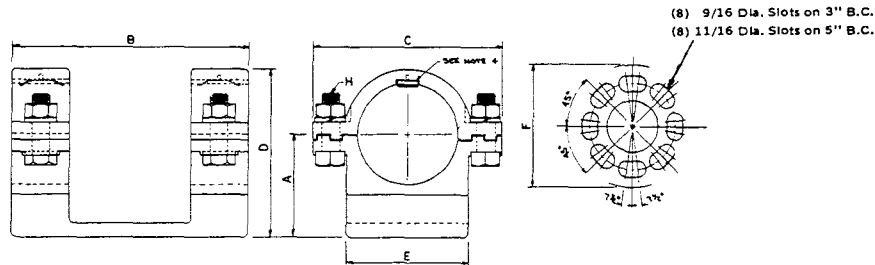
ROYAL SWITCHGEAR MANUFACTURING CO.

3995 Pine Lane SE • Bessemer, AL 35023 • (205) 426-4090 • FAX (205) 426-4095

POWER CONNECTORS **Fa-1**

BUS SUPPORT FITTING

TYPE G



3" BOLT CIRCLE

CAT. NO.	IPS	A	B	C	D	E	F	H
G-07-3	3/4	2	7-3/4	3-3/8	3	1-1/2	4-1/4	1/2
G-10-3	1	2	7-3/4	3-3/4	3-1/4	1-1/2	4-1/4	1/2
G-12-3	1-1/4	2-1/4	8-3/4	4-1/2	3-9/16	1-1/2	4-1/4	1/2
G-15-3	1-1/2	2-1/2	8-3/4	4-1/2	3-15/16	1-1/2	4-1/4	1/2
G-20-3	2	2-3/4	8-3/4	5	4-3/8	1-1/2	4-1/4	1/2
G-25-3	2-1/2	3-1/8	8-1/4	6-5/8	5-1/8	4-1/4	4-1/4	5/8
G-30-3	3	3-5/8	8-1/4	6-5/8	5-7/8	4-1/4	4-1/4	5/8
G-35-3	3-1/2	4	8-1/4	7-1/8	6-1/2	4-1/4	4-1/4	5/8
G-40-3	4	4-1/2	8-1/4	7-1/2	7-1/4	4-1/4	4-1/4	5/8
G-50-3	5	5	8-1/4	8-7/8	8-5/16	4-1/4	4-1/4	5/8
G-60-3	6	5-1/2	8-1/4	9-7/8	9-5/16	4-1/4	4-1/4	5/8

5" BOLT CIRCLE

CAT. NO.	IPS	A	B	C	D	E	F	H
G-07-5	3/4	2-1/4	10	3-3/8	3-1/4	1-1/2	6-1/4	1/2
G-10-5	1	2-1/4	10	3-3/4	3-1/2	1-1/2	6-1/4	1/2
G-12-5	1-1/4	2-3/8	11	4-1/2	3-11/16	1-1/2	6-1/4	1/2
G-15-5	1-1/2	2-1/2	11	4-1/2	3-15/16	1-1/2	6-1/4	1/2
G-20-5	2	2-3/4	11	5	4-3/8	1-1/2	6-1/4	1/2
G-25-5	2-1/2	3-1/8	10-3/4	6-5/8	5-1/8	4-1/4	6-1/4	5/8
G-30-5	3	3-5/8	10-3/4	6-5/8	5-7/8	4-1/4	6-1/4	5/8
G-35-5	3-1/2	4	10-3/4	7-1/8	6-1/2	4-1/4	6-1/4	5/8
G-40-5	4	4-1/2	10-3/4	7-1/2	7-1/4	4-1/4	6-1/4	5/8
G-50-5	5	5	10-3/4	8-7/8	8-5/16	4-1/4	6-1/4	5/8
G-60-5	6	5-1/2	10-3/4	9-7/8	9-5/16	4-1/4	6-1/4	5/8

RECOMMENDED TIGHTENING TORQUE

No. 2024 Alum. Bolts With Alumilite Finish & No-Oxide Coating

BOLT DIA.	FT. LB TORQUE
1/2	30
5/8	50

NOTES:

- Supplied with Cap Screws for Upright Mounting unless otherwise specified. (Galv.)
- For Base MTG on Cap and Pin Insulator add Suffix-B for Bolts, Nuts and Lockwashers. (Galv.) Example: G-10-3-B
- Caps are reversible for tight or slip fit.
- Anti-chatter Springs available by adding Suffix-AC. Example: G-10-3-AC
- One Wrench Installation.

ROYAL SWITCHGEAR MANUFACTURING CO.

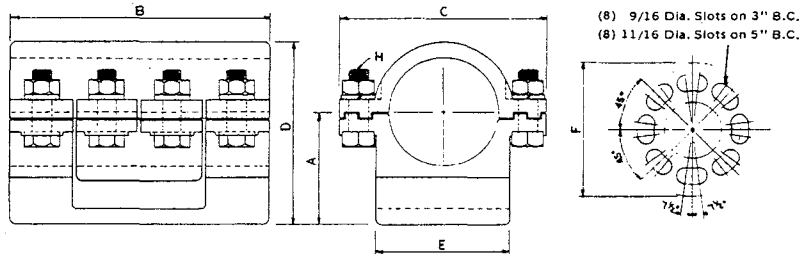
3995 Pine Lane SE • Bessemer, AL 35023 • (205) 426-4090 • FAX (205) 426-4095

Fa-Bus Support

Fa-2 POWER CONNECTORS

BUS SUPPORT COUPLER

TYPE GC



3" BOLT CIRCLE

CAT. NO.	IPS	A	B	C	D	E	F	H
GC-07-3	3/4	2	7-3/4	3-3/8	3	1-1/2	4-1/4	1/2
GC-10-3	1	2	7-3/4	3-3/4	3-1/4	1-1/2	4-1/4	1/2
GC-12-3	1-1/4	2-1/4	8-3/4	4-1/2	3-9/16	1-1/2	4-1/4	1/2
GC-15-3	1-1/2	2-1/2	8-3/4	4-1/2	3-15/16	1-1/2	4-1/4	1/2
GC-20-3	2	2-3/4	8-3/4	5	4-3/8	1-1/2	4-1/4	1/2
GC-25-3	2-1/2	3-1/8	8-1/4	6-5/8	5-1/8	4-1/4	4-1/4	5/8
GC-30-3	3	3-5/8	8-1/4	6-5/8	5-7/8	4-1/4	4-1/4	5/8
GC-35-3	3-1/2	4	8-1/4	7-1/8	6-1/2	4-1/4	4-1/4	5/8
GC-40-3	4	4-1/2	8-1/4	7-1/2	7-1/4	4-1/4	4-1/4	5/8
GC-50-3	5	5	12	8-7/8	8-5/16	4-1/4	4-1/4	5/8
GC-60-3	6	5-1/2	12	9-7/8	9-5/16	4-1/4	4-1/4	5/8

5" BOLT CIRCLE

CAT. NO.	IPS	A	B	C	D	E	F	H
GC-07-5	3/4	2-1/4	10	3-3/8	3-1/4	1-1/2	6-1/4	1/2
GC-10-5	1	2-1/4	10	3-3/4	3-1/2	1-1/2	6-1/4	1/2
GC-12-5	1-1/4	2-3/8	11	4-1/2	3-11/16	1-1/2	6-1/4	1/2
GC-15-5	1-1/2	2-1/2	11	4-1/2	3-15/16	1-1/2	6-1/4	1/2
GC-20-5	2	2-3/4	11	5	4-3/8	1-1/2	6-1/4	1/2
GC-25-5	2-1/2	3-1/8	10-3/4	6-5/8	5-1/8	4-1/4	6-1/4	5/8
GC-30-5	3	3-5/8	10-3/4	6-5/8	5-7/8	4-1/4	6-1/4	5/8
GC-35-5	3-1/2	4	10-3/4	7-1/8	6-1/2	4-1/4	6-1/4	5/8
GC-40-5	4	4-1/2	10-3/4	7-1/2	7-1/4	4-1/4	6-1/4	5/8
GC-50-5	5	5	14-1/2	8-7/8	8-5/16	4-1/4	6-1/4	5/8
GC-60-5	6	5-1/2	14-1/2	9-7/8	9-5/16	4-1/4	6-1/4	5/8

RECOMMENDED TIGHTENING TORQUE	
No. 2024 Alum. Bolts With Alumilite Finish & No-Oxide Coating	
BOLT DIA.	FT. LB TORQUE
1/2	30
5/8	50

NOTES:

- Supplied with Cap Screws for Upright Mounting unless otherwise specified. (Galv.)
- For Base Mounting on Cap and Pin Insulator add Suffix—B for Bolts, Nuts and Lockwashers.
Example: GC-10-3-B
- One Wrench Installation.

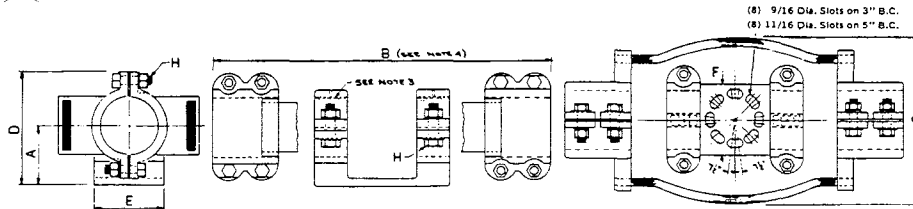
ROYAL SWITCHGEAR MANUFACTURING CO.

3995 Pine Lane SE • Bessemer, AL 35023 • (205) 426-4090 • FAX (205) 426-4095

POWER CONNECTORS **Fa-3**

EXPANSION BUS SUPPORT COUPLER

TYPE GCE



3" BOLT CIRCLE

CAT. NO.	IPS	A	B	C	D	E	F	H
GCE-07-3	3/4	2	18-1/4	6-7/8	3-3/4	1-1/2	4-1/4	1/2
GCE-10-3	1	2	18-1/4	7-1/8	3-7/8	1-1/2	4-1/4	1/2
GCE-12-3	1-1/4	2-1/4	20-1/4	7-5/8	4-3/8	1-1/2	4-1/4	1/2
GCE-15-3	1-1/2	2-1/2	20-1/4	8	4-3/4	1-1/2	4-1/4	1/2
GCE-20-3	2	2-3/4	20-1/4	8-1/2	5-1/4	1-1/2	4-1/4	1/2
GCE-25-3	2-1/2	3-1/8	20-1/2	10-1/2	5-7/8	4-1/4	4-1/4	5/8
GCE-30-3	3	3-5/8	20-1/2	10-1/2	6-3/8	4-1/4	4-1/4	5/8
GCE-35-3	3-1/2	4	20-1/2	11-1/4	7	4-1/4	4-1/4	5/8
GCE-40-3	4	4-1/2	20-1/2	12	7-5/8	4-1/4	4-1/4	5/8
GCE-50-3	5	5	20-1/2	13-1/4	8-7/8	4-1/4	4-1/4	5/8
GCE-60-3	6	5-1/2	20-1/2	15-1/4	9-7/8	4-1/4	4-1/4	5/8

5" BOLT CIRCLE

CAT. NO.	IPS	A	B	C	D	E	F	H
GCE-07-5	3/4	2-1/4	22-1/4	6-7/8	4	1-1/2	6-1/4	1/2
GCE-10-5	1	2-1/4	22-1/4	7-1/8	4-1/8	1-1/2	6-1/4	1/2
GCE-12-5	1-1/4	2-3/8	24-1/4	7-5/8	4-1/2	1-1/2	6-1/4	1/2
GCE-15-5	1-1/2	2-1/2	24-1/4	8	4-3/4	1-1/2	6-1/4	1/2
GCE-20-5	2	2-3/4	24-1/4	8-1/2	5-1/4	1-1/2	6-1/4	1/2
GCE-25-5	2-1/2	3-1/8	24-1/2	10-1/2	5-7/8	4-1/4	6-1/4	5/8
GCE-30-5	3	3-5/8	24-1/2	10-1/2	6-3/8	4-1/4	6-1/4	5/8
GCE-35-5	3-1/2	4	24-1/2	11-1/4	7	4-1/4	6-1/4	5/8
GCE-40-5	4	4-1/2	24-1/2	12	7-5/8	4-1/4	6-1/4	5/8
GCE-50-5	5	5	24-1/2	13-1/4	8-7/8	4-1/4	6-1/4	5/8
GCE-60-5	6	5-1/2	24-1/2	15-1/4	9-7/8	4-1/4	6-1/4	5/8

RECOMMENDED TIGHTENING TORQUE

No. 2024 Alum. Bolts With Alumilite
Finish & No-Oxide Coating

BOLT DIA.	FT. LB TORQUE
1/2	30
5/8	50

NOTES:

- Supplied with Cap Screws for Upright Mounting unless otherwise specified. (Galv.)
- For Base Mounting on Cap and Pin Insulator add Suffix-B for Bolts, Nuts and Lockwashers. **Example:** GCE-10-3-B
- Anti-chatter Springs available by adding Suffix-AC. **Example:** GCE-10-3-AC
- Dimension "B" is Mean Dimension for Installation.
- One Wrench Installation.

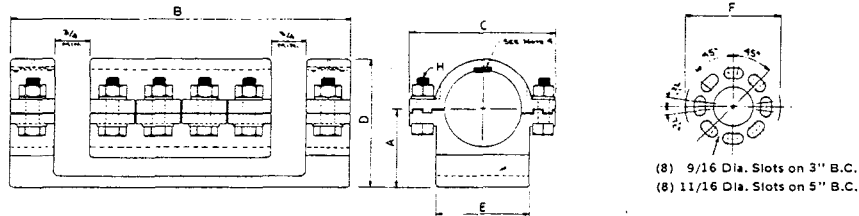
Fa-Bus Support

ROYAL SWITCHGEAR MANUFACTURING CO.

3995 Pine Lane SE • Bessemer, AL 35023 • (205) 426-4090 • FAX (205) 426-4095

Fa-4 POWER CONNECTORS

SLIDING BUS SUPPORT COUPLER TYPE GCS



3" BOLT CIRCLE

CAT. NO.	IPS	A	B	C	D	E	F	H
GCS-07-3	3/4	2	12-3/4	3-3/8	3	1-1/2	4-1/4	1/2
GCS-10-3	1	2	12-3/4	3-3/4	3-1/4	1-1/2	4-1/4	1/2
GCS-12-3	1-1/4	2-1/4	13-3/4	4-1/2	3-9/16	1-1/2	4-1/4	1/2
GCS-15-3	1-1/2	2-1/2	13-3/4	4-1/2	3-15/16	1-1/2	4-1/4	1/2
GCS-20-3	2	2-3/4	13-3/4	5	4-3/8	1-1/2	4-1/4	1/2
GCS-25-3	2-1/2	3-1/8	15-1/2	6-5/8	5-1/8	4-1/4	4-1/4	5/8
GCS-30-3	3	3-5/8	15-1/2	6-5/8	5-7/8	4-1/4	4-1/4	5/8
GCS-35-3	3-1/2	4	15-1/2	7-1/8	6-1/2	4-1/4	4-1/4	5/8
GCS-40-3	4	4-1/2	15-1/2	7-1/2	7-1/4	4-1/4	4-1/4	5/8
GCS-50-3	5	5	17-1/2	8-7/8	8-5/16	4-1/4	4-1/4	5/8
GCS-60-3	6	5-1/2	17-1/2	9-7/8	9-5/16	4-1/4	4-1/4	5/8

5" BOLT CIRCLE

CAT. NO.	IPS	A	B	C	D	E	F	H
GCS-07-5	3/4	2-1/4	15	3-3/8	3-1/4	1-1/2	6-1/4	1/2
GCS-10-5	1	2-1/4	15	3-3/4	3-1/2	1-1/2	6-1/4	1/2
GCS-12-5	1-1/4	2-3/8	16	4-1/2	3-11/16	1-1/2	6-1/4	1/2
GCS-15-5	1-1/2	2-1/2	16	4-1/2	3-15/16	1-1/2	6-1/4	1/2
GCS-20-5	2	2-3/4	16	5	4-3/8	1-1/2	6-1/4	1/2
GCS-25-5	2-1/2	3-1/8	18	6-5/8	5-1/8	4-1/4	6-1/4	5/8
GCS-30-5	3	3-5/8	18	6-5/8	5-7/8	4-1/4	6-1/4	5/8
GCS-35-5	3-1/2	4	18	7-1/8	6-1/2	4-1/4	6-1/4	5/8
GCS-40-5	4	4-1/2	18	7-1/2	7-1/4	4-1/4	6-1/4	5/8
GCS-50-5	5	5	20	8-7/8	8-5/16	4-1/4	6-1/4	5/8
GCS-60-5	6	5-1/2	20	9-7/8	9-5/16	4-1/4	6-1/4	5/8

RECOMMENDED TIGHTENING TORQUE

No. 2024 Alum. Bolts With Alumilite
Finish & No-Oxide Coating

BOLT DIA.	FT. LB TORQUE
1/2	30
5/8	50

NOTES:

- Supplied with Cap Screws for Upright Mounting unless otherwise specified. (Galv.)
- For Base Mounting on Cap and Pin Insulator add Suffix-B for Bolts, Nuts and Lockwashers.
Example: GCS-10-3-B
- Caps are reversible for Tight or Slip Fit.
- Anti-chatter Springs available by adding Suffix-AC. Example: GCS-10-3-AC
- One Wrench Installation.

ROYAL SWITCHGEAR MANUFACTURING CO.

3995 Pine Lane SE • Bessemer, AL 35023 • (205) 426-4090 • FAX (205) 426-4095

POWER CONNECTORS **Fa-5**

BUS SUPPORT FITTING

TYPES TC-31 & TC-51

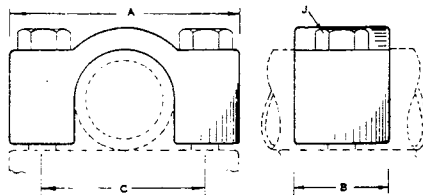


FIG. 1

CAT. NO.	COND. SIZE		FIG. NO.	BOLT SIZE	MAX. DIM. IN INCHES		
	TUBE	B.C.			J	A	B
TC-31							
54299	1/2	3"	1	1/2	4-1/4	1-3/4	3
54300	3/4	3"	1	1/2	4-1/4	1-3/4	3
54301	1	3"	1	1/2	4-1/4	1-3/4	3
54302	1-1/4	3"	1	1/2	4-1/4	1-3/4	3
54303	1-1/2	3"	1	1/2	4-1/4	1-3/4	3
TC-51							
54304	1/2	5"	1	5/8	6-1/4	1-3/4	5
54305	3/4	5"	1	5/8	6-1/4	1-3/4	5
54306	1	5"	1	5/8	6-1/4	1-3/4	5
54307	1-1/4	5"	1	5/8	6-1/4	1-3/4	5
54308	1-1/2	5"	1	5/8	6-1/4	1-3/4	5
54309	2	5"	1	5/8	6-1/4	1-3/4	5

Example for Ordering: No. 54309 Royal type TC-51 aluminum outdoor bus support fitting for 2" IPS aluminum pipe, 5" B.C.

TYPES TC-32 & TC-52

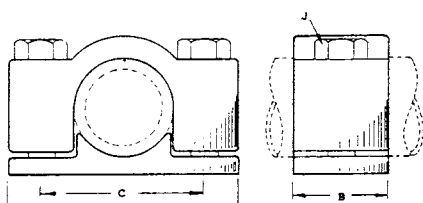


FIG. 1

CAT. NO.	COND. SIZE		FIG. NO.	BOLT SIZE	MAX. DIM. IN INCHES		
	TUBE	B.C.			J	A	B
TC-32							
54310	1/2	3"	1	1/2	4-1/4	1-3/4	3
54311	3/4	3"	1	1/2	4-1/4	1-3/4	3
54312	1	3"	1	1/2	4-1/4	1-3/4	3
54313	1-1/4	3"	1	1/2	4-1/4	1-3/4	3
54314	1-1/2	3"	1	1/2	4-1/4	1-3/4	3
TC-52							
57205	1/2	5"	1	5/8	6-1/4	1-3/4	5
54315	3/4	5"	1	5/8	6-1/4	1-3/4	5
54316	1	5"	1	5/8	6-1/4	1-3/4	5
54317	1-1/4	5"	1	5/8	6-1/4	1-3/4	5
54318	1-1/2	5"	1	5/8	6-1/4	1-3/4	5
54319	2	5"	1	5/8	6-1/4	1-3/4	5

Example for Ordering: No. 54313 Royal type TC-32 aluminum outdoor bus support fitting for 1-1/4 IPS aluminum pipe, 3" B.C.

Fa-Bus Support

ROYAL SWITCHGEAR MANUFACTURING CO.

3995 Pine Lane SE • Bessemer, AL 35023 • (205) 426-4090 • FAX (205) 426-4095

Fa-6 POWER CONNECTORS

BUS SUPPORT FITTING

TYPES TR-31 & TR-51

CAT. NO.	COND. SIZE		FIG. NO.	BOLT SIZE	MAX. DIM. IN INCHES			
	TUBE	B.C.			A	B	C	D
TR-31								
54320	1/2	3"	1	1/2	4-1/4	3-7/16	3	9/16
54321	3/4	3"	1	1/2	4-1/4	3-7/16	3	9/16
54322	1	3"	1	1/2	4-1/4	3-7/16	3	9/16
TR-51								
54818	1/2	5"	1	5/8	6-1/4	5	5	11/16
54325	3/4	5"	1	5/8	6-1/4	5	5	11/16
54326	1	5"	1	5/8	6-1/4	5	5	11/16
54327	1-1/4	5"	1	5/8	6-1/4	5	5	11/16
54328	1-1/2	5"	1	5/8	6-1/4	5	5	11/16

Example for Ordering: No. 54322 Royal type TR-31 aluminum outdoor bus support fitting for 1" IPS aluminum pipe, 3" B.C.

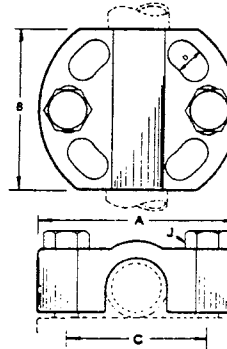


FIG. 1

TYPES TR-32 & TR-52

CAT. NO.	COND. SIZE		FIG. NO.	BOLT SIZE	MAX. DIM. IN INCHES			
	TUBE	B.C.			A	B	C	D
TR-32								
54342	1/2	3"	1	1/2	4-1/4	3-7/16	3	9/16
54330	3/4	3"	1	1/2	4-1/4	3-7/16	3	9/16
54331	1	3"	1	1/2	4-1/4	3-7/16	3	9/16
TR-52								
54352	1/2	5"	1	5/8	6-1/4	5	5	11/16
54335	3/4	5"	1	5/8	6-1/4	5	5	11/16
54336	1	5"	1	5/8	6-1/4	5	5	11/16
54337	1-1/4	5"	1	5/8	6-1/4	5	5	11/16
54338	1-1/2	5"	1	5/8	6-1/4	5	5	11/16

Example for Ordering: No. 54340 Royal type TR-52 aluminum outdoor bus support fitting for 2-1/2" IPS aluminum pipe, 5" B.C.

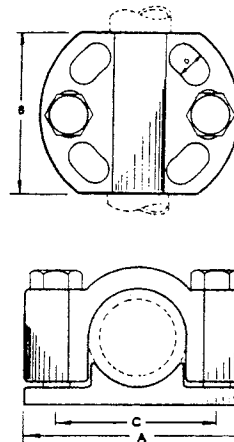


FIG. 1

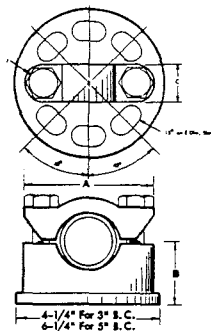
ROYAL SWITCHGEAR MANUFACTURING CO.

3995 Pine Lane SE • Bessemer, AL 35023 • (205) 426-4090 • FAX (205) 426-4095

POWER CONNECTORS Fa-7

BUS SUPPORT FITTING

TYPES AP-3 & AP-5

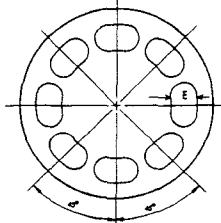


ADJUSTABLE FOR IPS ALUMINUM PIPE OR CABLE

CAT. NO.	COND. SIZE		FIG. NO.	BOLT SIZE J	MAX. DIM. IN INCHES			
	TUBE	CABLE			A	B	C	E
AP-3								
54343	1/2-1	1/0-1590	1	1/2	3-5/16	2	7/8	9/16
54344	1-1/4-1-1/2		1	1/2	4-1/8	2-3/8	7/8	9/16
54345	2		1	1/2	4-5/8	2-1/2	7/8	9/16
54346	2-1/2		1	1/2	5-1/8	3	7/8	9/16
AP-5								
54347	1/2-1	1/0-1590	1	1/2	3-5/16	2	1-3/4	11/16
54348	1-1/4-1-1/2		1	1/2	4-1/8	2-3/8	1-3/4	11/16
54349	2		1	1/2	4-5/8	2-1/2	1-3/4	11/16
54350	2-1/2		1	1/2	5-1/8	3	1-3/4	11/16
54351	3		1	1/2	5-3/4	3-1/4	1-3/4	11/16

Example for Ordering: No. 54344 Royal type AP-3 aluminum outdoor bus support fitting for 1-1/4" - 1-1/2" IPS aluminum pipe, 3" B.C.

NOTE: Cat. No. 54343 & 54347 have Reversible Caps for Conductor Range.

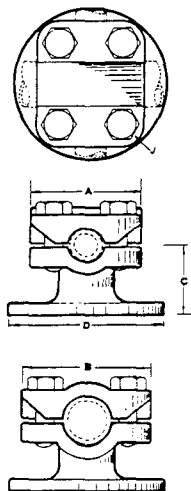


TYPES AT-3 & AT-5

ADJUSTABLE FOR IPS ALUMINUM PIPE OR CABLE

CAT. NO.	COND. SIZE		FIG. NO.	BOLT SIZE J	MAX. DIM. IN INCHES			
	TUBE	CABLE			A	B	C	D
AT-3								
54353	1/2-1	1/0-1590	1	1/2	3-1/8	3-3/8	2-1/2	4-1/4
54354	1-1/4-1-1/2		1	1/2	3-11/16	4	2-7/8	4-1/4
54355	1-1/2-2		1	1/2	4	4-1/2	3	4-1/4
54356	2-1/2-3		1	1/2	5	5-5/8	3-3/4	4-1/4
AT-5								
54357	1/2-1	1/0-1590	1	1/2	3-1/8	3-3/8	2-1/2	6-1/4
54358	1-1/4-1-1/2		1	1/2	3-11/16	4	2-7/8	6-1/4
54359	1-1/2-2		1	1/2	4	4-1/2	3	6-1/4
54360	2-1/2-3		1	1/2	5	5-5/8	3-3/4	6-1/4

Example for Ordering: No. 54353 Royal type AT-3 aluminum outdoor bus support fitting for 1/2" - 1" IPS aluminum pipe, 3" B.C.



Fa-Bus Support

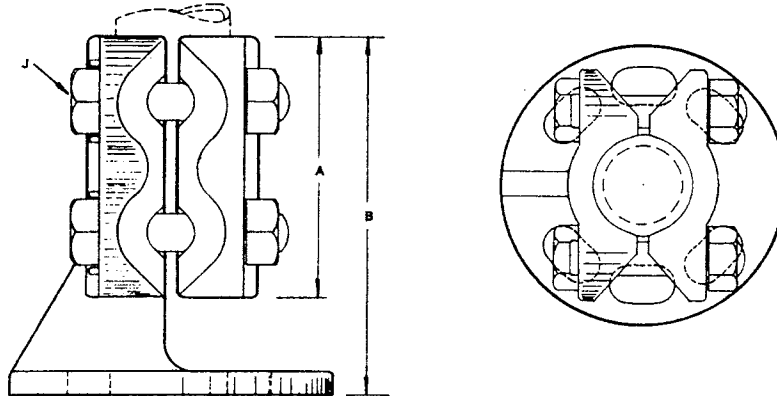
ROYAL SWITCHGEAR MANUFACTURING CO.

3995 Pine Lane SE • Bessemer, AL 35023 • (205) 426-4090 • FAX (205) 426-4095

Fa-8 POWER CONNECTORS

VERTICAL BUS SUPPORT FITTING

TYPES VT-3 & VT-5



VERTICAL IPS ALUMINUM PIPE

CAT. NO.		COND. SIZE TUBE	FIG. NO.	BOLT SIZE		MAX. DIM. IN INCHES	
VT-3	VT-5			J		A	B
54410	54422	3/4	1	1/2	3-1/2	4-3/4	
54411	54423	1	1	1/2	3-1/2	4-3/4	
54412	54424	1-1/4	1	1/2	3-1/2	4-3/4	
54413	54425	1-1/2	1	1/2	3-1/2	4-3/4	
54414	54426	2	1	5/8	3-1/2	4-3/4	
54415	54427	2-1/2	1	5/8	3-1/2	4-3/4	
54416	54428	3	1	5/8	3-1/2	4-3/4	
54417	54429	3-1/2	1	5/8	3-1/2	4-3/4	
54418	54430	4	1	3/4	4-1/2	5-3/4	
54420	54432	5	1	3/4	4-1/2	5-3/4	

Example for Ordering: No. 54414 Royal type VT-3 Aluminum bus support fitting for 2" IPS Aluminum pipe, 3" B.C.

Slotted holes in the base, a feature of all Royal bus support fittings, provide 15° of angular adjustment.

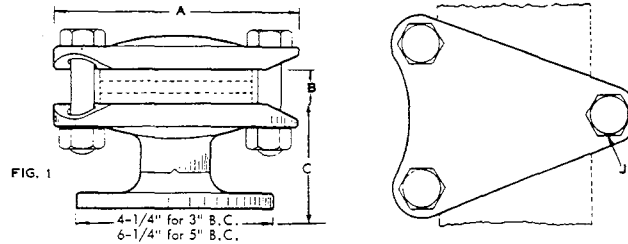
ROYAL SWITCHGEAR MANUFACTURING CO.

3995 Pine Lane SE • Bessemer, AL 35023 • (205) 426-4090 • FAX (205) 426-4095

POWER CONNECTORS **Fa-9**

BUS SUPPORT FITTING

TYPES AFA-3 & AFA-5



ALUMINUM BUS BAR CLAMPS

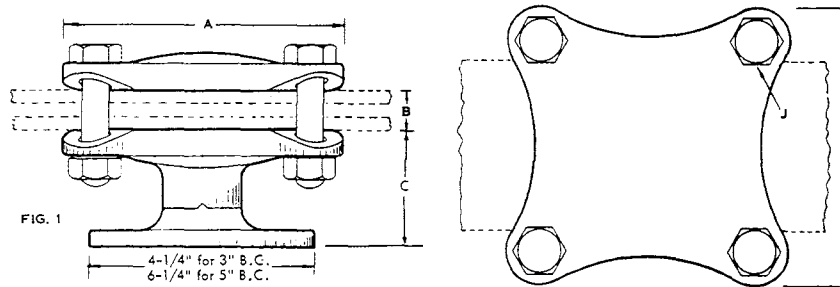
CAT. NO.		COND. SIZE BAR	FIG. NO.	BOLT SIZE J	MAX. DIM. IN INCHES		
AFA-3	AFA-5				A	B	C
54611	54616	2	1	1/2	4	SPECIFY	3
54612	54617	3	1	1/2	5		3
54613	54618	4	1	5/8	6-3/4		3-1/2
54614	54619	5	1	5/8	7-3/4		3-1/2
54615	54620	6	1	5/8	8-3/4		3-1/2

Example for Ordering: No. 54614 Royal type AFA-3 Aluminum bus support fitting for (2) 3/8"x5" Aluminum bars, 1-1/8" opening, 3" B.C.

NOTE: Specify clamp opening or number of bars and spacing.

Slotted holes in the base, a feature of all Royal bus support fittings, provide 15° of angular adjustment.

TYPES AFH-3 & AFH-5



ALUMINUM BUS BAR CLAMPS

CAT. NO.		COND. SIZE BAR	FIG. NO.	BOLT SIZE J	MAX. DIM. IN INCHES		
AFH-3	AFH-5				A	B	C
54621	54626	2	1	1/2	4	SPECIFY	3
54622	54627	3	1	1/2	5		3
54623	54628	4	1	5/8	6-3/4		3-1/2
54624	54629	5	1	5/8	7-3/4		3-1/2
54625	54630	6	1	5/8	8-3/4		3-1/2

Example for Ordering: No. 54630 Royal type AFH-5 Aluminum bus support fitting for (3) 1/2"x6" Aluminum bars, 2-1/2" opening, 5" B.C.

Slotted holes in the base, a feature of all Royal bus support fittings, provide 15° of angular adjustment.

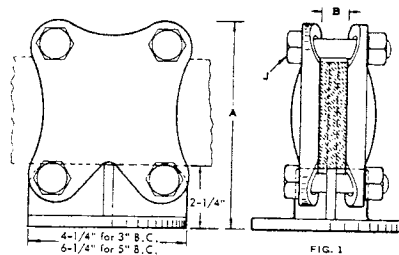
ROYAL SWITCHGEAR MANUFACTURING CO.

3995 Pine Lane SE • Bessemer, AL 35023 • (205) 426-4090 • FAX (205) 426-4095

Fa-10 POWER CONNECTORS

BUS SUPPORT FITTING

TYPES VFA-3 & VFA-5

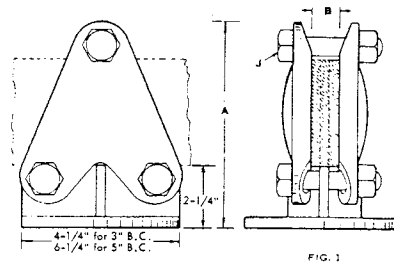


ALUMINUM BUS BAR CLAMPS

CAT. NO.		COND. SIZE BAR	FIG. NO.	BOLT SIZE J	MAX. DIM. IN INCHES	
VFA-3	VFA-5				A	B
54631	54636	2	1	1/2	4-5/8	SPECIFY
54632	54637	3	1	1/2	5-5/8	
54633	54638	4	1	5/8	7-3/8	
54634	54639	5	1	5/8	8-3/8	
54635	54640	6	1	5/8	9-3/8	

Example for Ordering: No. 54633 Royal type VFA-3 Aluminum bus support fitting for (3) 1/2"x4" Aluminum bar, 2-1/2" opening, 3" B.C. Slotted holes in the base, a feature of all Royal bus support fittings, provide 15° of angular adjustment.

TYPES VFH-3 & VFH-5



ALUMINUM BUS BAR CLAMPS

CAT. NO.		COND. SIZE BAR	FIG. NO.	BOLT SIZE J	MAX. DIM. IN INCHES	
VFH-3	VFH-5				A	B
54641	54646	2	1	1/2	4-5/8	SPECIFY
54642	54647	3	1	1/2	5-5/8	
54643	54648	4	1	5/8	7-3/8	
54644	54649	5	1	5/8	8-3/8	
54645	54650	6	1	5/8	9-3/8	

Example for Ordering: No. 54649 Royal type VFH-5 Aluminum bus support fitting for (2) 1/2"x5" Aluminum bars, 1-1/2" opening, 5" B.C.

Slotted holes in the base, a feature of all Royal bus support fittings, provide 15° of angular adjustment.

ROYAL SWITCHGEAR MANUFACTURING CO.

3995 Pine Lane SE • Bessemer, AL 35023 • (205) 426-4090 • FAX (205) 426-4095