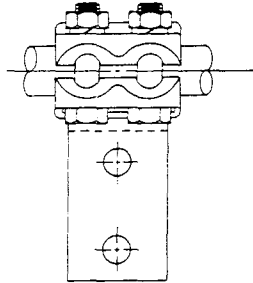


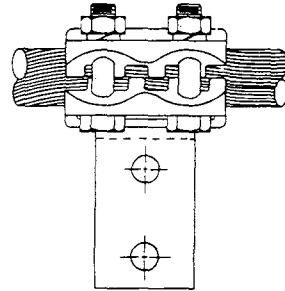
POWER CONNECTORS

BAR CONNECTORS PICTORIAL INDEX

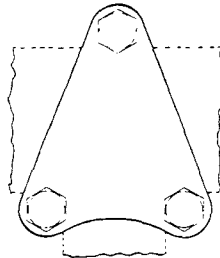
SECTION Ca



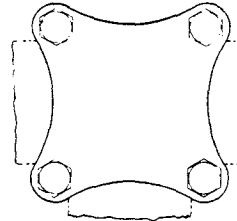
TYPE TMF (Page Ca-1)



TYPE CMFR (Page Ca-2)



TYPE FA (Page Ca-3)



TYPE FH (Page Ca-4)

Ca-Bar Conn

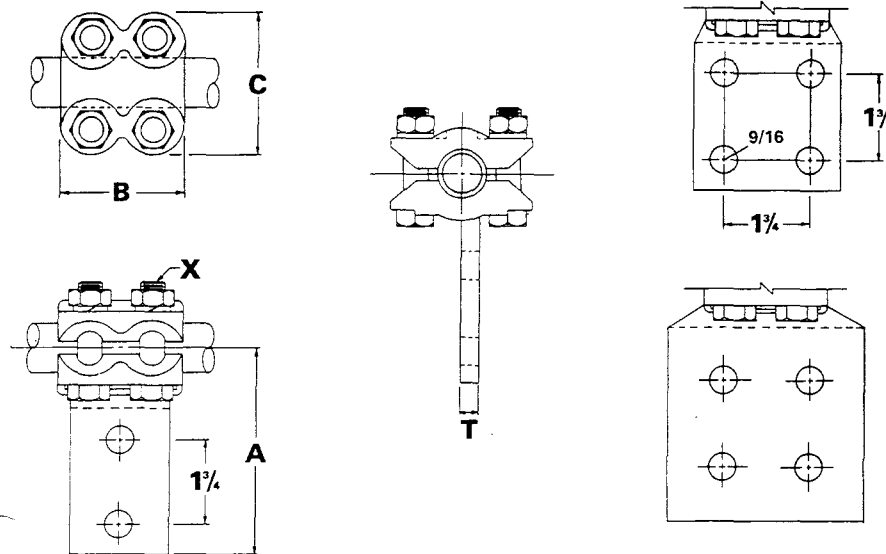
ROYAL SWITCHGEAR MANUFACTURING CO.

3995 Pine Lane SE • Bessemer, AL 35023 • (205) 426-4090 • FAX (205) 426-4095

POWER CONNECTORS **Ca-1**

BAR CONNECTOR

TYPE TMF



CAT. NO.	IPS SIZE	PAD SIZE	DIMENSIONS IN INCHES				X	
			A	B	C	T	NO.	SIZE
TMF-07-2N	3/4	2 x 3-1/4	4-7/16	2-1/2	2-7/8	3/8	4	1/2
TMF-07-3N	3/4	3 x 3-1/4	4-7/16	2-1/2	2-7/8	3/8	4	1/2
TMF-10-2N	1	2 x 3-1/4	4-9/16	2-1/2	3-3/8	7/16	4	1/2
TMF-10-3N	1	3 x 3-1/4	4-9/16	2-1/2	3-3/8	3/8	4	1/2
TMF-12-2N	1-1/4	2 x 3-1/4	4-3/4	3	3-3/4	5/8	4	1/2
TMF-12-3N	1-1/4	3 x 3-1/4	4-3/4	3	3-3/4	1/2	4	1/2
TMF-15-2N	1-1/2	2 x 3-1/4	4-7/8	3	4	3/4	4	1/2
TMF-15-3N	1-1/2	3 x 3-1/4	4-7/8	3	4	1/2	4	1/2
TMF-20-2N	2	2 x 3-1/4	5-3/16	3	4-1/2	7/8	4	1/2
TMF-20-3N	2	3 x 3-1/4	5-3/16	3	4-1/2	5/8	4	1/2
TMF-20-4N	2	4 x 4-1/4	6-3/16	3	4-1/2	1/2	4	1/2
TMF-25-3N	2-1/2	3 x 3-1/4	5-7/16	3	5	7/8	4	1/2
TMF-25-4N	2-1/2	4 x 4-1/4	6-7/16	3	5	5/8	4	1/2
TMF-30-3N	3	3 x 3-1/4	5-13/16	3-1/2	6	1	4	5/8
TMF-30-4N	3	4 x 4-1/4	6-13/16	3-1/2	6	3/4	4	5/8
TMF-35-3N	3-1/2	3 x 3-1/4	6-1/16	4	6-3/4	1-1/4	4	5/8
TMF-35-4N	3-1/2	4 x 4-1/4	7-1/16	4	6-3/4	7/8	4	5/8
TMF-40-3N	4	3 x 3-1/4	6-3/8	4	7-1/4	1-1/4	4	5/8
TMF-40-4N	4	4 x 4-1/4	7-3/8	4	7-1/4	1	4	5/8
TMF-50-4N	5	4 x 4-1/4	7-7/8	5-1/4	8-1/2	1-1/4	6	5/8
TMF-60-4N	6	4 x 4-1/4	8-7/16	5-1/4	9-5/8	1-1/2	6	5/8

Example for Ordering: Royal TMF-15-3N Aluminum Bar Connector for 1-1/2" IPS Aluminum Tubing to 3"x3-1/4" NEMA 4 hole pad.

Ca-Bar Conn

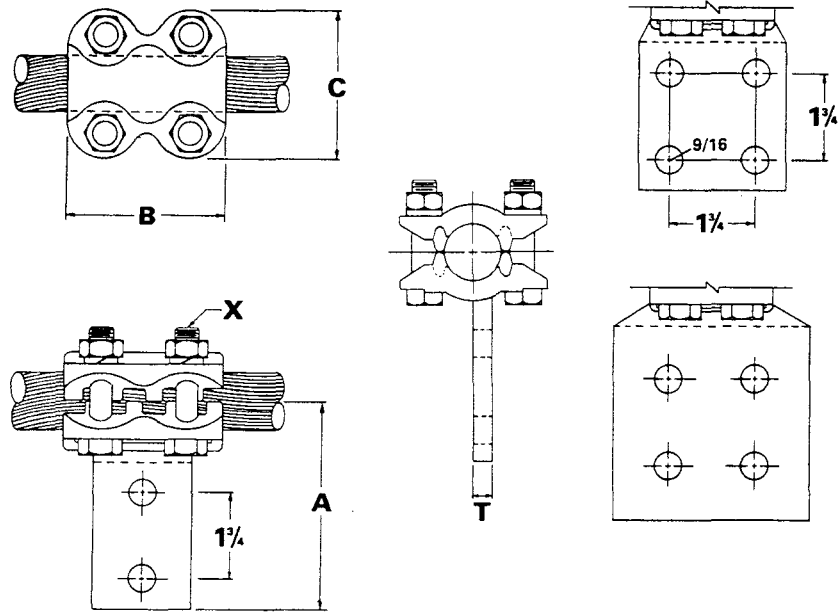
ROYAL SWITCHGEAR MANUFACTURING CO.

3995 Pine Lane SE • Bessemer, AL 35023 • (205) 426-4090 • FAX (205) 426-4095

Ca-2 POWER CONNECTORS

BAR CONNECTOR

TYPE CMFR



CAT. NO.	CONDUCTOR SIZE		PAD SIZE	DIMENSIONS IN INCHES						
	ALUM	ACSR		A	B	C	T	X NO.	X SIZE	
CMFR-06-2N	6-250	6-4/0	2 x 3-1/4	4-1/4	2-1/2	2-1/4	3/8	4	1/2	
CMFR-06-3N	6-250	6-4/0	3 x 3-1/4	4-1/4	2-1/2	2-1/4	3/8	4	1/2	
CMFR-08-2N	250-400	4/0-336	2 x 3-1/4	4-5/16	2-1/2	2-1/2	3/8	4	1/2	
CMFR-08-3N	250-400	4/0-336	3 x 3-1/4	4-5/16	2-1/2	2-1/2	3/8	4	1/2	
CMFR-09-2N	350-600	336-477	2 x 3-1/4	4-7/16	3-1/4	2-5/8	3/8	4	1/2	
CMFR-09-3N	350-600	336-477	3 x 3-1/4	4-7/16	3-1/4	2-5/8	3/8	4	1/2	
CMFR-11-2N	600-900	556-715	2 x 3-1/4	4-1/2	3-1/4	2-7/8	7/16	4	1/2	
CMFR-11-3N	600-900	556-715	3 x 3-1/4	4-1/2	3-1/4	2-7/8	3/8	4	1/2	
CMFR-13-2N	715-1033	636-954	2 x 3-1/4	4-5/8	3-1/4	3	7/16	4	1/2	
CMFR-13-3N	715-1033	636-954	3 x 3-1/4	4-5/8	3-1/4	3	7/16	4	1/2	
CMFR-13-4N	715-1033	636-954	4 x 4-1/4	5-5/8	3-1/4	3	3/8	4	1/2	
CMFR-14-3N	954-1431	795-1272	3 x 3-1/4	4-3/4	3-1/2	3-1/4	1/2	4	1/2	
CMFR-14-4N	954-1431	795-1272	4 x 4-1/4	5-3/4	3-1/2	3-1/4	3/8	4	1/2	
CMFR-16-3N	1272-1750	1113-1590	3 x 3-1/4	4-7/8	3-1/2	3-5/8	9/16	4	5/8	
CMFR-16-4N	1272-1750	1113-1590	4 x 4-1/4	5-7/8	3-1/2	3-5/8	7/16	4	5/8	
CMFR-17-3N	1590-2000	1.453-1.630 Dia.	3 x 3-1/4	5	3-1/2	3-7/8	9/16	4	5/8	
CMFR-17-4N	1590-2000	1.453-1.630 Dia.	4 x 4-1/4	6	3-1/2	3-7/8	7/16	4	5/8	
CMFR-18-3N	2000-2500	1.630-1.823 Dia.	3 x 3-1/4	5-1/16	3-1/2	4	5/8	4	5/8	
CMFR-18-4N	2000-2500	1.630-1.823 Dia.	4 x 4-1/4	6-1/16	3-1/2	4	1/2	4	5/8	

Example for Ordering: Royal CMFR-16-4N Aluminum Bar Connector for 1272-1750 MCM Aluminum or 1113-1590 MCM ACSR to 4"x4-1/4" NEMA 4 hole pad.

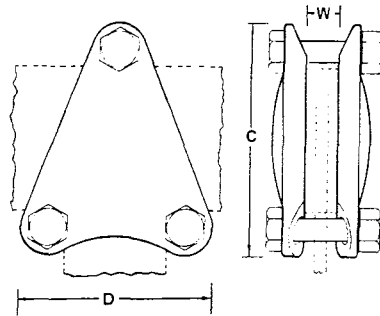
ROYAL SWITCHGEAR MANUFACTURING CO.

3995 Pine Lane SE • Bessemer, AL 35023 • (205) 426-4090 • FAX (205) 426-4095

POWER CONNECTORS **Ca-3**

BAR TAP CLAMP

TYPE FA



ALUMINUM BUS BAR RUN AND TAP

CAT. NO. FA	COND. SIZE		BOLT SIZE (inches)	MAX. DIM. IN INCHES	
	BAR RUN (inches)	BAR TAP (inches)		C	D
	FA2020	2		2	1/2
FA3020	3	2	1/2	5	4
FA3030	3	3	1/2	5	5
FA4020	4	2	1/2	6	4
FA4030	4	3	5/8	6	5-3/4
FA4040	4	4	5/8	6-3/4	6-3/4
FA5020	5	2	5/8	7-3/4	4-3/4
FA5030	5	3	5/8	7-3/4	5-3/4
FA5040	5	4	5/8	7-3/4	6-3/4
FA5050	5	5	5/8	7-3/4	7-3/4
FA6020	6	2	5/8	8-3/4	4-3/4
FA6030	6	3	5/8	8-3/4	5-3/4
FA6040	6	4	5/8	8-3/4	6-3/4
FA6050	6	5	5/8	8-3/4	7-3/4
FA6060	6	6	5/8	8-3/4	8-3/4

Example for Ordering: Royal FA3020 Aluminum Bar Tap Clamp for 3" bar run - 2" bar tap.

NOTE: Specify (W) width of clamp opening. The FA clamp is a standard duty clamp which may be used as a coupler or tee connector.

Ca-Bar Conn

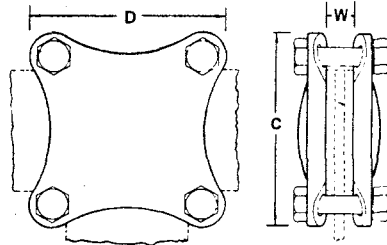
ROYAL SWITCHGEAR MANUFACTURING CO.

3995 Pine Lane SE • Bessemer, AL 35023 • (205) 426-4090 • FAX (205) 426-4095

Ca-4 POWER CONNECTORS

BAR TAP CLAMP

TYPE FH



ALUMINUM BUS BAR RUN AND TAP

CAT. NO. FH	COND. SIZE		BOLT SIZE (inches)	MAX. DIM. IN INCHES	
	BAR RUN	BAR TAP		C	D
	(inches)				
FH2020	2	2	1/2	4	4
FH3020	3	2	1/2	5	4
FH3030	3	3	1/2	5	5
FH4020	4	2	1/2	6	4
FH4030	4	3	5/8	6	5-3/4
FH4040	4	4	5/8	6-3/4	6-3/4
FH5020	5	2	5/8	7-3/4	4-3/4
FH5030	5	3	5/8	7-3/4	5-3/4
FH5040	5	4	5/8	7-3/4	6-3/4
FH5050	5	5	5/8	7-3/4	7-3/4
FH6020	6	2	5/8	8-3/4	4-3/4
FH6030	6	3	5/8	8-3/4	5-3/4
FH6040	6	4	5/8	8-3/4	6-3/4
FH6050	6	5	5/8	8-3/4	7-3/4
FH6060	6	6	5/8	8-3/4	8-3/4

Example for Ordering: Royal FH4040 Aluminum Bar Tap Clamp for 4" bar run - 4" bar tap.

NOTE: Specify width of clamp opening. The FH clamp is a heavy duty clamp which may be used as a coupler or tee connector.

ROYAL SWITCHGEAR MANUFACTURING CO.

3995 Pine Lane SE • Bessemer, AL 35023 • (205) 426-4090 • FAX (205) 426-4095